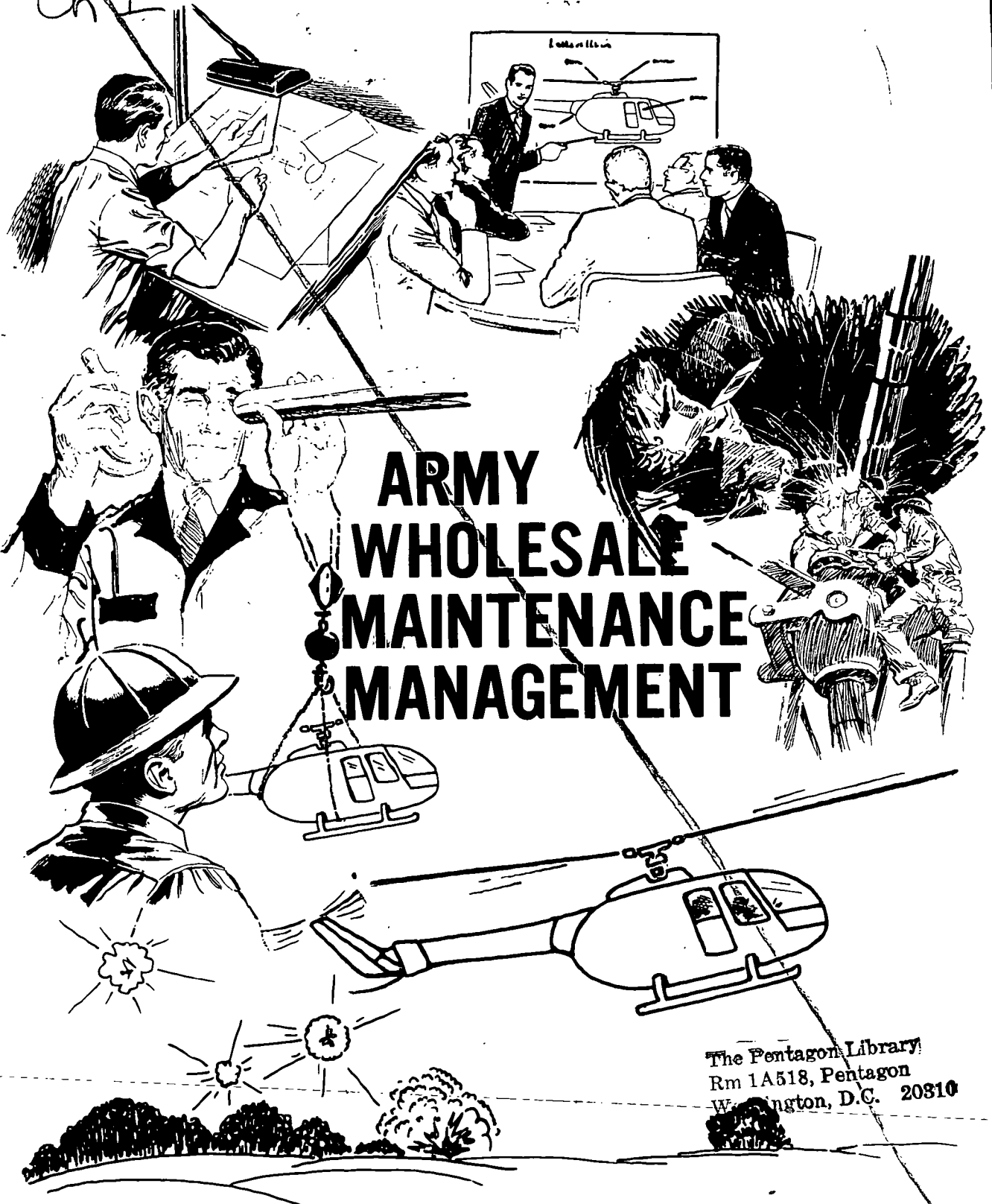


FM 750-80 S/S FM 750-80; AUG 1987
SEP 1983

REFERENCE

FM 750-80

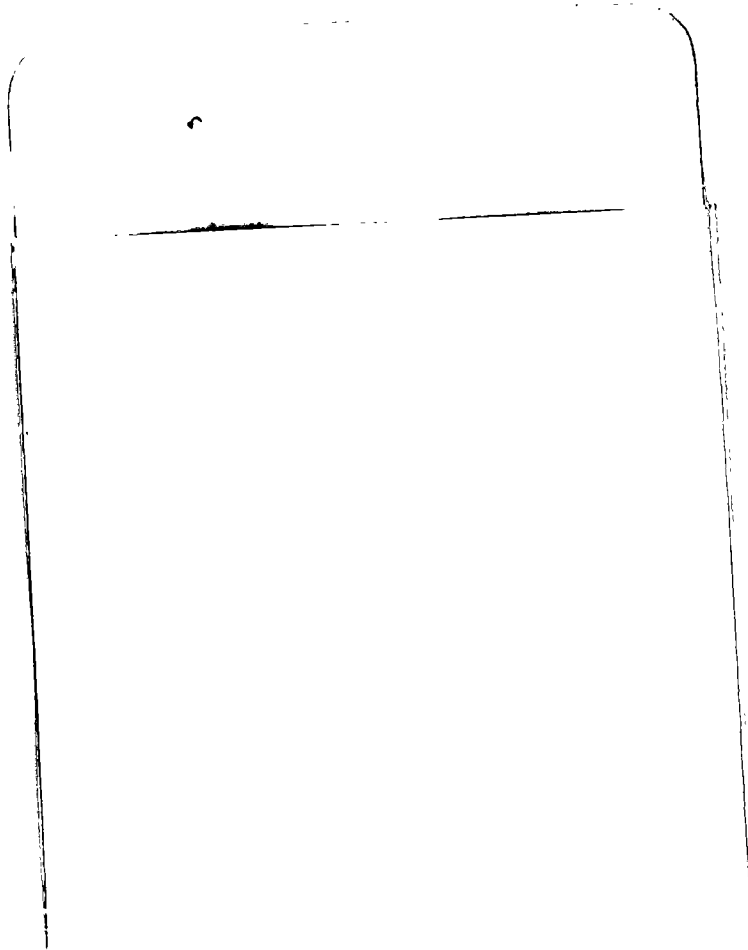
ch 2



ARMY WHOLESALE MAINTENANCE MANAGEMENT

The Pentagon Library,
Rm 1A518, Pentagon
Washington, D.C. 20310

SEPTEMBER 1983



CHANGE }
 No. 1 }

HEADQUARTERS
 DEPARTMENT OF THE ARMY
 WASHINGTON, DC, 1 August 1985

ARMY WHOLESALE MAINTENANCE MANAGEMENT

This change reflects current doctrine and organizational structure FM 750-80, 1 September 1983, is changed as follows:

1. New or changed material is indicated by a star.
2. Wherever the words, "the U.S. Army Materiel Development and Readiness Command (DARCOM)" appear, the new wording is, "the U.S. Army Materiel Command (AMC)."
3. Remove old pages and insert new pages as indicated below.

<u>Remove Pages</u>	<u>Insert Pages</u>
i	i
1-1 through 1-7	1-1 through 1-6
2-5 and 2-6	2-5 and 2-6
4-3 through 4-10	4-3 through 4-9
A-1 through A-3	A-1 through A-3
B-1 and B-2	B-1 and B-2

*Posted
 8 Oct 85
 [Signature]*

4. File this transmittal sheet in front of the publication.

By Order of the Secretary of the Army

JOHN A. WICKHAM, JR.
*General, United States Army
 Chief of Staff*

Official:

DONALD J. DELANDRO
*Brigadier General, United States Army
 The Adjutant General*

Distribution: To be distributed in accordance with DA Form 12-11A, requirements for FM 750-80: Army Wholesale Maintenance Management; Logistics Maintenance Management.

The Pentagon Library
 Rm 1A518, Pentagon
 Washington, D.C. 20310

FIELD MANUAL }
 No. 750-80 }

HEADQUARTERS
 DEPARTMENT OF THE ARMY
 WASHINGTON, DC, 1 September 1983

ARMY WHOLESALE MAINTENANCE MANAGEMENT

Effective support of our fighting forces requires a coordinated maintenance system. Neither the wholesale nor retail communities can provide support in isolation from the other. This manual illustrates wholesale maintenance and the wholesale/retail interface.

	Paragraph	Page
*CHAPTER 1. INTRODUCTION		
Purpose and Scope	1-1	1-1
Recommended Changes	1-2	1-1
Explanation of Terms	1-3	1-2
The Wholesale Maintenance Mission	1-4	1-4
Organization for Wholesale Maintenance Management	1-5	1-4
2. PLANNING FOR WHOLESALE MAINTENANCE SUPPORT		
General	2-1	2-1
Industrial Preparedness	2-2	2-1
Depot Maintenance Mobilization Plans	2-3	2-2
Interservice Support	2-4	2-2
Host Nation Support	2-5	2-3
Contract Maintenance	2-6	2-3
Automation	2-7	2-4
*Supply Relationships	2-8	2-5
3. MAINTENANCE ENGINEERING		
Maintenance Engineering During Development ...	3-1	3-1
Materiel Fielding	3-2	3-4
Maintenance Engineering After System Deployment	3-3	3-6
Performance Data	3-4	3-7
Equipment Improvement Recommendations (EIR) .	3-5	3-7
Logistics Assistance	3-6	3-8
4. WHOLESALE MAINTENANCE OPERATIONS		
General	4-1	4-1
Depot Maintenance Operations	4-2	4-1
Elements of Depot Maintenance	4-3	4-1
*Organic Facilities	4-4	4-2
Contractor Facilities	4-5	4-4
*Depot Maintenance Performed	4-6	4-4
*Wholesale Maintenance in the Theater of Operations	4-7	4-5
*APPENDIX A REFERENCES		A-1
*APPENDIX B ACRONYMS		B-1
INDEX		Index-1

CHAPTER 1

INTRODUCTION

1-1. Purpose and Scope

a. The purpose of this manual is to establish wholesale materiel maintenance management doctrine. Army Regulation (AR) 700-9, Policies of the Army Logistics System, 15 October 1981, defines logistics doctrine as, "A collection of the best thinking the Army has to offer on how to perform a particular combat service support in wartime." Consequently, the intent of this publication is to provide information about wholesale maintenance which will be useful in planning for and providing support in time of war. Commanders, staff officers, logisticians, and nonlogisticians alike need to know how wholesale maintenance supports the Army's combat strength. Not only is this knowledge applicable to the Active Army, but it is equally applicable to the Army National Guard and the Army Reserve. This doctrine is for use in war and contingency planning, logistics planning, and force modernization, as well as in improving everyday operations.

THIS MANUAL PROVIDES THE DOCTRINE FOR LOGISTICIANS TO PLAN TO OPERATE IN WAR JUST AS WE DO IN PEACE.

1-2. Recommended Changes

a. Since changes in doctrine are continually occurring, users of this field manual are encouraged to make comments and recommend changes which will improve the technical quality of this document.

b. When changes are recommended, all comments should be directed to the specific page, paragraph, and line of the text. To ensure understanding and accurate evaluation, it is requested that reasons for a change be provided for each comment. Comments should be submitted on DA Form 2028 (Recommended Changes to Publications and Blank Forms) and forwarded directly to the Commandant, United States Army Logistics Management Center (ALMC), ATTN: AMXMC-MR-MM, Fort Lee, Virginia 23801-6040.

**MAINTENANCE IS:
SUSTAINING
RESTORING
UPGRADING**

**MAINTENANCE OPERATIONS =
PERFORMANCE
INSPECTION
TESTING
SERVICING
CLASSIFICATION
RECLAMATION
REPAIR
OVERHAUL
REBUILD
MODIFICATION
CONVERSION
CALIBRATION
RENOVATION**

***1-3. Explanation of Terms**

a. Materiel maintenance is the function of sustaining materiel in an operational status, restoring it to a serviceable condition, or updating and upgrading its functional usefulness through modification and product improvement. The maintenance function includes varied types of activities performed by many different organizational elements. The ultimate goal of these organizations is to create and sustain combat readiness in the Army. Because maintenance activities are so diverse, they can be categorized in many different ways. A basic method of identifying maintenance is to divide it into two subfunctions: maintenance engineering and maintenance operations.

b. Maintenance engineering is that activity of materiel maintenance which develops concepts, criteria, and technical requirements during the materiel acquisition process. After acquisition, maintenance engineering activities continue to ensure timely, effective, and economical maintenance support.

**c.* Maintenance operations constitute the actual physical performance of maintenance and the management of such performance. Maintenance operations are generally divided into four levels. These are organizational, direct support (DS), general support (GS), and depot, as addressed in AR 750-1, Army Materiel Maintenance Concepts and Policies. These levels of maintenance identify the scope of the operation which may be performed at various command levels. The responsibility for the performance at a given level is assigned to a unit in consonance with its primary mission, degree of mobility, intended availability of personnel, skills, and materiel resources. The collective objective of this level is to restore materiel to a state of serviceability.

**(1)* Unit maintenance is the preventive and corrective maintenance performed by a using unit on its own equipment.

* (2) Intermediate direct support maintenance units provide DS to the user by repairing and returning materiel directly to the user and repair of high usage components for Direct Exchange (DX).

* (3) Intermediate general support maintenance units perform those maintenance actions required to support a force as a whole, rather than specific elements. Intermediate (GS) maintenance units are normally located at echelon above corps and perform maintenance in support of the theater supply system through the repair of assemblies, components, and modules, DX items, printed circuit boards (PCB), and operational readiness float (ORF).

* (4) Depot maintenance is the highest level of maintenance, performing those tasks which cannot be performed at a lower level. It is performed in fixed facilities in Continental United States (CONUS) and the theater of operations (TO), and is production line oriented.

(5) An exception to the above is aviation maintenance. The three levels of aviation maintenance are aviation unit maintenance (AVUM), aviation intermediate maintenance (AVIM), and aviation depot maintenance.

*d. Retail maintenance is the maintenance activity performed at the intermediate, direct and general support, and unit levels of maintenance, both in the CONUS and overseas. This activity may be in support of contingency operations, an established theater of operations, a deployable unit or command.

e. Wholesale maintenance is that maintenance activity which is performed above the retail level. The depot level of maintenance provides wholesale maintenance operations. The Army Materiel Command (AMC) is responsible for managing wholesale maintenance management. Its headquarters directs the activities of depots, arsenals, and test facilities used in wholesale maintenance. The major subordinate commands (MSCs) develop, procure, distribute and support Army systems. Organizations outside AMC have wholesale maintenance responsibility for some specialized commodities.

DSU = REPAIR & RETURN TO USER

GSU = REPAIR & RETURN TO SUPPLY SYSTEM

**RETAIL MAINTENANCE:
ORGANIZATIONAL
DS
GS**

**WHOLESALE MAINTENANCE:
MAINTENANCE ENGINEERING
DEPOT OPERATIONS**

1-4. The Wholesale Maintenance Mission

Wholesale maintenance has but one purpose—to sustain combat readiness of U.S. and Allied forces. This purpose is achieved by:

- Providing a system for the maintenance of Army materiel systems.
- Determining where, when, how, why, and by whom maintenance actions must be taken.
- Using maintenance data during system development to lessen the maintenance requirement and after system fielding to improve maintenance performance.
- Conducting depot maintenance.
- Providing maintenance assistance to retail maintenance organizations.

Wholesale maintenance responsibilities are consolidated to take advantage of centralized management, which results in an efficiency of operations not possible otherwise.

*1-5. Organization for Wholesale Maintenance Management

Army wholesale maintenance addresses the Army maintenance system above the retail level. Wholesale maintenance responsibility resides within such Army agencies as:

- The Surgeon General
- The Chief of Engineers
- DA Deputy Chief of Staff for Logistics (DCSLOG)
- U.S. Army Materiel Command (AMC)

**a. The Army Materiel Command (AMC).* The AMC is a major Army command (MACOM). It has materiel life-cycle responsibility. Functions of AMC include formulating the materiel portions of the DA program and executing approved programs; providing integrated commodity management comprising:

- Research, development, and modification.
- Developmental testing and evaluation.
- Maintenance support planning, including personnel, training, manuals, repair parts, tools, test equipment, and modifications or product improvements.
- Technical and engineering supervision and services, including technical advisory service, product engineering, production engineering, maintenance engineering, and human factors engineering.
- Army provisioning technical and functional policy and implementation for initial and follow-on support.
- Product assurance.
- Value engineering.

- Procurement and production.
- Integrated materiel inventory management.
- Materiel and industrial mobilization planning, contingency planning, and maintenance of mobilization reserves and production base.
- Management of the DA equipment publications program and preparation or acquisition of equipment publications.
- Technical direction and management of the depot maintenance programs.
- Transportation, transportability, and transportation engineering.
- Development of and recommendation to Headquarters, Department of the Army (HQDA) new and improved concepts, doctrine systems, and procedures for wholesale logistics operations.
- Management and control of working capital funds.
- Development of automated wholesale logistics systems that interface with Army and other retail logistics systems as well as other DOD wholesale systems.
- Conduct of specialized training of personnel in the materiel area, to include new equipment training (NET).
- Manage central data management program for equipment warranties.
- Management of the AMC portion of the Army-Wide Training Literature Program (ATLP); i.e., preparation of Army wholesale logistics literature (AWLL).

**b. Organization of AMC.* AMC is comprised of the headquarters, its MSCs, and various other activities and installations.

(1) AMC has assigned materiel readiness responsibility to designated MSCs under its control. These designated MSCs are responsible for the integrated management of their commodities. Integrated management includes:

- Research
- Development
- Design
- Modification
- Sponsorship of tests and evaluation
- Initial repair parts planning
- Tools, test equipment and handling equipment planning
- Technical and engineering supervision and services
- Product engineering
- Production engineering
- Cataloging and standardization
- Direction of procurement and production

- Materiel inventory management
- Mobilization planning
- Production base planning
- Preparation of equipment publications
- New equipment training
- Army warranty program

* (2) The major subordinate commands are:

- * U.S. Army Armament Munitions and Chemical Command (AMCCOM)—armament systems and ammunition.
- * U.S. Army Aviation Systems Command (AVSCOM)—aircraft.
- U.S. Army Communications-Electronics command (CECOM)—communications-electronics systems.
- U.S. Army Missile Command (MICOM)—missiles, rockets, and lasers.
- U.S. Army Tank-Automotive Command (TACOM)—tracked and wheeled combat, tactical, and general-purpose vehicles, selected construction and materiel handling equipment.
- U.S. Army Troop Support Command (TROSCOM)—field support items, amphibious vehicles, watercraft, and railroad equipment.

* (3) Research and development (R&D) command. U.S. Army Electronics Research and Development Command (ERADCOM)—is responsible for research, development, and acquisition of electronic equipment.

c. MSC Organization for Maintenance.

(1) *General.* The organization of a particular MSC within AMC is somewhat dependent upon the peculiarities of the support structure of the assigned commodity. The following are the functional elements common to MSCs regardless of commodity:

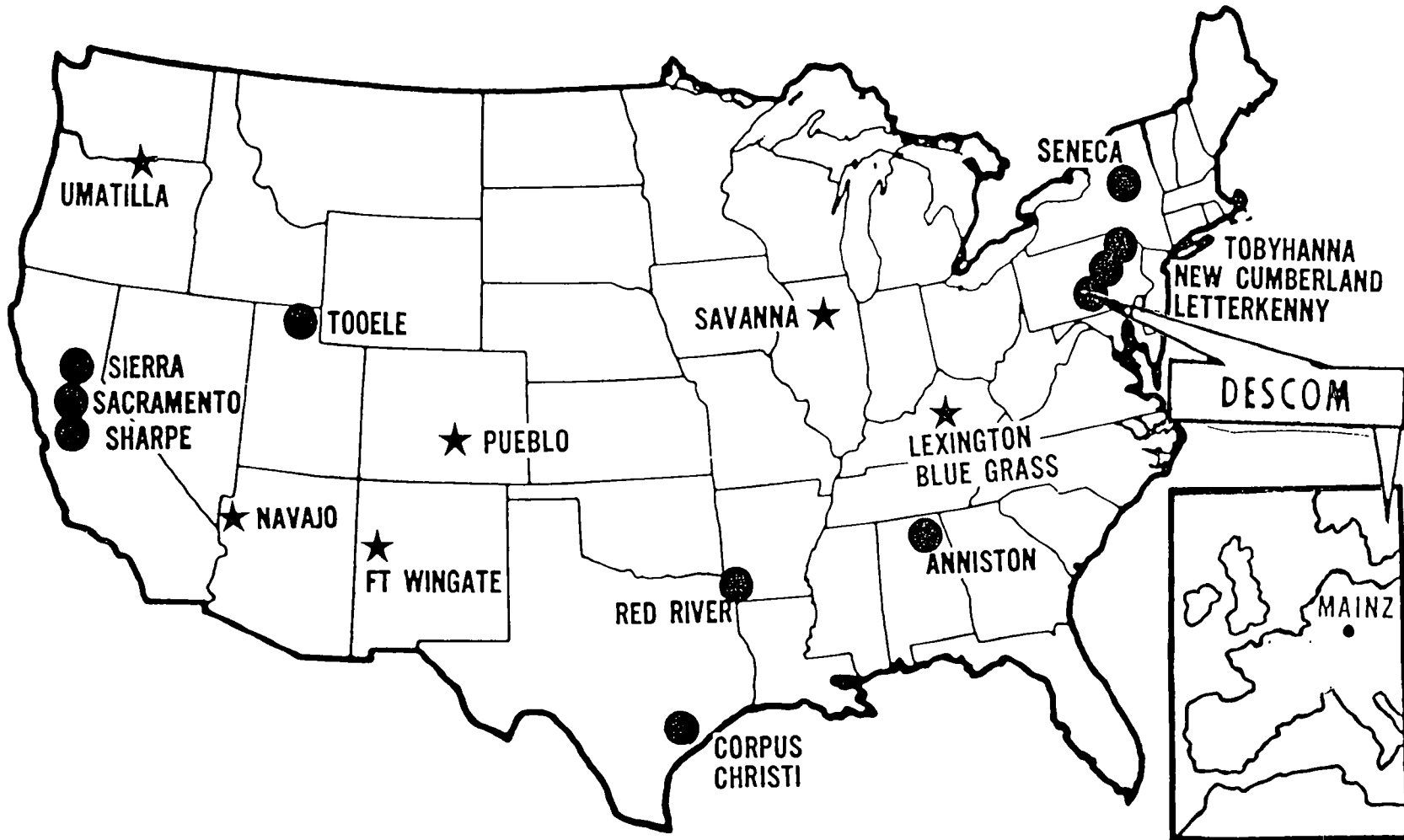
- Maintenance
- Materiel Management
- Procurement and production
- Project Managers
- Special Staff
- International Logistics
- Resources Management
- Product Assurance
- Personnel Training and Force Development
- Plans and Systems Analysis
- Management Information Systems
- Field/Liaison/Services

The coordination of the above elements is critical.

With respect to maintenance, the MSCs have two directors who coordinate and supervise the majority of maintenance engineering and depot maintenance operations. They are the Director for Maintenance, responsible for the National Maintenance Point (NMP) and the Director for Materiel Management, responsible for the National Inventory Control Point (NICP).

(2) *Scope of NMP Operations.* The NMP plays a vital role in system/item development and operation. Through maintenance engineering, design characteristics and support concepts are built into a new system. The NMP continues to track the system throughout its life-cycle, gathering operational performance data and modifying the system as needed. Actually, it is the NMP which is the key to the success of the AMC maintenance management program. Even though its activities are influenced to a considerable degree by the requirements of the NICP, the NMP has worldwide maintenance responsibility and technical responsibility for a specific commodity or group of commodities. Additionally, the NMP is responsible for providing Army depots with working-level direction relative to the maintenance support required for the commodity group. The scope of the responsibilities of the NMP in maintenance management extends from the early conceptual stages of materiel through the design, development, procurement, production, deployment, use, and disposal stages. Specifically, the major functions of an NMP are in the areas of maintenance engineering, support planning publications, and technical assistance. Therefore, the responsibilities of the NMP for the particular item or commodity continue throughout its life-cycle. The operations of the NMP and the NICP must be closely coordinated to ensure that adequate technical and administrative resources required to meet the needs of the equipment user and the maintenance support elements are available.

d. U.S. Army Depot System Command (DESCOM). DESCOM is responsible for the command and control of assigned US Army depots and depot activities. Depot missions are receipt, storage, issue and maintenance of assigned commodities. DESCOM manages the use of funds, manpower, physical plants and equipment required for depot maintenance worldwide. The information needed to manage depot maintenance operations is consolidated in a DESCOM data bank. This data bank is a source of data for reports to higher headquarters.



AMC organization for maintenance

CHAPTER 2

PLANNING FOR WHOLESALE MAINTENANCE SUPPORT

2-1. General

The maintenance plan is a description of the requirements and tasks to be accomplished for achieving, restoring, or maintaining the operational capability of a system, equipment, or facility. The maintenance support plan is normally a part of the Integrated Logistics Support Plan (ILSP). Maintenance plans provide many necessary components which make military operations successful. Maintenance requirements are influenced by the threat, the operational plans, and the requirements of the other functions of logistics.

**MAINTENANCE SUPPORT PLANNING IS A
KEY TO SUCCESSFUL MILITARY OPERATIONS.**

2-2. Industrial Preparedness

a. Industrial preparedness denotes an ability to manufacture or maintain materiel in an industrial facility, whether the facility is commercial or Government owned (organic). The Army is concerned both with the production capacity of commercial sources and their capacity to perform depot maintenance during and after mobilization. The maintenance capacity of organic depots, on the other hand, is used primarily for maintenance and not for manufacture. Depots manufacture components or parts that are not readily available from manufacturers to meet overhaul schedules.

b. The intent of industrial preparedness is to provide industrial capability and capacity sufficient to sustain varying levels of combat, including full-scale war, without costly duplication of facilities or excess capacity. Both commercial and Government (organic) sources are appropriate for use during and after mobilization, to provide enough capacity to supply the needed materiel. Organic capability is often established to insure the Army possesses the quality of technical information and experience necessary to maintain and operate a particular item. Organic capacity seldom exists, however, to perform the volume of work which will be needed for mobilization. Though organic facilities will expand their capacity to meet urgent requirements, commercial facilities will still be required.

**INDUSTRIAL PREPAREDNESS IS CRUCIAL TO
MILITARY READINESS.**

c. Industrial preparedness is greatly concerned with the existence of a readily available capability for industrial operations. This is particularly crucial, as there is not sufficient time to establish new industrial capabilities upon mobilization. The extent to which mobilization increases the industrial requirement is dependent upon several factors:

- The intensity and longevity of combat.
- The degree to which the inventory is stocked.
- Mortality rates of various items of equipment.

2-3. Depot Maintenance Mobilization Plans

DARCOM MSCs determine the depot maintenance mobilization requirements for combat essential items. These requirements are provided to DESCOM, who assigns the work to the appropriate depots. The depots analyze the plans and notify DESCOM of any requirements which cannot be accommodated. These excess requirements are reported to DARCOM, who forwards them to the appropriate MSC for inclusion in commercial industry's mobilization requirements.

2-4. Interservice Support

Wholesale interservice support includes all wholesale actions which result in the provision of materiel, facilities, or services between military services or between a military service and a Federal department or agency. This support may be the result of formal agreement, such as a depot maintenance interservice support agreement (DMISA), or it may be

more informally established, as by a memorandum of understanding (MOU). Interservice support makes available to a service which is a minority user of an item, the advantages inherent in the logistics system of the service who happens to be the majority user of the item, thereby, reducing equipment downtime, logistics pipeline inventories, and investment and operating costs. Any Army equipment common to another service should be considered for interservice support to the extent that an organic Army capability and capacity are not required. The criteria for selection of a service depot for maintenance are capability, capacity, and economy. An item used by one service may be maintained by another service.

2-5. Host Nation Support

Host nation support is a support arrangement in which the military and industrial forces of one nation support the military operations of another. This support can be of utmost importance to the wholesale maintenance planner if carefully planned and agreed upon in advance. Its use in maintaining common equipment or in providing other readily available support releases organic resources to perform other tasks. It tends to increase the amount of wholesale support and GS level maintenance available for supporting the combat forces. Plans to use host nation support are successful in contributing to materiel readiness when they take into account the realities of war's effects upon a host nation's ability to provide assistance. Such planning must take into account the stability of the host nation, the nature of the threat, and the availability of other sources of maintenance support.

2-6. Contract Maintenance

a. Contract maintenance is the maintenance activity performed under contract by commercial organizations on either a one-time or continuing basis. It provides an effective means for augmenting the Army's resources in accomplishing materiel maintenance.

**HOST NATION SUPPORT IS VITAL TO THE
WHOLESALE MAINTENANCE PLANNER.**

nance. This does not mean that contract maintenance is a substitute for bad planning; on the contrary, it can only be helpful if it is preceded by and implemented with particularly good logistics planning. A contractor needs the same resources that an organic Army facility needs such as tools, repair parts, facilities, plant equipment, qualified personnel, and sufficient time to plan the maintenance operations required. Contract maintenance is a necessary component of industrial preparedness, and must be planned and employed in a manner which will be effective under wartime or emergency conditions. Contract maintenance may be performed by a contractor using government-owned contractor-operated (GOCO) or contractor-owned contractor-operated (COCO) facilities.

b. The MSCs are responsible for planning and awarding contracts for depot maintenance. They are also responsible, in coordination with DESCOM, for insuring that obligations and contract completions are performed on a timely basis.

2-7. Automation

a. Increasing use is being made of automatic data processing (ADP) techniques in managing and operating the Army's maintenance system. This automation extends much further than merely data processing, however. Automated techniques are being used for communications, printing, training, and the storage and retrieval of information. The impact of automation upon maintenance management is immense. Collection of performance data, determination of requirements, command and control, communications, and financial management are highly dependent on automation. The volume and sophistication of data which are required to manage maintenance preclude manual handling of this information. The use of automation will continue to increase as centralization of management increases and the need to "do more with less" continues.

b. The dependency upon automation demands that ADP and associated communication systems be

able to satisfy the maintenance management requirements during wartime. This requires that the systems must be designed to perform during hostilities and that they must be protected from combat damage.

c. Systems must be designed to provide for a minimum amount of turbulence in the transition from peace to war. To operate in war as we do in peace requires that the user need not learn any new tasks upon mobilization.

d. Maintenance data pertain to the information which a system generates during day-to-day operations. This information, reflected in reports of various types, is used by maintenance managers to determine program performance levels. Management data serve many purposes. When made available on a timely basis, it is indispensable to effective life-cycle management of systems and equipment. These data are required to conceive, define, develop, test, and acquire an item or a system, and maintain and support it properly. Management data provide maintenance managers with the information required to evaluate the readiness availability status of equipment, the readiness posture of a unit, the adequacy of resources, and the cost-effectiveness of maintenance operations. By carefully analyzing management data, maintenance managers are able to isolate problem areas to make adjustments necessary for improvements in these areas. Analyses of these data enable managers to appraise current managerial concepts and operating procedures. As a result of this appraisal, the manager may employ, in other areas, modifications of those concepts that are producing the desired level of operational efficiency.

e. There are two primary standard automated systems developed and implemented by DARCOM. They are the Commodity Command Standard System (CCSS), which is used by the DARCOM MSCs to support the NICPs and NMPs and the Standard Depot System (SDS) to support the Army's depot system. With respect to maintenance, CCSS and

SDS provide an automated means to ascertain actual overhaul consumption data to be used by depots in acquiring repair parts. In an effort to eliminate the use of various command-unique maintenance systems, the Standard Army Maintenance System (SAMS) is being implemented. When fully implemented, SAMS, will provide an automated, uniform, standard maintenance system that is responsive to each level of command from the user, through the retail and wholesale levels to the national level.

2-8. Supply Relationships

The maintenance and supply systems are closely linked, since the output of one affects the other. All levels of maintenance are customers of the supply system. Also, all levels of maintenance place materiel back into the hands of the user. At the wholesale level maintenance is considered a source of supply.

a. Repair parts. The NMP responsible for an item predicts requirements for repair parts. Using those predictions, the NICP plans to make parts available.

**(1) Retail.* Recommended initial repair parts stockages are established based on provisioning data developed during Logistics Support Analysis (LSA) on new equipment. Data generated and based on the maintenance concept, failure factors, essentiality, or safety factors are used to establish recommended supply list allowance card (SLAC) decks which propose stockage at prescribed load lists (PLL) and authorized stockage lists (ASL) levels. These PLLs and ASLs are critical in supporting the maintenance mission to provide materiel readiness. A sufficient quantity must be stocked to be compatible with re-supply operations, but it must not limit the unit's mobility or otherwise interfere with performance of the mission.

(2) Wholesale. The NICP supplies repair parts for depot maintenance based upon historical usage data and engineering data developed by the NMP.

b. War Reserves. War reserves provide the interim support essential to sustain operations until industry can meet all post D-day consumption. War reserves are used for:

- Filling post D-day combat consumption requirements.
- Replacing mobilization training losses.
- Issue to mobilization units.

**c. Pre-positioning of Materiel Configured to Unit Sets (POMCUS).* POMCUS is a set of equipment stored in the theater in the proper quantities for immediate issue to a particular deployable unit. It differs from normal theater war reserves, in that POMCUS stores the unit's equipment in one loca-

tion; war reserves are generally stored by commodity, rather than by unit. POMCUS stocks are maintained to be as ready to issue as possible, achieving a high degree of readiness. This is crucial in today's "come as you are" environment.

**d. Direct Support System (DSS).*

(1) The DSS is a theater-oriented depot to general support unit/direct support unit (GSU/DSU) supply system. It uses high-speed communication and air and sea shipments direct from designated Continental United States (CONUS) theater-oriented depots to a GSU/DSU overseas. DSS in wartime is restricted to air lines of communication (ALOC) class IX supply, (repair parts), and selected class II items (maintenance related tools and equipment). Broad objectives of DSS are to increase supply efficiency, responsiveness, and asset visibility while decreasing inventories and time lags in the supply pipeline. Specific objectives of DSS are:

- More efficient use of resources.
- Improvement of requisition response time by reducing order shiptime (OST).
- Reduction of inventories without degradation of materiel readiness.
- In-transit asset visibility and control.
- More efficient use of communication and transportation techniques.
- Containerization of materiel for shipment.
- Reduction of stockage vulnerability in theater to air or nuclear attack.

(2) Although some oversea inactive depot stockage is retained (war reserve, safety level, and operational project stocks), most support unit supply requirements are met by direct delivery from CONUS depots, bypassing oversea theater depots and break bulk points.

e. Direct Exchange (DX).

(1) DX is the exchange of a serviceable repairable module (from the DX activity) for an unserviceable one (from the user). Such a module is an item assembly, subassembly, board/card, or component designated as a single unit to facilitate and simplify production line techniques, transportation, supply, and maintenance. A standardized DX system establishes Army-wide policy guidance and management techniques for those supply and maintenance actions essential in the execution of the DX program for repairable/recoverable modules in an efficient, responsive, and cost-effective manner.

(2) DX procedures allow a user to obtain serviceable modules from a supporting DX activity with minimum paperwork and administrative burden; this, in turn, frees the user from detailed piece-part repairs and excessive parts stockage.

- (3) The objectives of DX include:
- Improve operational readiness.
 - Establish a standardized system integrated into the Army supply system which incorporates simplified administration and accounting, based on a one-for-one exchange.
 - Provide one-stop support for all DX modules.
 - Establish mandatory stockage levels of essential DX modules at each DX point and supported organizations.
 - Obtain total asset visibility of both unserviceable and serviceable recoverable modules onhand from DS to wholesale logistics levels.
 - Provide for a single issue system for recoverable coded materiel in each exchange loop.
 - Establish DX loops between users and supporting intermediate (DS) maintenance units.

f. Maintenance Floats. Float is a quantity of selected items of equipment authorized to replace like items evacuated for maintenance. One primary purpose of the float is to maintain the operational readiness of supported units. There are two types of float: repair cycle float (RCF) and operational readiness float (ORF).

(1) RCF is a quantity of items authorized for stockage at the wholesale level of the supply system. It is used to replace items undergoing scheduled depot maintenance.

(2) ORF is a controlled quantity of selected items of equipment authorized for stockage at the intermediate (DS) maintenance level. It is used to replace unserviceable, repairable items in the using units when intermediate (DS) maintenance cannot repair the unserviceable item within specified time limits.

CHAPTER 3

MAINTENANCE ENGINEERING

3-1. Maintenance Engineering During Development

Maintenance engineering in development phases determines where, when, how, why, and by whom maintenance action will be taken to retain equipment in or restore it to serviceable condition. It develops concepts, criteria, and technical requirements during the development of new items. These are applied during production and deployment for timely, adequate, and economic maintenance support of equipment and systems.

a. Maintenance engineering participates in the planning and development of equipment to minimize the need for maintenance resources. Effective maintenance participation significantly influences design configuration which, in general, dictates support investments and operating costs associated with new equipment. A valuable input to maintenance engineering is historical data on similar items, components, and assemblies. The most valid data are sought from industrial sources, test data, and special reporting systems. These data, properly screened, arranged, and analyzed, provide insight into maintenance requirements and support characteristics expected from the system.

b. Information that can be obtained from historical data includes ratio of man-hours to elapsed maintenance time, ratio of maintenance time to operating time, man-hour utilization by skill and maintenance level, and computation of the mean and variance for maintenance man-hours. Analysis of these data may indicate the need for actions to improve supportability of a like item under development. Such actions may take the form of incorporating design changes or support constraints, establishing different support procedures, reducing or increasing the scheduled maintenance and inspection requirements, and changing requirements for personnel, tools, and test equipment in malfunction diagnosis, troubleshooting, and repair procedures.

**EFFECTIVE MAINTENANCE ENGINEERING
CONTRIBUTES TO LOWER LIFE-CYCLE COST.**

MAINTENANCE ENGINEERING = DESIGN
INFLUENCE

SYSTEMS MUST BE DESIGNED FOR BATTLE-
FIELD REPAIR.

c. Maintenance is involved early in the process of development, specifying criteria by which both logistics and support considerations will affect design and configuration of a new item.

(1) The technical, military, and economic bases, and the overall feasibility of the development concept are established through comprehensive studies which are performed by various activities. Proper testing procedures are developed as a result of the identification of critical, technical, and operational issues.

(2) Interfaces between the developing system and other systems, whether existing or planned, are defined while support equipment requirements are identified. Quantitative and qualitative requirements for items are determined, and the means for adding the materiel to the Army inventory are considered.

(3) Systems must be maintainable under combat conditions. Maintenance engineering predicts battle damage failures of system components. This information is used to estimate wartime repair part requirements and to identify those maintenance actions required in wartime. Special repair techniques are then developed which allow a damaged system to return quickly to combat. If required, special tools and test equipment are provided for battle damage repair.

d. The maintenance engineering effort during materiel development is concerned with designing equipment which is easily maintained. This effort is complicated by the related support elements which must be fully considered. The overall development of the various support elements is accomplished through an Integrated Logistics Support (ILS) program which includes:

- Design influence and integration.
- Maintenance plan.
- Manpower and personnel.
- Supply support.
- Support equipment and test, measurement, and diagnostic equipment (TMDE).
- Training and training devices.
- Technical data.
- Computer resources support.
- Packaging, handling, storage.
- Transportation and transportability.
- Facilities.
- Rationalization, standardization, and interoperability.

e. Maintenance engineering impacts on each of these elements, and, in fact, the ILS process advocates that maintenance engineering become the "motivator" or "integrator" of all support elements. A close coordination must exist between maintenance engineering and contractors submitting proposals for production of the equipment. In many instances, contractors may propose for consideration support concepts that differ significantly. After these proposals have been evaluated, a final production contractor is selected, establishing the framework for fully developing all maintenance support elements and the interfaces with other logistics functions.

f. Operational readiness, maintainability, and reliability are engineering design requirements. Engineering insures the development of data which lead to a proper balance between costs, system performance, and support. Reviews and tests provide feedback concerning required changes in design which, in turn, must be analyzed and incorporated into the hardware. Any corrective engineering measures uncovered must be applied as quickly as possible and the effectiveness of the improvement must be tested, insuring that maintenance requirements are met and improvement is achieved through reduced failure rates, increased operational readiness, or a related gain. The maintenance engineer is primarily concerned with minimizing later

TESTING IN THE MISSION ENVIRONMENT IS CRITICAL TO EFFECTIVE MAINTENANCE SUPPORT.

OPERATIONAL READINESS, MAINTAINABILITY, AND RELIABILITY ARE ENGINEERING DESIGN REQUIREMENTS.

**MAINTENANCE TASK ANALYSIS IS THE HOW
and WHAT**

**MAINTENANCE ALLOCATION IS THE WHO
and WHERE.**

maintenance activity, incorporating the most reliable components, modular construction, and built-in test indicators. His aim is to achieve a design which will eliminate or minimize any deficiency that prejudices ease of maintenance.

g. An analysis of all the maintenance tasks which can be performed on an item precedes the allocation of those tasks to the appropriate level of maintenance. The analysis addresses the time required to perform specific maintenance tasks; determines the skills required to perform the tasks; and identifies the facilities, equipment, and repair parts required. The resulting maintenance task allocation must be made known to personnel having maintenance, supply, and support responsibility. This allows the support rationale of the development phase to be implemented in the operational phase.

h. The Maintenance Allocation Chart (MAC) or maintenance task matrix for some aircraft is a listing of maintenance operations applicable to an item. For each component and assembly of the end item, it identifies the maintenance operations that can be performed and assigns those operations to the appropriate level of maintenance. The MAC impacts on the supply as well as the maintenance function, because it serves as the starting point for selection of repair parts and the assignment of those parts to the appropriate levels of maintenance.

3-2. Materiel Fielding

Service to the field is based on timely and effective development of the main items of a system and all of its support elements so that all of its parts can be concurrently fielded. Failure to consider even one minor component of a system may cause delay in fielding until proper fabrication, test, and installation can be completed. It is essential first to determine that a positive, supportable design can be developed that is economically feasible and technically supportable.

a. *General.* Materiel fielding consists of that portion of the Life-Cycle Management Model (LCMM) which prepares for placing new equipment and systems in the field. The actions completed during the earlier phases of the LCMM were designed to simplify this process. Timely dissemination to the user of the following types of information is imperative to successful fielding.

- Maintenance publications.
- Operator manuals.
- Supply publications.
- Technical bulletins.
- Repair parts stockage recommendations.
- Army Modernization Information Memorandum (AMIM).
- Materiel Fielding Plan (MFP) to include the materiel fielding agreement and composition of the materiel fielding team.

b. *New Equipment Training (NET).*

(1) Planning for NET occurs as early as possible in the development process, since NET is an essential link between the materiel developer and the user of the new equipment. The objective of this early planning and programing is to have trained personnel available for testing and evaluation efforts and, most important, that qualified personnel be available to the using units concurrent with the fielding of the hardware. The materiel developer puts together a training program designed to qualify an instructor cadre team in operation and maintenance of the new item or system. This cadre, in turn, trains additional instructor personnel who will make the training base for resident training in the US Army Training and Doctrine Command (TRADOC) schools system. Thus, skills obtained and developed in the wholesale community are passed on to the retail community in time to train

**NEW EQUIPMENT TRAINING IS THE LINK
BETWEEN DEVELOPER AND USER.**

the ultimate user concurrent with receipt of the hardware. Frequently, the timing of new equipment deployment is such that the TRADOC schools are not able to have trained people on hand in the using units when the new equipment arrives. When this situation occurs, a New Equipment Training Team (NETT) is sent to the field to train the receiving units in the operation, maintenance, and mission-employment of the equipment. The goal of such training is to produce proficient users and support personnel who are capable of operating and maintaining deployed items or systems at full operational capability.

(2) While NET is normally associated with new equipment, training may be required for equipment redistributed as a result of product improvement or the application of Modification Work Orders (MWO).

3-3. Maintenance Engineering After System Deployment

Effective controls must be established and maintained to minimize deterioration of reliability, availability, and maintainability (RAM) during supply and maintenance activities and operational use. The operational phase also creates technical knowledge for resolving problems and for product improvement. The following elements must be executed:

- Effective collection, analysis, and followup of defective parts replacement data. Timely identification and resolution of problems, to include product improvements is the objective of this effort.
- Effective controls over parts substitution during maintenance operations.
- Periodic stockpile reliability evaluation of selected items.
- Evaluation of the effects of repetitive maintenance.
- Effective program to control application of approved modifications.
- Continuous or periodic assessment of RAM characteristics, based on data from operational use.

MAINTENANCE ENGINEERING ACTIVITY EXTENDS INTO THE OPERATIONAL PHASE OF A SYSTEM'S LIFE CYCLE.

3-4. Performance Data

Data feedback from the field are generated and reported in order to continuously monitor and evaluate a deployed item or system.

a. Data are gathered worldwide, examined, and evaluated using statistical methods. One method of generating maintenance data is sample data collection (SDC). During system development, an SDC plan is considered for each new or modified system. Uses of resulting data include evaluation of equipment failure frequency and cause, failure trends, and time required for repairs. These data relate to the RAM studies of earlier phases and are useful in developing repair standards and in forecasting repair parts, labor, and total maintenance effort requirements. Economic studies may be made to compare actual field results against projected goals. They are also used in determining whether to repair or purchase a replacement item. Such economic comparisons are of value in developing future similar systems. Area density and usage reports are used to assist in forecasting depot overhaul requirements.

b. Of particular importance to maintenance management are the various usage and maintenance data generated under the reporting procedures of The Army Maintenance Management System (TAMMS). A few of the uses of TAMMS data are:

- Assess performance of new equipment in terms of reliability and maintainability.
- Evaluate effectiveness of maintenance support and the adequacy of resources allocated for maintenance.
- Configuration control.

TAMMS data provide input for managing the maintenance aspects of a deployed item or system throughout useful service life. In fact, these data may be essential in determining when useful service life has ended from a cost of maintenance point of view. Collection and analysis of RAM data are essential elements in evaluating maintenance performance.

c. Data feedback from field commands provides an essential element for management of an item or system throughout its useful life. Decisions to modify, change, improve, or dispose of an item or system require such feedback for effective monitoring and evaluating from production to disposal. Feedback from the field is of value not only to trigger changes and improvement in hardware and operational concepts, but also in evaluating other aspects of the total system such as training, doctrinal, and technical literature; basis of issue (BOI) plans; Tables of Organization and Equipment (TOE); and training programs at all levels.

3-5. Equipment Improvement Recommendations (EIR)

EIRs are provided by users to the NMP having responsibility for the equipment. Prompt action by the NMP is evidence that the information provided by users is important to the correction of failures, deficiencies and shortcomings as well as to the development of new systems, the ongoing analysis of existing system and the sustaining of materiel readiness.

a. The EIR is a means for the user to propose changes to equipment which will improve its operability. Since the majority of the experience with equipment resides with the user, this represents a well-recognized source of recommended improvements.

b. The EIR is feedback data on equipment which has experienced failures, deficiencies and shortcomings due to faults in design, operations, and manufacture. The faults may cause partial or total failure during field use. Users are required to report these deficiencies to obtain corrective action on the reported materiel. This report initiates the purging of similar deficient materiel from the supply system and enables corrective action to preclude the deficiencies from recurring. EIRs insure that actual experience is incorporated into research, design, development, and production efforts on new equipment to make more realistic determinations of com-

ponent replacement rates, repair cycle time, maintenance float requirements, maintenance and supply problems by geographical areas, and repair parts stockage levels. Because of the relationship of high equipment readiness and the readiness posture of a unit, EIRs are reviewed, analyzed, and acted upon without delay.

3-6. Logistics Assistance

a. Logistics assistance is a field service provided to military equipment users by experienced and technically trained supply and maintenance personnel on a worldwide basis. Although field commanders at all levels are responsible for developing an organic capability to perform supply and maintenance functions, much of today's technology demands that highly specialized technical assistance be provided. Assistance in developing this capability or solving problems beyond the control of field commanders is provided either by highly skilled DA civilians or military personnel, or by field service representatives. Logistics assistance programs are controlled and operated from the Continental United States (CONUS) by elements of NMPs of DARCOMs MSCs. It is not uncommon to have facets of a technical assistance program pertaining to newly introduced and highly complex systems operated by the prime contractor under specific terms of the devel-

opment-production contract. During early development, future requirements for technical assistance personnel, special skills, contractor personnel, training of technicians, and related costs for each materiel approach are identified and carefully evaluated. The logistics assistance program is less likely to affect concept selection than are some of the other support elements. However, it is a major support element and can have a significant effect on total life-cycle costs. Logistics assistance is normally applied during the operations period of the system life cycle. System support managers provide such assistance to support international logistics obligations by contract or through in-house capability, depending on scope or requirement, degree of urgency, and capability of providing needed personnel.

b. The NMP maintains expertise at designated commands which serve as a central inquiry bank for logistics support matters relative to fielded systems. These activities serve as the highest level of expertise available to provide logistics assistance to installations and organizations in CONUS and overseas. Through direct communication with the user or maintenance activities at the lowest level, extensive pinpoint assistance can be provided as well as accumulating data which will result in product improvement.

CHAPTER 4

WHOLESALE MAINTENANCE OPERATIONS

4-1. General

Wholesale maintenance operations possess the most sophisticated maintenance capabilities available to the Army. Most wholesale operations are conducted in fixed facilities, using complex skills in an industrial environment, but, when required, provide maintenance support onsite to the retail system.

4-2. Depot Maintenance Operations

Depot maintenance operations support the overall DA inventory management program. They are used as an alternative or supplement to new procurement as a source of serviceable materiel to meet DA materiel requirements. Programs for the depot maintenance of materiel except those for the repair and return to user of equipment of the Reserve components, are approved by HQDA and controlled by national level materiel managers under the monitorship of the DCSLOG. The Reserve component's repair-and-return-to-user depot maintenance program is controlled by the US Army Forces Command (FORSCOM) and coordinated with DCSLOG, DA. Approved depot maintenance programs are executed by designated Army facilities, by agreement with other military services, and by contractual arrangements with commercial firms.

4-3. Elements of Depot Maintenance

Depot-level maintenance requires more extensive shop facilities, more specialized equipment, and more highly skilled personnel than those required by lower levels of maintenance. Depot maintenance demands the following elements:

THE DEPOT SYSTEM IS A "WARM BASE" FROM WHICH TO MOBILIZE THE ARMY'S RESOURCES TO SUPPORT THE NATIONAL DEFENSE.

a. *Unserviceable Materiel.* Unserviceables are generated rapidly in the early days of war; they must be overhauled by depot maintenance and returned to combat quickly to insure supply availability. Close coordination must be performed with supply and transportation to reduce time lost to transportation and handling.

b. *Repair Parts.* Depot maintenance operations routinely consume large quantities of repair parts. Provisioning and forecasting for this consumption must take into account wartime consumption rates.

c. *Obligational Authority.* Authority to expend funds is used as a control mechanism, and insures that scarce financial resources are used in a method which improves readiness.

d. *Tools, Test Equipment, Facilities, Manpower, and Technical Documentation.* These resources provide a depot facility with the capability to maintain an item of equipment. Their necessity is foreseen and planned for in advance of the date they are needed to support the equipment.

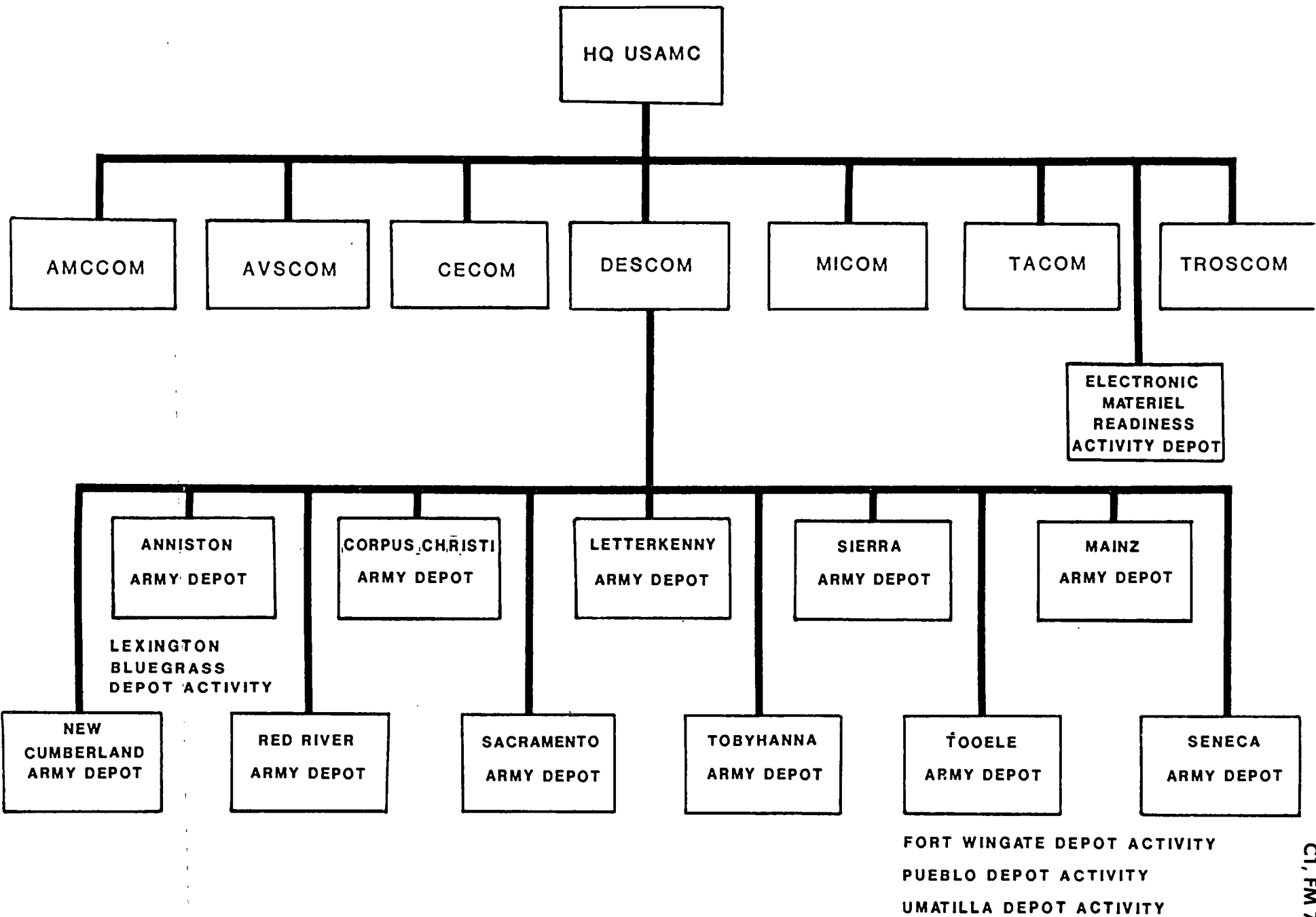
4-4. Organic Facilities

Army facilities which perform wholesale maintenance

are generally depots, arsenals, and ammunition plants. Depots have the most all-encompassing responsibility for wholesale maintenance operations; arsenals and ammunition plants have a large mission to manufacture weapons and ammunition, respectively, and a more limited mission to perform maintenance of items for which their special capabilities are needed.

a. *Expansion.* Organic facilities are retained in such a state as to allow expansion of capability and capacity during national emergency. Capacity is increased by working longer or additional shifts and hiring additional personnel. Capability, too, may be increased by acquiring additional personnel, but the availability of certain skills may be severely limited. Since defense contractors will be attempting to hire similar skills at the same time, competition for personnel will be severe.

(1) *Augmentation of Depot Work Force.* Wholesale maintenance relies on National Guard and Army Reserve units to support the depot maintenance mission. Trained units and individual personnel are employed to augment the depot maintenance



nance work forces as soon as possible during mobilization.

(2) *Limiting factors in expansion.* Limited facilities, tools, and test equipment will cause delays in increasing the Army's industrial strength during mobilization. Plant equipment or other equipment stored as war reserve will be used as required, but many items will not be obtainable for months or years, under the best conditions.

*(3) *Aviation Classification Repair Activity Depots (AVCRAD).* A form of expansion of depot maintenance is the planned use of aviation classification repair activity depots to classify and repair aviation avionics equipment for rapid turnaround to the troops in forward position.

**b. Army Materiel Command (AMC) Support to Mobilized Forces.*

(1) During the early stages of a contingency, forces supported by pre-positioned materiel configured to units sets (POMCUS) depart the CONUS and are transported to the sites of their respective equipment. Selected forces then mobilize at predetermined locations throughout CONUS and are outfitted with the equipment remaining after departure of the POMCUS units.

*(2) This equipment, called POMCUS Unit Residual Equipment (PURE) must be made ready for deployment as rapidly as possible. The installation maintenance activity provides a concerted effort to perform the maintenance required to make equipment combat ready. Expeditious supply support to such mobilization centers is provided by the AMC.

(3) While it is not anticipated that extensive depot level maintenance will be accomplished, an assessment of component repair at the depot level is required in order that contingency plans can be developed to insure that depot facilities can be activated on short notice. This capability, coupled with the technical assistance available from the depot level, will expedite mobilized units achieving the desired state of readiness for deployment.

4-5. Contractor Facilities

a. General. Just as the wholesale system relies on civilian industry for procurement of new items, the resources of industry are also available for maintenance contracts. It is the policy of the Government to rely, to the maximum practicable extent, on the free competitive private enterprise system for required products or services. Only under certain circumstances will the Government obtain its products or services from organic sources. The reasons for this policy are well established; local and national economies are influenced by Government facilities displacing private industry. A healthy private in-

dustrial base is important for economic reasons, but more importantly, it represents a key source of industrial capability. DA does not intend to provide organic capacity to perform all the wartime workload. On the contrary, the intent is to provide whatever capability is required, organic or contract, to complete the wartime requirement. Organic depot maintenance capability and capacity are established and sustained on the basis of workloads generated by weapon systems and equipment that are essential to the accomplishment of the Army's mission.

b. Uses for Contract Maintenance. Contract depot maintenance is used in the following situations:

- Depot maintenance requirements exceed the military capability and capacity retained to support mission-essential materiel.
- Depot maintenance is required for support of commercial equipment and nontactical elements. This is true only if performance of such work is not required for military effectiveness, personnel training, or rotation and career development of Army personnel.
- Interim contractor support is required to provide a smooth transition to the acquisition of an organic support capability.

4-6. Depot Maintenance Performed

a. Overhaul is the highest level of maintenance normally performed on Army equipment. It is accomplished based upon specific criteria, detailed in a written document, which is usually a Depot Maintenance Work Requirement (DMWR). Overhaul returns an unserviceable time to a completely serviceable condition but, in most cases, not a "like new" condition. Overhaul may be performed less frequently in wartime than peacetime due to the urgency of returning materiel to battle in the most expeditious manner. This possibility is dependent upon how urgently the item is needed in the combat area, estimated time to overhaul, and the probability that a lesser degree of maintenance will be effective in keeping the item in service.

b. Rebuild is action taken to restore equipment to the original manufacturer's specifications. It exceeds overhaul in complexity and expense, but does not necessarily offer greater reliability characteristics than overhaul. Therefore, even though the ability to perform rebuild may exist, it is not normally done. In certain situations, however, rebuild may be prudent for other reasons such as safety in the case of medical materiel. Rebuild can be performed only upon authorization of DA DCSLOG.

c. Conversion is the alteration of the basic characteristics of an item to such an extent as to change

its mission and performance capability and to result in a change in model designation. Performance of conversions will be curtailed during wartime and limited to those extremely urgent conversions which are immediately necessary for improving the fighting capability of combat units. Such conversions will be performed whether or not they can be performed in conjunction with overhaul. Most conversions scheduled in peacetime are not urgent enough to be required in wartime.

d. Activation is the depreservation, servicing, inspection, testing, and other related maintenance actions required to return a stored or inactive item to operational use. This operation is of utmost importance during mobilization, as items are removed from storage and issued to mobilizing units or to units experiencing combat losses.

**e.* Modification is the alteration of an item which does not change the basic characteristics of an item to such an extent as to change its mission or performance capability and to result in a change in model designation as does a conversion. Modifications may be applied during overhaul or to equipment in the field by depot teams or contract teams. Only the most critical modifications are considered to warrant the expenditure of resources during wartime. Any modifications deserving attention in wartime must relate directly to a deficient combat capability.

**f.* Repair is the specified maintenance required to correct materiel damage and to restore the item to required serviceability standards. It includes intermediate (GS) maintenance performed levels by depot maintenance personnel. During wartime, repair may be performed much more frequently by depot personnel than during peacetime. The requirement to repair equipment quickly and return it to combat sometimes precludes the performance of overhaul, and requires that repair be limited to those repair actions necessary to return the item to combat.

g. Depot maintenance assistance is the use of qualified depot maintenance personnel to perform onsite maintenance requiring those skills and equipment normally restricted to depot level operations. This is one of the more important roles of depot level maintenance during the mobilizing stages of military conflict. Depot level maintenance augments the maintenance capability of the retail system during mobilization, in that depot skills and equipment are made available onsite to perform depot level tasks. This assistance is available to all active Army, Army Reserve, and Army National Guard units which are preparing to fulfill their combat missions.

h. Depot technical assistance is onsite assistance of a technical nature which is limited to providing

information, instruction, and guidance. No actual maintenance task is performed by the assisting party.

i. Manufacture is the fabrication of an item by application of labor and/or machines to materiel. Depot capability exists to manufacture many items, mostly repair parts; this capability is restrained during peacetime due to the diseconomy of such operations when compared to private industry and its continuous production lines. During wartime, however, for selected parts, depot fabrication will be used to the maximum extent required. This does not, however, relieve the requirement to plan in advance for sufficient quantities and timely production from private industry. Depot fabrication is not a cure for improper planning, but rather an appropriate source of manufacture under crisis conditions.

j. Reclamation is the authorized processing of items to obtain parts or components that are to be retained in the inventory prior to taking disposal action on the remaining items. Depots take such action after authorization by the NICP of the responsible MSC or other inventory manager. During wartime, reclamation will in some cases be a very important source of repair parts, in those cases where nonreparable equipment possesses parts which are urgently needed somewhere in the supply system. Most of such work is performed by the retail maintenance system, but when nonreparable items are inadvertently returned to the depot system, it is performed there.

k. Renovation is the test, evaluation, and rework of ammunition and special materiel required to retain the desired readiness capability.

4-7. Wholesale Maintenance in the Theater of Operations

a. General. Wholesale maintenance is oriented toward supporting a theater of operations or a contingency force anywhere in the world. The most immediate assistance required of wholesale maintenance is that supplied by the depot level of maintenance. Depot maintenance has a responsibility to return serviceable items to the wholesale supply system, but in time of war has an immediate and urgent responsibility to return items quickly to a theater in support of military operations. The necessity of wholesale maintenance operations maintaining a presence in the theater is derived from the nature of today's battlefield. Among the factors influencing the situation are:

- Lack of warning prior to initiation of hostilities.
- Intensity of combat.

- Immediate heavy losses of personnel and materiel.
- Limited inventories of materiel.
- Abundance of combat-essential components not reparable at retail levels.
- Lack of efficiency of retail levels of maintenance caused by the extreme demands of mobility.

b. Relationship Between Wholesale Maintenance Operations and the Theater.

*(1) The peacetime existence of wholesale maintenance in the theater must continue in wartime. Transfer of a mission from the wholesaler to the theater during the transition to war or during early war is not acceptable.

(2) Written agreement must exist between the wholesaler and the theater commander, to clearly delineate the functions for which each is responsible. This agreement may be a memorandum of understanding (MOU), memorandum of agreement (MOA), support agreement, any other appropriate agreement, or a combination of these. Agreements include provisions for the mutual support of the wholesaler and the theater in peacetime, transition, and wartime. The agreement includes:

- Scope of maintenance to be performed by the wholesaler.
- Identification of the equipment to be maintained.
- Facilities to be provided by the theater.
- Arrangements for all contractor support, whether host nation or United States.
- Responsibility for establishing priorities and directing the distribution of repaired materiel.
- Clear delineation of the responsibility for wholesaler and theater functions.
- Provisions for any other mutual support required during peacetime, transition, and war.

(3) Command, control, and supervision of wholesale personnel, operations, and missions are the responsibility of the wholesaler. The theater commander establishes and prioritizes the requirement, but the how and where of meeting that requirement is the responsibility of the wholesaler. Under certain conditions, however, responsibility for wholesale maintenance is shared with the theater, or in time of sufficient emergency, absorbed entirely by the theater. The circumstances in which command and control of wholesale elements transfers to the theater is delineated in written agreement.

c. Location of Wholesale Maintenance Operations.

(1) A contingency force may have no need for

extensive wholesale maintenance outside the CONUS. Wholesale support may be limited to technical assistance or maintenance teams having limited goals and missions of short duration. A fully developed theater, however, may require extensive wholesale support and depot maintenance capability in the communications zone (COMMZ). Wholesale maintenance involving civilians, whether DA, host nation, or contractor, are not deployed forward of the rear corps boundary, except for specific missions of limited duration.

(2) Existing sites of wholesale maintenance operations are continued in wartime as long as possible. Alternate sites, preplanned during peacetime, are used when changing wartime conditions so dictate.

(3) Wholesale maintenance operations require protection, as they are a vital element in providing combat sustainability. Provisions must be taken to provide protection, as the fixed facilities are extremely vulnerable to detection and attack. At the discretion of the wholesaler and in coordination with the theater, wholesale facilities may be placed in the COMMZ, offshore, or in a third country.

d. Scope of Depot Maintenance. Depot maintenance performs in wartime the minimum maintenance required to make equipment mission capable.

*(1) In wartime, overhaul is not performed to the extent required by a DMWR. A not-mission-capable item is made mission capable, but not necessarily capable to perform fully every element of every mission for which it was designed. In short, long-term reliability of equipment may be sacrificed in favor of short-term operational capability. This entails, however, a need for the wholesaler to identify those maintenance actions which can be neglected or modified under emergency conditions. The extent of overhaul is dictated by the urgency with which equipment is need in combat. This attitude parallels the concept of applying minimum essential maintenance only (MEMO) to the retail maintenance of materiel.

(2) When necessary, depot maintenance elements perform general support maintenance, including repair, to assist in returning materiel to combat. This is accomplished in fixed facilities as necessary, but the preferred attitude is one of forward support, to complement the forward orientation of retail support levels. Whenever feasible, general support maintenance required of depot organizations is performed onsite.

e. Maintenance in the Corps.

(1) The materiel management center (MMC) of the corps support command (COSCOM) accomplishes integrated maintenance and supply support

in a theater of operations. The COSCOM MMC provides the interface between the wholesale logistics level (NICP/NMP) and the supported forces. The MMC discharges day-to-day materiel management responsibilities under a concept of centralized management and decentralized operations. Acting on the requirements of supported forces, the MMC places supply demands on the Theater Army MMC (if more than one corps) or CONUS-based NICPs of AMC, the Defense Logistics Agency, and the General Services Administration. The MMC may also meet support demands through local procurement and by redistributing supplies and maintenance assets within the command.

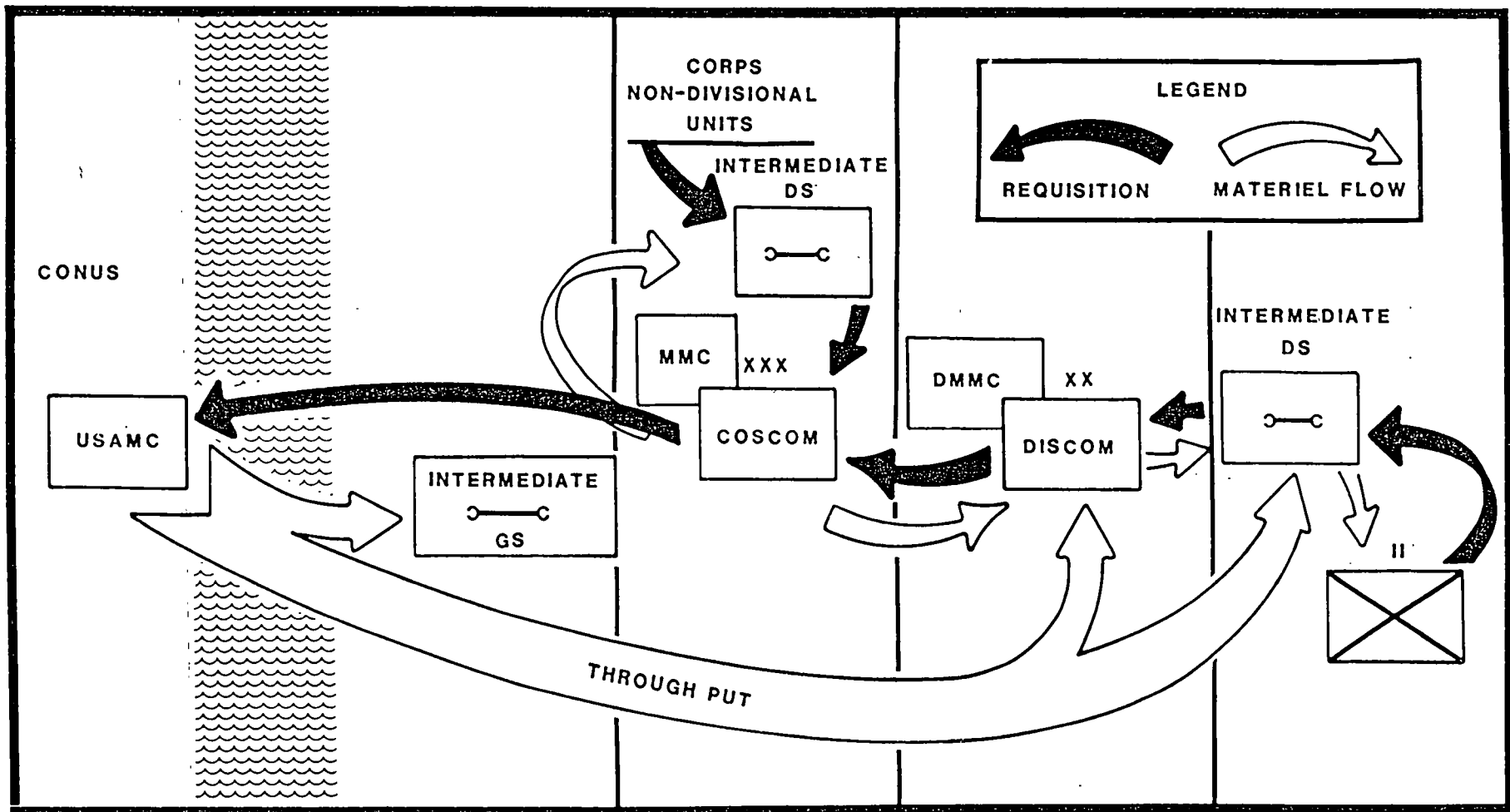
Materiel maintenance managers are authorized for each commodity division. They:

- Plan day-to-day for operations.
- Implement the coordinating staff's policies and plans.

- Develop and apply operating procedures.
- Make continuing analyses of operations.
- Apply corrective action.
- Develop plans and programs to support requirements of the coordinating staff.
- Apply priorities.
- Make management decisions

(2) Each maintenance branch in divisions of the COSCOM MMC exercises management control over the routine maintenance activities and the maintenance collection efforts of units assigned or attached to the COSCOM. The maintenance branches perform routine maintenance management on a day-to-day basis, and collect maintenance data generated by corps units and division materiel management centers (DIMMC). The maintenance branches also receive and use information obtained from equipment and supply branches and the service support division of the MMC as well as from the DMMCs.

ANNISTON ARMY DEPOT	HEAVY COMBAT VEHICLES ANTI-TANK MISSILES SMALL ARMS WEAPONS
LEXINGTON BLUEGRASS DEPOT ACTIVITY.....	COMMUNICATIONS SECURITY EQUIPMENT
CORPUS CHRISTI ARMY DEPOT.....	HELICOPTERS AIRCRAFT ENGINES AND TRANSMISSIONS
ELECTRONIC MATERIEL READINESS ACTIVITY DEPOT.....	STRATEGIC/TACTICAL/SIGNAL INTELLIGENCE/ ELECTRONIC WARFARE EQUIPMENT
LETTERKENNY ARMY DEPOT.....	AIR DEFENSE MISSILES SELF PROPELLED AND TOWED ARTILLERY
MAINZ ARMY DEPOT.....	COMBAT VEHICLES
NEW CUMBERLAND ARMY DEPOT.....	ROTOR BLADES AND HEADS AIR DELIVERY ITEMS
RED RIVER ARMY DEPOT.....	LIGHT COMBAT VEHICLES AIR DEFENSE MISSILES COMBAT RUBBER PRODUCTS
SACRAMENTO ARMY DEPOT	STRATEGIC ELECTRONICS NIGHT VISION EQUIPMENT
SIERRA ARMY DEPOT.....	AMMUNITION
TOBYHANNA ARMY DEPOT	TACTICAL ELECTRONICS CAMERAS AND PROJECTORS AUTOMATIC DIGITAL NETWORK AUTODIN SUPPORT
TOOELE ARMY DEPOT.....	AUTOMOTIVE VEHICLES GENERAL RAIL MATERIALS AUTOMOTIVE RUBBER PRODUCTS HANDLING EQUIPMENT AND CONSTRUCTION ITEMS MOBILE ELECTRIC POWER RED EYE MISSILE TOPOGRAPHIC EQUIPMENT
SENECA ARMY DEPOT.....	AMMUNITION
FORT WINGATE ARMY ACTIVITY.....	AMMUNITION
PUEBLO ARMY DEPOT ACTIVITY.....	PERSHING MISSILE AMMUNITION
UMITALIA ARMY DEPOT ACTIVITY.....	AMMUNITION



REQUEST AND MATERIEL FLOW FOR CLASS IX AND MAINTENANCE RELATED CLASS II SUPPLIES (ALOC)

Flow of maintenance and supply (Class IX) support in the theater

APPENDIX A

REFERENCES

A-1. Department of Defense Directives

- 4000.19 Interservice, Interdepartmental, and Interagency Support
- 4005.1 DOD Industrial Preparedness Production Planning
- 4100.15 Commercial and Industrial-Type Activities
- 4151.1 Use of Contractor and DoD Resources for Maintenance of Materiel
- 5000.1 Major System Acquisitions
- 5010.19 Configuration Management

A-2. Department of Defense Instructions

- 4005.3 Industrial Preparedness Production Planning Procedures
- 4100.33 Operation of Commercial and Industrial-Type Activities
- 4151.15 Depot Maintenance Support Programming Policies
- *7220.29-H Department of Defense Depot Maintenance and Maintenance Support Cost Accounting and Production Reporting Handbook (C)

A-3. Army Regulations

- 1-1 Planning, Programming, and Budgeting within the Department of the Army
- 11-14 Logistic Readiness
- 37-55 Uniform Depot Maintenance Cost Accounting and Production Reporting System
- 37-100-79 The Army Management Structure (AMS)
- 40-61 Medical Logistics Policies and Procedures
- 70-1 Systems Acquisition Policy and Procedure
- 70-10 Test and Evaluation During Development and Acquisition of Materiel
- 70-15 Product Improvement of Materiel
- 70-37 Configuration Management
- 71-2 Basis of Issue Plans (BOIP), Qualitative and Quantitative Personnel Requirements Information (QQPRI)
- 71-3 User Testing
- 71-9 Materiel Objectives and Requirements
- 220-1 Unit Status Reporting
- 310-3 Preparation, Coordination, and Approval of Department of the Army Publications

310-25	Dictionary of United States Army Terms
310-50	Catalog of Abbreviations and Brevity Codes
350-35	Army Modernization Training
(C)381-143	Logistic Policies and Procedures
700-4	Logistic Assistance Program
700-8	Logistics Planning Factor Management
700-9	Policies of the Army Logistics System
700-18	Provisioning of U.S. Army Equipment
700-74	Interservice (Depot) Maintenance Interrogation System (ISMIS)
700-90	Army Industrial Preparedness Program
700-120	Materiel Distribution Management for Major Items
700-126	Basic Functional Structure
700-127	Integrated Logistic Support (ILS)
700-132	Joint Oil Analysis Program (JOAP)
702-3	Army Materiel Systems Reliability, Availability, and Maintainability (RAM)
*702-13	Army Warranty Program
710-1	Centralized Inventory Management of the Army Supply System
750-1	Army Materiel Maintenance Concepts and Policies
750-4	Depot Materiel and Support Training Activities
750-10	Modification of Materiel and Issuing Safety-of-Use Messages and Commercial Vehicle Safety Recall Campaign Directive
750-22	Army Oil Analysis Program
750-25	Army Test, Measurement, and Diagnostic Equipment (TMDE) Calibration and Repair Support Program
750-37	Sample Data Collection: The Army Maintenance Management System
750-43	Test, Measurement, and Diagnostic Equipment
1000-1	Basic Policies for Systems Acquisition

A-4. Department of the Army Pamphlets

11-25	Life-Cycle System Management Model for Army Systems
*738-750	The Army Maintenance Management System (TAMMS)
750-40	Guide to Reality Centered Maintenance (RCM) for Fielded Equipment

A-5. Field Manuals

*38-704	U.S. Army Materiel Development and Readiness Command Logistic Control Activity and its Role in Management of the Army's Supply Distribution Pipeline
*38-725	Direct Support System (Management and Procedures)

*63-3 Combat Service Support Operations-Corps (How to
 Support)
54-10 Logistics: An Overview of the Total System
700-80 Logistics

A-6. Miscellaneous Publications

Office of Management and Budget (OMB) Circular
A-76

APPENDIX B

ACRONYMS

ADP	Automatic Data Processing	DOD	Department of Defense
ALOC	Air Line of Communication	DS	Direct Support
*AMC	Army Materiel Command	DSS	Direct Support System
AMIM	Army Modernization Information Memorandum	DSU	Direct Support Unit
*AMCCOM	U.S. Army Armament Munitions and Chemical Command	DX	Direct Exchange
ASL	Authorized Stockage List	EIR	Equipment Improvement Recommendation
ATLP	Army-Wide Training Literature Program	ERADCOM	U.S. Army Electronics Research and Development Command
*AVCRAD	Aviation Classification Repair Activity Depot	FORSCOM	U.S. Army Forces Command
AVIM	Aviation Intermediate Maintenance	GOCO	Government Owned Contractor Operated
*AVSCOM	U.S. Army Aviation Systems Command	GS	General Support
*AVUM	Aviation Unit Maintenance	GSU	General Support Unit
AWLL	Army Wholesale Logistics Literature	HQDA	Headquarters, Department of the Army
BOI	Basis of Issue	ILS	Integrated Logistic Support
CCSS	Commodity Command Standard System	ILSP	Integrated Logistics Support Plan
CECOM	U.S. Army Communication-Electronics Command	LCMM	Life-Cycle Management Model
COCO	Contractor Owned Contractor Operated	LSA	Logistics Support Analysis
COMMZ	Communications Zone	MAC	Maintenance Allocation Chart
CONUS	Continental United States	MACOM	Major Army Command
COSCOM	Corps Support Command	MFP	Materiel Fielding Plan
*CWO	Conversion Work Order	MICOM	U.S. Army Missile Command
DCSLOG	Deputy Chief of Staff for Logistics	MMC	Materiel Management Center
DESCOM	U.S. Army Depot System Command	MOA	Memorandum of Agreement
DMISA	Depot Maintenance Interservice Support Agreement	MOU	Memorandum of Understanding
DMMC	Division Materiel Management Center	MSC	Major Subordinate Command
DMWR	Depot Maintenance Work Requirement	MWO	Modification Work Order
		*MWOFP	Modification Work Order Fielding Plan
		NET	New Equipment Training
		NETT	New Equipment Training Team
		NICP	National Inventory Control Point
		NMP	National Maintenance Point
		ORF	Operational Readiness Float
		OST	Order and Ship Time

C1, FM 750-80

*PIP	Product Improvement Program	SDS	Standard Depot System
PLL	Prescribed Load Lists	SLAC	Support List Allowance Card
POMCUS	Pre-Positioned Materiel Config- ured to Unit Sets	TACOM	U.S. Army Tank-Automotive Command
PURE	POMCUS Unit Residual Equip- ment	TAMMS	The Army Maintenance Manage- ment System
QDR	Quality Deficiency Report	TMDE	Test, Measurement, and Diagnos- tic Equipment
RAM	Reliability, Availability, and Maintainability	TOE	Table of Organization and Equip- ment
RCF	Repair Cycle Float	TRADOC	U.S. Army Training and Doctrine Command
SAMS	Standard Army Maintenance Sys- tem	*TROSCOM	U.S. Army Troop Support Com- mand
SDC	Sample Data Collection		

☆ U.S. GOVERNMENT PRINTING OFFICE : 1985 O - 479-408 : QL 3

INDEX

This index is organized alphabetically by topic and subtopic. Topics and subtopics are identified by paragraph number.

- Army modernization information memorandum, 3-2a
- Automatic data processing, 2-7
- Commodity command standard system, 2-7e
- Contract maintenance, 2-6, 4-5
- Corps support command, 4-7e
- Depot maintenance
 - Contractor, 4-5
 - Description of, 1-3c(4)
 - Elements of, 4-3
 - In theater, 4-7
 - Operations, 4-2
 - Organic, 4-4
 - Performance of, 4-6
- Depot maintenance interservice agreement, 2-4
- Depot maintenance work requirement
 - In wartime, 4-7d(1)
 - Preparation of, 3-1c(2)
 - Purpose of, 4-6a
- Depot System Command
 - Contract maintenance, 2-6b
 - Mobilization planning, 2-3
 - Responsibilities of, 1-5d
- Deputy Chief of Staff for Logistics
 - Authorizes rebuild, 4-6b
 - Depot maintenance programing, 4-2
- Direct exchange, 2-8e
- Direct support system, 2-8d
- Equipment improvement recommendations, 3-5
- Host nation support, 2-5
- Industrial preparedness, 2-2
 - Contract maintenance, 2-6, 4-5
- Integrated logistics support, 2-1
 - Elements of, 3-1d
 - Maintenance engineering involvement in, 3-1e
 - Plan, 2-1
- Interservice support, 2-4
- Logistics assistance, 3-6
- Maintenance
 - Definition of, 1-3a
 - Levels or categories of, 1-3c
- Maintenance allocation chart, 3-1h
- Maintenance data
 - Depot, 1-5d
 - Sources of, 1-5c(2), 3-4, 3-5, 4-7e(2)
 - Use of, 2-7d, 3-1a, 3-1b
- Maintenance Engineering
 - After system deployment, 3-3
 - Definition of, 1-3c
 - During development, 3-1
 - Materiel fielding, 3-2
- Maintenance Floats, 2-8f
- Maintenance operations
 - Definition of, 1-3c
 - In corps, 4-7e
 - In theater, 4-7
 - Wholesale, 4-1, 4-7
- Materiel Development and Readiness Command
 - Mission of, 1-5a
 - Organization of, 1-5b
- Materiel fielding, 3-2
- Materiel Management Center, 4-7e
- Materiel Readiness Command
 - Identification of, 1-5b(2)
 - Maintenance responsibilities of, 1-5
 - Organization of, 1-5b
- Mobilization
 - Depot maintenance assistance, 4-6g
 - Depot expansion, 4-4a
 - Industrial preparedness, 2-2
 - Materiel activation during, 4-6d
 - Materiel Development and Readiness Command support of, 4-4b
 - Plans, 2-3
 - Pre-positioned materiel configured to unit sets, 2-8c, 4-4b
 - War reserve, 2-8b
- National inventory control point
 - Materiel management, 1-5c
 - Repair parts, 2-8a
- National maintenance point
 - Operational scope of, 1-5c(2)
 - Repair parts, 2-8a
- New equipment training, 3-2b
- Pre-positioned materiel configured to unit sets, 2-8c, 4-4b
- Standard Army maintenance system, 2-7e
- Standard depot system, 2-7e

FM 750-80

Supply

Direct exchange, 2-8e

Direct support system, 2-8d

Floats, 2-8f

Pre-positioning of materiel configured to unit
sets, 2-8c

Repair parts, 2-8a

Support to the maintenance mission, 2-8

Unserviceable materiel, 4-3a

War reserve, 2-8b

By Order of the Secretary of the Army:

JOHN A. WICKHAM, JR.
General, United States Army
Chief of Staff

Official:

ROBERT M. JOYCE
Major General, United States Army
The Adjutant General

DISTRIBUTION:

To be distributed in accordance with DA Form 12-11B, requirements for Installation Logistics Maintenance; Maintenance Management in Theaters of Operations; Logistics Management; Logistics Maintenance Management; Logistics Management Controls; Logistics Materiel Development Management; Command and Staff Supply and Maintenance Procedures; Logistics, Installation Logistics Management and The Theater Army Support Command.





SLS

Pages

S/S by CH I
1 Aug 1985

*FM 750-80

FIELD MANUAL

No. 750-80

HEADQUARTERS
DEPARTMENT OF THE ARMY
WASHINGTON, DC, 1 September 1983

ARMY WHOLESALE MAINTENANCE MANAGEMENT

Effective support of our fighting forces requires a coordinated maintenance system. Neither the wholesale nor retail communities can provide support in isolation from the other. This manual illustrates wholesale maintenance and the wholesale/retail interface.

CHAPTER		Paragraph	Page
1.	INTRODUCTION		
	Purpose	1-1	1-1
	Recommended Changes	1-2	1-1
	Explanation of Terms	1-3	1-2
	The Wholesale Maintenance Mission	1-4	1-4
	Organization For Wholesale Maintenance Management ..	1-5	1-4
2.	PLANNING FOR WHOLESALE MAINTENANCE SUPPORT		
	General	2-1	2-1
	Industrial Preparedness	2-2	2-1
	Depot Maintenance Mobilization Plans	2-3	2-2
	Interservice Support	2-4	2-2
	Host Nation Support	2-5	2-3
	Contract Maintenance	2-6	2-3
	Automation	2-7	2-4
	Supply Relationships	2-8	2-5
3.	MAINTENANCE ENGINEERING		
	Maintenance Engineering During Development	3-1	3-1
	Materiel Fielding	3-2	3-4
	Maintenance Engineering After System Deployment	3-3	3-6
	Performance Data	3-4	3-7
	Equipment Improvement Recommendations (EIR)	3-5	3-7
	Logistics Assistance	3-6	3-8
4.	WHOLESALE MAINTENANCE OPERATIONS		
	General	4-1	4-1
	Depot Maintenance Operations	4-2	4-1
	Elements of Depot Maintenance	4-3	4-1
	Organic Facilities	4-4	4-2
	Contractor Facilities	4-5	4-4
	Depot Maintenance Performed	4-6	4-6
	Wholesale Maintenance in the Theater of Operations	4-7	4-7
APPENDIX A	REFERENCES		A-1
APPENDIX B	ACRONYMS		B-1
INDEX		Index-1



CHAPTER 1

INTRODUCTION

1-1. Purpose and Scope

The purpose of this manual is to establish wholesale materiel maintenance management doctrine for the Active Army, Army Reserve, and Army National Guard. AR 700-9 defines logistics doctrine as "A collection of the best thinking the Army has to offer on how to perform a particular combat service support in wartime." Consequently, the intent of this publication is to provide information about wholesale maintenance which will be useful in planning for and providing support in time of war. Commanders, staff officers, logisticians, and nonlogisticians alike need to know how wholesale maintenance supports the Army's combat strength. This doctrine is for use in war and contingency planning, logistics planning, and force modernization, as well as in improving everyday operations.

THIS MANUAL PROVIDES THE DOCTRINE FOR LOGISTICIANS TO PLAN TO OPERATE IN WAR JUST AS WE DO IN PEACE.

1-2. Recommended Changes

a. Since changes in doctrine are continually occurring, users of this field manual are encouraged to make comments and recommend changes which will enhance the technical quality of this document.

b. When changes are recommended, all comments should be directed to the specific page, paragraph, and line of the text. To insure understanding and accurate evaluation, it is requested that reasons for a change be provided for each comment. Comments should be submitted on DA Form 2028 (Recommended Changes to Publications and Blank Forms) and forwarded directly to the Commandant, United States Army Logistics Management Center, ATTN: DRXMC-MR-MM, Fort Lee, Virginia 23801.

**MAINTENANCE IS:
SUSTAINING
RESTORING
UPGRADING**

**MAINTENANCE OPERATIONS =
PERFORMANCE
INSPECTION
TESTING
SERVICING
CLASSIFICATION
RECLAMATION
REPAIR
OVERHAUL
REBUILD
MODIFICATION
CONVERSION
CALIBRATION
RENOVATION**

1-3. Explanation of Terms

a. Materiel maintenance is the function of sustaining materiel in an operational status, restoring it to a serviceable condition, or updating and upgrading its functional usefulness through modification and product improvement. The maintenance function includes varied types of activities performed by many different organizational elements. The ultimate goal of these organizations is to create and sustain combat readiness in the Army. Because maintenance activities are so diverse, they can be categorized in many different ways. A basic method of identifying maintenance, both corrective and preventive, is to divide it into two subfunctions: maintenance engineering and maintenance operations.

b. Maintenance engineering is that activity of materiel maintenance which develops concepts, criteria, and technical requirements during the materiel acquisition process. After acquisition, maintenance engineering activities continue to insure timely, effective, and economical maintenance support.

c. Maintenance operations constitute the actual physical performance of maintenance and the management of such performance. Maintenance operations are generally divided into four levels or categories: organizational, direct support (DS), general support (GS), and depot, as addressed in AR 750-1. These levels of maintenance identify the scope of the operation which may be performed at various command levels. The responsibility for the performance at a given level is assigned to a unit in consonance with its primary mission, degree of mobility, intended availability of personnel, skills, and materiel resources. The collective objectives of these levels are to make materiel fully mission capable.

(1) Organizational maintenance is the preventive and corrective maintenance performed by a using unit on its own equipment.

(2) DS maintenance units provide direct support to the user by repairing and returning materiel directly to the user.

(3) GS maintenance units perform those maintenance actions required to support a force as a whole, rather than specific elements. It performs maintenance which exceeds the capability or capacity of the associated DS units and repairs and returns equipment to the supply system.

(4) Depot maintenance is the highest level of maintenance, performing those tasks which cannot be performed at a lower level. It supports the overall DA inventory management program and performs GS maintenance when GS units experience exceptional workloads beyond their capacities.

(5) An exception to the above is aviation maintenance. The three levels of aviation maintenance are aviation unit maintenance (AVUM), aviation intermediate maintenance (AVIM), and aviation depot maintenance.

d. Retail maintenance is the maintenance activity performed at the GS, DS, and organizational levels of maintenance, both in the Continental United States (CONUS) and overseas. This activity may be in support of contingency operations, an established theater of operations, or a deployable unit or command.

e. Wholesale maintenance is that maintenance activity which is performed above the retail levels. The depot level of maintenance provides wholesale maintenance operations. The US Army Materiel Development and Readiness Command (DARCOM) is responsible for managing wholesale maintenance management. Its headquarters directs the activities of depots, arsenals, and test facilities used in wholesale maintenance. The DARCOM major subordinate commands (MSC) develop, procure, distribute and support Army systems. Organizations outside DARCOM have wholesale maintenance responsibility for some specialized commodities.

DSU = REPAIR & RETURN TO USER

GSU = REPAIR & RETURN TO SUPPLY SYSTEM

**RETAIL MAINTENANCE:
ORGANIZATIONAL
DS
GS**

**WHOLESALE MAINTENANCE:
MAINTENANCE ENGINEERING
DEPOT OPERATIONS**

1-4. The Wholesale Maintenance Mission

Wholesale maintenance has but one purpose—to sustain combat readiness of US and Allied forces. This purpose is achieved by:

- Providing a system for the maintenance of Army materiel systems.
- Determining where, when, how, why, and by whom maintenance actions must be taken.
- Using maintenance data during system development to lessen the maintenance requirement and after system fielding to improve maintenance performance.
- Conducting depot maintenance.
- Providing maintenance assistance to retail maintenance organizations.

Wholesale maintenance responsibilities are consolidated to take advantage of centralized management, which results in an efficiency of operations not possible otherwise.

1-5. Organization for Wholesale Maintenance Management

Army wholesale maintenance addresses the Army maintenance system above the retail level. Wholesale maintenance responsibility resides within such Army agencies as:

- The Surgeon General
- USA Intelligence and Security Command (INSCOM)
- The Chief of Engineers
- DA Deputy Chief of Staff for Logistics (DCSLOG)
- DARCOM

a. *DARCOM.* The DARCOM is a major Army command (MACOM). It has materiel life-cycle responsibility. Functions of DARCOM include formulating the materiel portions of the DA program and executing approved programs; providing integrated commodity management comprising:

- Research, development, and modification.
- Developmental testing and evaluation.
- Maintenance support planning, including personnel, training, manuals, repair parts, tools, test equipment, and modifications or product improvements.
- Technical and engineering supervision and services, including technical advisory service, product engineering, production engineering, maintenance engineering, and human factors engineering.
- Army provisioning technical and functional policy and implementation for initial and follow-on support.
- Product assurance.
- Value engineering.
- Procurement and production.
- Integrated materiel inventory management.
- Materiel and industrial mobilization planning, contingency planning, and maintenance of mobilization reserves and production base.
- Management of the DA equipment publications program and preparation or acquisition of equipment publications.
- Technical direction and management of the depot maintenance program.
- Transportation, transportability, and transportation engineering.
- Development of and recommendation to Headquarters, Department of the Army (HQDA) new and improved concepts, doctrine systems, and procedures for wholesale logistics operations.
- Management and control of working capital funds.
- Development of automated wholesale logistics systems that interface with Army and other retail logistics systems as well as other DOD wholesale systems.
- Conduct of specialized training of personnel in the materiel area, to include new equipment training (NET).

- Management of the DARCOM portion of the Army-Wide Training Literature Program (ATLP); i.e., preparation of Army wholesale logistics literature (AWLL).

b. Organization of DARCOM. DARCOM is comprised of the headquarters, its MSCs, and various other activities and installations.

(1) DARCOM has assigned materiel readiness responsibility to designated MSCs under its control. These designated MSCs are responsible for the integrated management of their commodities. Integrated management includes:

- Research
- Development
- Design
- Modification
- Sponsorship of tests and evaluation
- Initial repair parts planning
- Tools, test equipment and handling equipment planning
- Technical and engineering supervision and services
- Product engineering
- Production engineering
- Cataloging and standardization
- Direction of procurement and production
- Materiel inventory management
- Mobilization planning
- Production base planning
- Preparation of equipment publications
- New equipment training

(2) The materiel readiness commands are:

- US Army Armament Materiel Readiness Command (ARRCOM)—armament systems and ammunition.
- US Army Communications-Electronics Command (CECOM)—communications-electronics systems
- US Army Missile Command (MICOM)—missiles, rockets, and lasers.
- US Army Tank-Automotive Command (TACOM)—tracked and wheeled combat, tactical,

and general-purpose vehicles, selected construction and materials handling equipment.

- US Army Troop Support and Aviation Materiel Readiness Command (TSARCOM)—field support items, aircraft, amphibious vehicles, and watercraft.

(3) Research and development (R&D) commands. These commands are responsible for the research, development, and acquisition of specified commodities. The R&D commands are:

- US Army Armament Research and Development Command (ARRADCOM)—armament systems and ammunition.
- US Army Aviation Research and Development Command (AVRADCOM)—aircraft.
- US Army Electronics Research and Development Command (ERADCOM)—electronic equipment.
- US Army Mobility Equipment Research and Development Command (MERADCOM)—mobility/counter-mobility, survivability, energy, and logistics equipment.

c. MSC Organization for Maintenance.

(1) *General.* The organization of a particular MSC within DARCOM is somewhat dependent upon the peculiarities of the support structure of the assigned commodity. The following are the functional elements common to MSCs regardless of commodity:

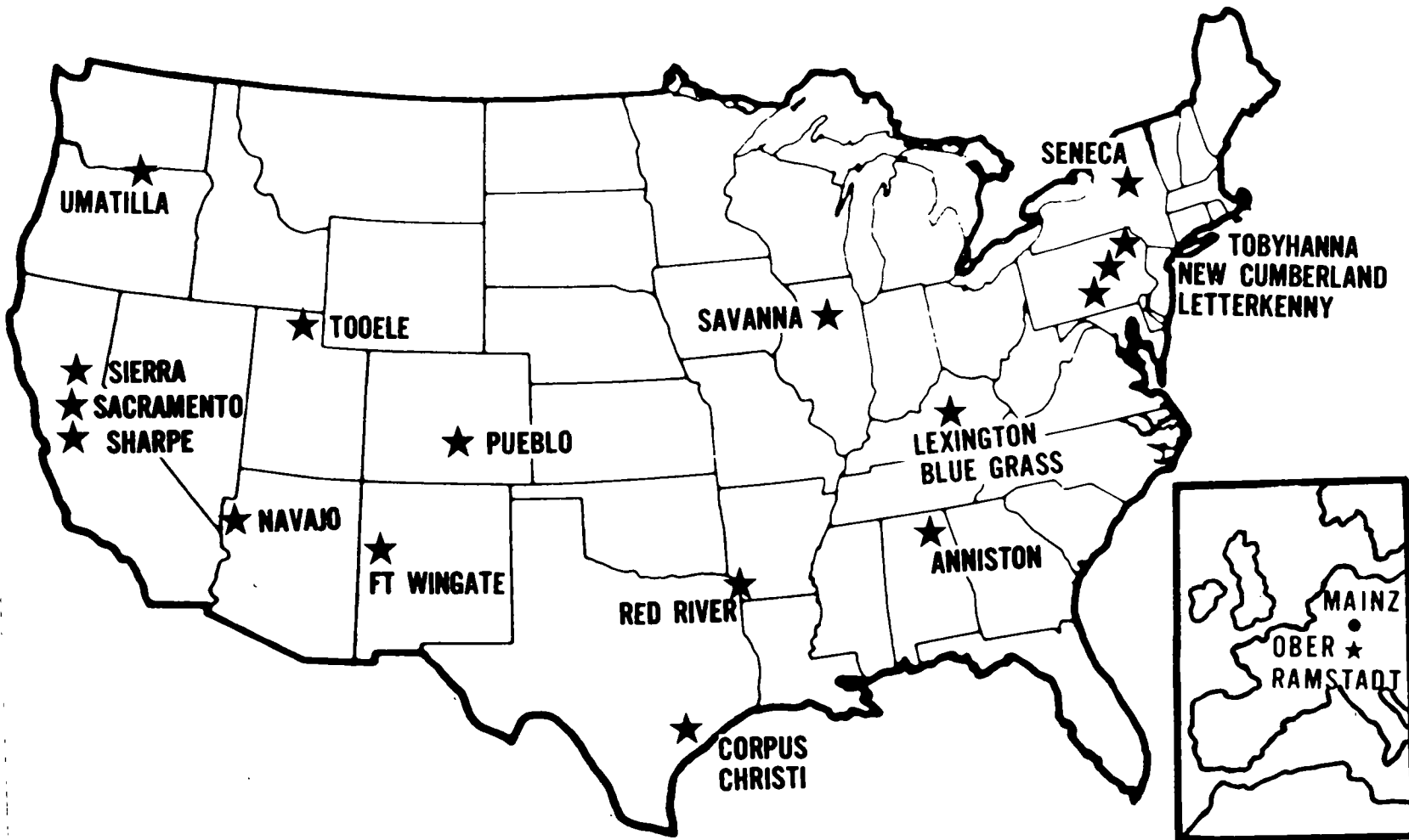
- Maintenance
- Materiel Management
- Procurement and production
- Project Managers
- Special Staff
- International Logistics
- Resources Management
- Product Assurance
- Personnel Training and Force Development
- Plans and Systems Analysis
- Management Information Systems
- Field Liaison/Services

The coordination of the above elements is critical. With respect to maintenance, the MSCs have two directors who coordinate and supervise the majority of maintenance engineering and depot maintenance operations. They are the Director for Maintenance, responsible for the National Maintenance Point (NMP) and the Director for Materiel Management, responsible for the National Inventory Control Point (NICP).

(2) *Scope of NMP Operations.* The NMP plays a vital role in system/item development and operation. Through maintenance engineering, design characteristics and support concepts are built into a new system. The NMP continues to track the system throughout its life cycle, gathering operational performance data and modifying the system as needed. The NMP is the key to the success of the DARCOM maintenance management program. Even though its activities are influenced to a considerable degree by the requirements of the NICP, the NMP has maintenance responsibility and Army worldwide technical responsibility for a specific commodity or group of commodities. Additionally, the NMP is responsible for providing Army depots with working-level direction relative to the maintenance support required for its items. This technical control is normally provided by a Depot Maintenance

Work Requirement (DMWR). The scope of the responsibilities of the NMP in maintenance management extends from the early conceptual stages of materiel through the design, development, procurement, production, deployment, use, and disposal stages. Specifically, the major functions of an NMP are in the areas of maintenance engineering, support planning, publications, and technical assistance. Therefore, the responsibilities of the NMP for the particular item or commodity continue throughout its life cycle. The operations of the NMP and NICP must be closely coordinated to insure that adequate technical and administrative resources required to meet the needs of the equipment user and the maintenance support elements are available.

d. *US Army Depot System Command (DESCOM).* DESCOM is responsible for the command and control of assigned US Army depots and depot activities. Depot missions are receipt, storage, issue and maintenance of assigned commodities. DESCOM manages the use of funds, manpower, physical plants and equipment required for depot maintenance worldwide. The information needed to manage depot maintenance operations is consolidated in a DESCOM data bank. This data bank is a source of data for reports to higher headquarters.



DARGOM organization for maintenance



1
1



SDS provide an automated means to ascertain actual overhaul consumption data to be used by depots in acquiring repair parts. In an effort to eliminate the use of various command-unique maintenance systems, the Standard Army Maintenance System (SAMS) is being implemented. When fully implemented, SAMS will provide an automated, uniform, standard maintenance system that is responsive to each level of command from the user, through the retail and wholesale levels to the national level.

2-8. Supply Relationships

The maintenance and supply systems are closely linked, since the output of one affects the other. All levels of maintenance are customers of the supply system. Also, all levels of maintenance place materiel back into the hands of the user. At the wholesale level maintenance is considered a source of supply.

a. Repair Parts. The NMP responsible for an item predicts requirements for repair parts. Using those predictions, the NICP plans to make parts available.

(1) *Retail.* Recommended initial repair parts stockages are established based on provisioning data developed during Logistics Support Analysis (LSA) on new equipment. Data generated based on the maintenance concept, failure factors, essentiality or safety factors are used to establish recommended support list allowance card (SLAC) decks which propose stockage at prescribed load list (PLL) and authorized stockage list (ASL) levels. These PLLs and ASLs are critical in supporting the maintenance mission to provide materiel readiness. A sufficient quantity must be stocked to be compatible with resupply operations, but it must not limit the unit's mobility or otherwise interfere with performance of the mission.

(2) *Wholesale.* The NICP supplies repair parts for depot maintenance based upon historical usage data and engineering data developed by the NMP.

b. War Reserves. War reserves provide the interim support essential to sustain operations until industry can meet all post D-day consumption. War reserves are used for:

- Filling post D-day combat consumption requirements.
- Replacing mobilization training losses.
- Issue to mobilization units.

c. Pre-Positioned Materiel Configured to Unit Sets (POMCUS). POMCUS is a set of equipment stored in the theater in the proper quantities for immediate issue to a particular deployable unit. It is not a war reserve asset. It also differs from normal theater war reserves, in that POMCUS stores the unit's equipment in one location. War reserves are generally stored by commodity, rather than by unit. POMCUS stocks are maintained to be as ready to issue as possible, achieving a high degree of readiness. This is crucial in today's "come-as-you-are" environment.

d. Direct Support System (DSS).

(1) The DSS is a theater-oriented depot to general support/direct support unit (GSU/DSU) supply system. It uses high-speed communication and air and sea shipments direct from designated Continental United States (CONUS) theater-oriented depots to a DSU/GSU overseas. DSS in wartime is restricted to air line of communication (ALOC) class IX supply (repair parts) and selected class II items (clothing and individual equipment). Broad objectives of DSS are to increase supply efficiency, responsiveness, and asset visibility while decreasing inventories and time lags in the supply pipeline. Specific objectives of DSS are:

- More efficient use of resources.
- Improvement of requisition response time and reduction of inventory without degradation of materiel readiness.
- Reduced order and ship time (OST).

- In-transit asset visibility and control.
- More efficient use of communication and transportation techniques.
- Shipment containerization.
- Reduction of stockage vulnerability to air or nuclear attack.

(2) Although some oversea inactive depot stockage is retained (war reserve, safety level, and operational project stocks), most support unit supply requirements are met by direct delivery from CONUS depots, bypassing oversea theater depots and break bulk points.

e. Direct Exchange (DX).

(1) DX is the exchange of an unserviceable reparable module (from the user) for a serviceable one (from the DX activity). Such a module is an item assembly, subassembly, board/card, or component designated as a single unit to facilitate and simplify production line techniques, transportation, supply, and maintenance. A standardized DX system establishes Army-wide policy guidance and management techniques for those supply and maintenance actions essential in the execution of the DX program for reparable/recoverable modules in an efficient, responsive, and cost-effective manner.

(2) DX procedures allow a user to obtain serviceable modules from a supporting DX activity with minimum paperwork and administrative burden; this, in turn, frees the user from detailed piece-part repairs and excessive parts stockage.

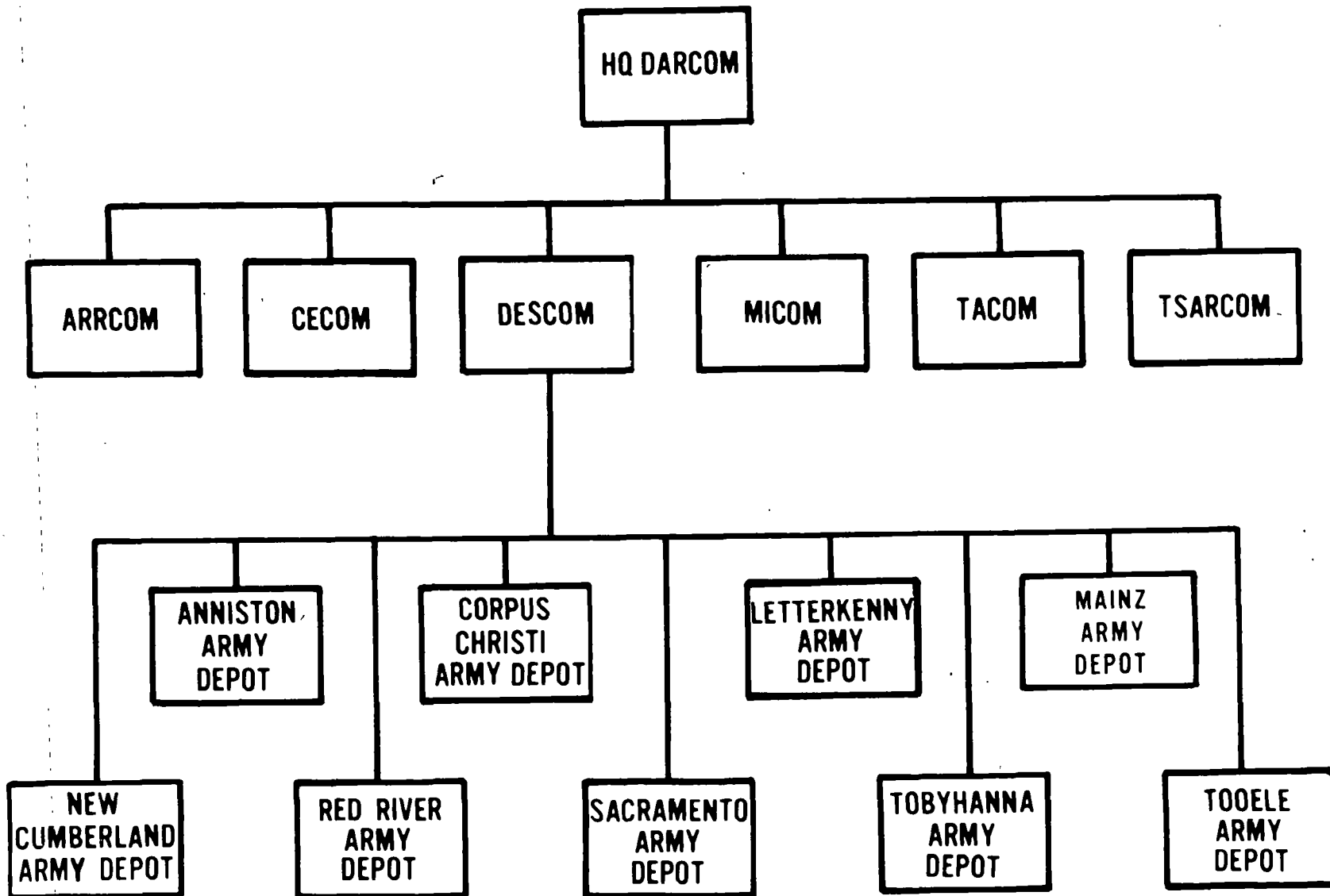
(3) The objectives of DX include:

- Improve operational readiness.
- Establish a standardized system integrated into the Army supply system which incorporates simplified administration and accounting, based on a one-for-one exchange.
- Provide one-stop support for all DX modules.
- Establish stockage levels of essential DX modules at each DX point.
- Obtain total asset visibility of both unserviceable and serviceable recoverable modules on hand from DS to wholesale logistics levels.
- Provide for a single issue system for recoverable coded materiel in each exchange loop.
- Establish DX loops between organizational and DS and between DS and GS levels of maintenance.

f. Maintenance Floats. Float is a quantity of selected items of equipment authorized to replace like items evacuated for maintenance. One primary purpose of the float is to maintain the operational readiness of supported units. There are two types of float: repair cycle float (RCF) and operational readiness float (ORF).

(1) RCF is a quantity of items authorized for stockage at the wholesale level of the supply system. It is used to replace items undergoing scheduled depot maintenance.

(2) ORF is a quantity of selected equipment authorized for stockage at DS activities to replace like reparable items evacuated from using units for support-level maintenance which cannot be completed within specified time limits.



US Army depots and depot activities

nance work forces as soon as possible during mobilization.

(2) Limiting Factors in Expansion. Limited facilities, tools, and test equipment will cause delays in increasing the Army's industrial strength during mobilization. Plant equipment or other equipment stored as war reserve will be used as required, but many items will not be obtainable for months or years, under the best conditions.

b. DARCOM Support to Mobilized Forces.

(1) During the early stages of a contingency, forces supported by prepositioned materiel configured to units sets (POMCUS) depart the CONUS and are transported to the sites of their respective equipment. Selected forces then mobilize at predetermined locations throughout CONUS and are outfitted with the equipment remaining after departure of the POMCUS units.

(2) This equipment, called POMCUS Unit Residual Equipment (PURE) must be made ready for deployment as rapidly as possible. The installation maintenance activity provides a concerted effort to perform the maintenance required to make equipment combat ready. Expeditious supply support to such mobilization centers is provided by DARCOM.

(3) While it is not anticipated that extensive depot-level maintenance will be accomplished, an assessment of component repair at the depot level is required in order that contingency plans can be developed to insure that depot facilities can be activated on short notice. This capability, coupled with the technical assistance available from the depot level, will expedite mobilized units achieving the desired state of readiness for deployment.

4-5. Contractor Facilities

a. General. Just as the wholesale system relies on

civilian industry for procurement of new items, the resources of industry are also available for maintenance contracts. It is the policy of the Government to rely to the maximum practicable extent on the free competitive private enterprise system for required products or services. Only under certain circumstances will the Government obtain its products or services from organic sources. The reasons for this policy are well established; local and national economies are influenced by Government facilities displacing private industry. A healthy private industrial base is important for economic reasons, but more importantly, it represents a key source of industrial capability. DA does not intend to provide organic capacity to perform all the wartime workload. On the contrary, the intent is to provide whatever capability is required, organic or contract, to complete the wartime requirement. Organic depot maintenance capability and capacity are established and sustained on the basis of workloads generated by weapon systems and equipment that are essential to the accomplishment of the Army's mission.

b. Uses for Contract Maintenance. Contract depot maintenance is used in the following situations:

- Depot maintenance requirements exceed the military capability and capacity retained to support mission-essential materiel.
- Depot maintenance is required for support of commercial equipment and nontactical elements. This is true only if performance of such work is not required for military effectiveness, personnel training, or rotation and career development of Army personnel.
- Interim contractor support is required to provide a smooth transition to the acquisition of an organic support capability.

ANNISTON ARMY DEPOT _____	HEAVY COMBAT VEHICLES ANTI-TANK MISSILES SMALL ARMS WEAPONS
CORPUS CHRISTI ARMY DEPOT _____	HELICOPTERS AIRCRAFT ENGINES AND TRANSMISSIONS
LETTERKENNY ARMY DEPOT _____	AIR DEFENSE MISSILES SELF PROPELLED AND TOWED ARTILLERY
MAINZ ARMY DEPOT _____	COMBAT VEHICLES
NEW CUMBERLAND ARMY DEPOT _____	CH-47 HELICOPTER ROTOR BLADES AND HEADS AIR DELIVERY ITEMS
RED RIVER ARMY DEPOT _____	LIGHT COMBAT VEHICLES AIR DEFENSE MISSILES COMBAT RUBBER PRODUCTS
SACRAMENTO ARMY DEPOT _____	STRATEGIC ELECTRONICS NIGHT VISION EQUIPMENT
TOBYHANNA ARMY DEPOT _____	TACTICAL ELECTRONICS CAMERAS AND PROJECTORS AUTOMATIC DIGITAL NETWORK AUTODIN) SUPPORT
TOOELE ARMY DEPOT _____	AUTOMOTIVE VEHICLES GENERAL RAIL MATERIALS AUTOMOTIVE RUBBER PRODUCTS HANDLING EQUIPMENT AND CONSTRUCTION ITEMS

US Army depot maintenance missions

4-6. Depot Maintenance Performed

a. Overhaul is the highest level of maintenance normally performed on Army equipment. It is accomplished based upon specific criteria, detailed in a written document, which is usually a Depot Maintenance Work Requirement (DMWR). Overhaul returns an unserviceable item to a completely serviceable condition but, in most cases, not a "like new" condition. Overhaul may be performed less frequently in wartime than peacetime due to the urgency of returning materiel to battle in the most expeditious manner. This possibility is dependent upon how urgently the item is needed in the combat area, estimated time to overhaul, and the probability that a lesser degree of maintenance will be effective in keeping the item in service.

b. Rebuild is action taken to restore equipment to the original manufacturer's specifications. It exceeds overhaul in complexity and expense, but does not necessarily offer greater reliability characteristics than overhaul. Therefore, even though the ability to perform rebuild may exist, it is not normally done. In certain situations, however, rebuild may be prudent for other reasons such as safety in the case of medical materiel. Rebuild can be performed only upon authorization of DA DCSLOG.

c. Conversion is the alteration of the basic characteristics of an item to such an extent as to change its mission and performance capability and to result in a change in model designation. Performance of conversions will be curtailed during wartime and limited to those extremely urgent conversions which are immediately necessary for enhancing the fighting capability of combat units. Such conversions will be performed whether or not they can be performed in conjunction with overhaul. Most conversions scheduled in peacetime are not urgent enough to be required in wartime.

d. Activation is the depreservation, servicing, inspection, testing, and other related maintenance ac-

tions required to return a stored or inactive item to operational use. This operation is of utmost importance during mobilization, as items are removed from storage and issued to mobilizing units or to units experiencing combat losses.

e. Modification is the alteration of an item which does not change the basic characteristics of an item to such an extent as to change its mission or performance capability and to result in a change in model designation as does a conversion. Only the most critical modifications are considered to warrant the expenditure of resources during wartime. Any modifications deserving attention in wartime must relate directly to a deficient combat capability.

f. Repair is the specified maintenance required to correct materiel damage and to restore the item to required serviceability standards. It includes maintenance performed at DS and GS levels by depot maintenance personnel. During wartime, depot personnel may perform repair much more frequently than during peacetime. The requirement to repair equipment quickly and return it to combat sometimes precludes the performance of overhaul, and requires that repair be limited to those repair actions necessary.

g. Depot maintenance assistance is the use of qualified depot maintenance personnel to perform onsite maintenance requiring those skills and equipment normally restricted to depot-level operations. This is one of the more important roles of depot-level maintenance during the mobilizing stages of military conflict. Depot-level maintenance augments the maintenance capability of the retail system during mobilization, in that depot skills and equipment are made available onsite to perform depot-level tasks. This assistance is available to all Active Army, Army Reserve, and Army National Guard units which are preparing to fulfill their combat missions.

h. Depot technical assistance is onsite assistance of a technical nature which is limited to providing information, instruction, and guidance. No actual maintenance task is performed by the assisting party.

i. Manufacture is the fabrication of an item by application of labor and/or machines to materiel. Depot capability exists to manufacture many items, mostly repair parts; this capability is restrained during peacetime due to the diseconomy of such operations when compared to private industry and its continuous production lines. During wartime, however, for selected parts, depot fabrication will be used to the maximum extent required. This does not, however, relieve the requirement to plan in advance for sufficient quantities and timely production from private industry. Depot fabrication is not a cure for improper planning, but rather an appropriate source of manufacture under crisis conditions.

j. Reclamation is the authorized processing of items to obtain parts or components that are to be retained in the inventory prior to taking disposal action on the remaining items. Depots take such action after authorization by the NICP of the responsible MSC or other inventory manager. During wartime, reclamation will in some cases be a very important source of repair parts, in those cases where nonreparable equipment possesses parts which are urgently needed somewhere in the supply system. Most of such work is performed by the retail maintenance system, but when nonreparable items are inadvertently returned to the depot system, it is performed there.

k. Renovation is the test, evaluation, and rework of ammunition and special materiel required to retain the desired readiness capability.

4-7. Wholesale Maintenance in the Theater of Operations

a. General. Wholesale maintenance is oriented

toward supporting a theater of operations or a contingency force anywhere in the world. The most immediate assistance required of wholesale maintenance is that supplied by the depot level of maintenance. Depot maintenance has a responsibility to return serviceable items to the wholesale supply system, but in time of war has an immediate and urgent responsibility to return items quickly to a theater in support of military operations. The necessity of wholesale maintenance operations maintaining a presence in the theater is derived from the nature of today's battlefield. Among the factors influencing the situation are:

- Lack of warning prior to initiation of hostilities.
- Intensity of combat.
- Immediate heavy losses of men and materiel.
- Limited inventories of materiel.
- Abundance of combat-essential components not reparable at retail levels.
- Lack of efficiency of retail levels of maintenance caused by the extreme demands of mobility.

b. Relationship Between Wholesale Maintenance Operations and the Theater.

(1) The peacetime existence of wholesale maintenance in the theater must continue in wartime. Transfer of a mission from the wholesaler to the theater during the transition to war or during early war, under most conditions, is not acceptable.

(2) Written agreement must exist between the wholesaler and the theater commander, to clearly delineate the functions for which each is responsible. This agreement may be a memorandum of understanding (MOU), memorandum of agreement (MOA), support agreement, any other appropriate agreement, or a combination of these. Agreements include provisions for the mutual support of the wholesaler and the theater in peacetime, transition, and wartime. The agreement includes:

- Scope of maintenance to be performed by the wholesaler.

- Identification of the equipment to be maintained.
- Facilities to be provided by the theater.
- Arrangements for all contractor support, whether host nation or United States.
- Responsibility for establishing priorities and directing the distribution of repaired materiel.
- Clear delineation of the responsibility for wholesaler and theater functions.
- Provisions for any other mutual support required during peacetime, transition, and war.

(3) Command, control, and supervision of wholesale personnel, operations, and missions are the responsibility of the wholesaler. The theater commander establishes and prioritizes his requirement, but the how and where of meeting that requirement is the responsibility of the wholesaler. Under certain conditions, however, responsibility for wholesale maintenance is shared with the theater, or in time of sufficient emergency, absorbed entirely by the theater. The circumstances in which command and control of wholesale elements transfers to the theater is delineated in written agreement.

c. Location of Wholesale Maintenance Operations.

(1) A contingency force may have no need for extensive wholesale maintenance outside the CON-US. Wholesale support may be limited to technical assistance or maintenance teams having limited goals and missions of short duration. A fully developed theater, however, may require extensive wholesale support and depot maintenance capability in the communications zone (COMMZ). Wholesale maintenance involving civilians, whether DA, host nation, or contractor, are not deployed forward of the rear corps boundary, except for specific missions of limited duration.

(2) Existing sites of wholesale maintenance operations are continued in wartime as long as possible. Alternate sites, preplanned during peacetime,

are used when changing wartime conditions so dictate.

(3) Wholesale maintenance operations require protection, as they are a vital element in providing combat sustainability. Provisions must be taken to provide protection, as the fixed facilities are extremely vulnerable to detection and attack. At the discretion of the wholesaler and in coordination with the theater, wholesale facilities may be placed in the COMMZ, offshore, or in a third country.

d. Scope of Depot Maintenance. Depot maintenance performs in wartime the minimum maintenance required to make equipment mission capable.

(1) In wartime, overhaul is not performed to the extent required by a DMWR. Not-mission-capable items are made mission capable, but not necessarily capable of performing fully every element of every mission for which they were designed. In short, long-term reliability of equipment may be sacrificed in favor of short-term operational capability. This entails, however, a need for the wholesaler to identify those maintenance actions which can be neglected or modified under emergency conditions. The extent of overhaul is dictated by the urgency with which equipment is needed in combat. This attitude parallels the concept of applying minimum essential maintenance only (MEMO) to the retail maintenance of materiel.

(2) When necessary, depot maintenance elements perform GS maintenance, including repair, to assist in returning materiel to combat. This is accomplished in fixed facilities as necessary, but the preferred attitude is one of forward support, to complement the forward orientation of retail support levels. Whenever feasible, GS maintenance required of depot organizations is performed onsite.

e. Maintenance in the Corps.

(1) The materiel management center (MMC) of the corps support command (COSCOM) accom-

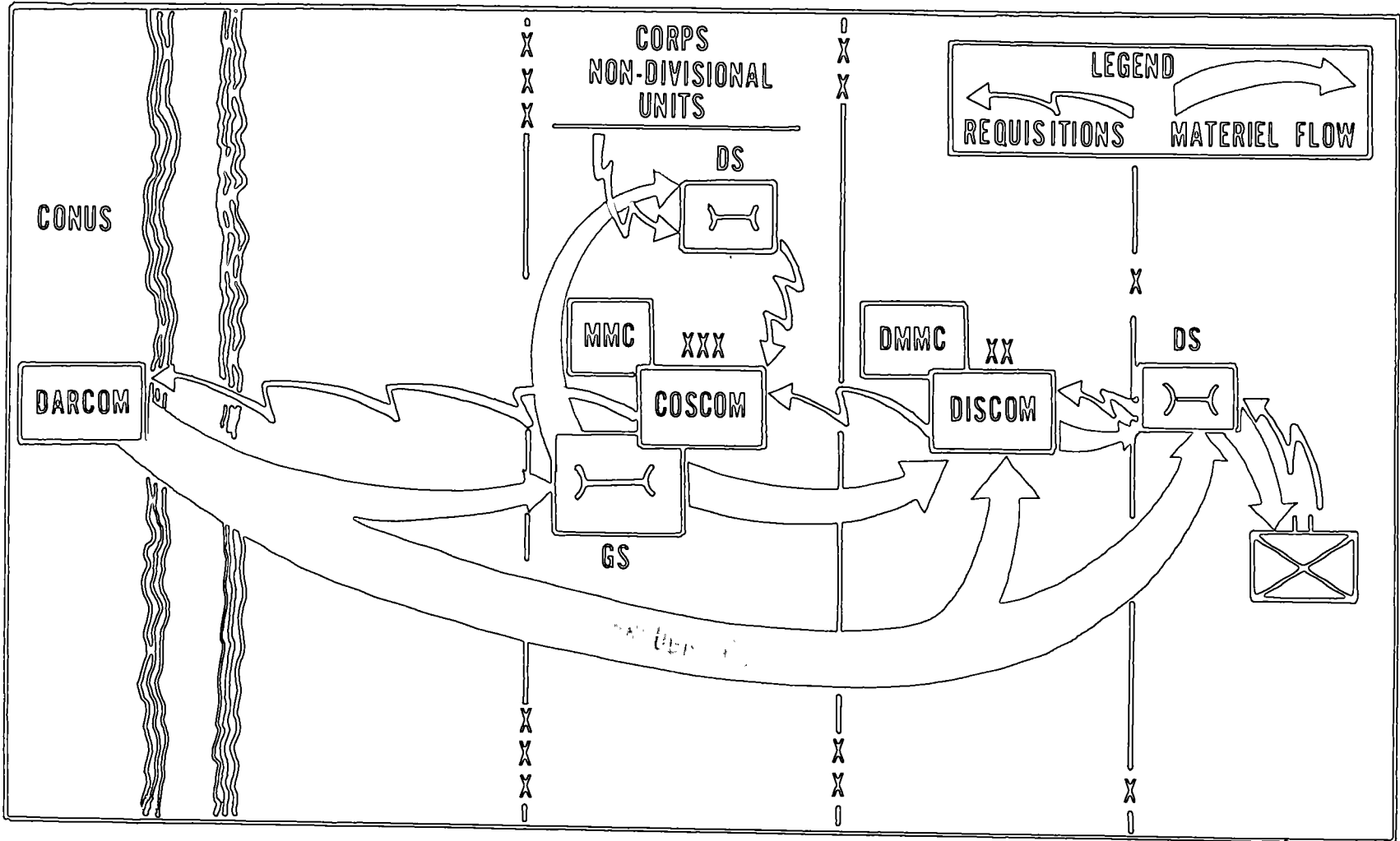
plishes integrated maintenance and supply support in a theater of operations. The COSCOM MMC provides the interface between the wholesale logistics level (NICP/NMP) and the supported forces. The MMC discharges day-to-day materiel management responsibilities under a concept of centralized management and decentralized operations. Acting on the requirements of supported forces, the MMC places supply demands on the Theater Army MMC (if more than one corps) or CONUS-based NICPs of DARCOM, the Defense Logistics Agency, and the General Services Administration. The MMC may also meet support demands through local procurement and by redistributing supplies and maintenance assets within the command.

Materiel maintenance managers are authorized for each commodity division. They:

- Plan day-to-day for operations.
- Implement the coordinating staff's policies and plans.

- Develop and apply operating procedures.
- Make continuing analyses of operations.
- Apply corrective action.
- Develop plans and programs to support requirements of the coordinating staff.
- Apply priorities.
- Make management decisions.

(2) Each maintenance branch in divisions of the COSCOM MMC exercises management control over the routine maintenance activities and the maintenance collection efforts of units assigned or attached to the COSCOM. The maintenance branches perform routine maintenance management on a day-to-day basis, collect maintenance data generated by corps units and division materiel management centers (DMMC). The maintenance branches also receive and use information obtained from equipment and supply branches and the service support division of the MMC as well as from the DMMCs.



Flow of maintenance and supply (Class IX) support in the theater



APPENDIX A

REFERENCES

A-1. Department of Defense Directives

4000.19	Interservice, Interdepartmental and Interagency Support
4005.1	DOD Industrial Preparedness Production Planning
4100.15	Commercial and Industrial-Type Activities
4151.1	Use of Contractor and Government Resources for Maintenance of Materiel
4151.16	DOD Equipment Maintenance Program
5000.1	Major System Acquisitions
5010.19	Configuration Management

A-2. Department of Defense Instructions

4005.3	Industrial Preparedness Production Planning Procedures
4100.33	Operation of Commercial and Industriales Governing Maintenance Engineering within the Department of Defense
4151.15	Depot Maintenance Support Programming Policies

A-3. Army Regulations

1-1	Planning, Programing, and Budgeting within the Department of the Army
1-35	Basic Policies and Principles for Interservice, Interdepartmental, and Interagency Support
11-14	Logistics Readiness
37-55	Uniform Depot Maintenance Cost Accounting and Production Reporting System
37-100-8X	The Army Management Structure (AMS)
40-61	Medical Logistics Policies and Procedures
70-1	Army Research, Development, and Acquisition
70-10	Test and Evaluation During Development and Acquisition of Materiel
70-15	Product Improvement of Materiel
70-37	Configuration Management
71-2	Basis of Issue Plans
71-3	User Testing
71-9	Materiel Objectives and Requirements
220-1	Unit Status Reporting

- 310-3 Preparation, Coordination, and Approval of Department of the Army Publications
- 310-25 Dictionary of United States Army Terms
- 310-50 Catalog of Abbreviations and Brevity Codes
- 350-35 New Equipment Training
- (C) 381-143 Logistic Policies and Procedures
- 700-4 Logistic Assistance Program
- 700-8 Logistics Planning Factor Management
- 700-9 Policies of the Army Logistics System
- 700-18 Provisioning of US Army Equipment
- 700-74 Interservice (Depot) Maintenance Interrogation System (ISMIS)
- 700-90 Army Industrial Preparedness Program
- 700-120 Materiel Distribution Requirement for Major Items
- 700-126 Basic Functional Structure
- 700-127 Integrated Logistic Support (ILS)
- 700-132 Joint Oil Analysis Program (JOAP)
- 702-3 Army Materiel Reliability, Availability, and Maintainability (RAM)
- 710-1 Centralized Inventory Management of the Army Supply System
- 750-1 Army Materiel Maintenance Concepts and Policies
- 750-4 Depot Materiel and Support Training Activities
- 750-10 Modification of Materiel and Issuing Safety-of-Use Messages
- 750-22 Army Oil Analysis Program
- 750-25 Army Metrology and Calibration System
- 750-25-1 Army Test, Measurement, and Diagnostic Equipment (TMDE) Calibration and Repair Support Program
- 750-37 Sample Data Collection: The Army Maintenance Management System (TAMMS)
- 750-43 Test, Measurement, and Diagnostic Equipment
- 1000-1 Basic Policies for Systems Acquisition

A-4. Department of the Army Pamphlets

- 11-25 Life Cycle System Management Model for Army Systems
- 750-40 Guide to Reliability Centered Maintenance (RCM) for Fielded Equipment

A-5. Field Manuals

- 38-8 International Logistics Management
- 54-7 Theater Army Logistics
- 54-9 The Corps Support Command

54-10 Logistics: An Overview of the Total System

700-80 Logistics

A-6. Technical Manuals

38-710 Integrated Logistic Support: Implementation Guide for DOD
Systems and Equipment

A-7. Miscellaneous Publications.

Office of Management and Budget (OMB) Circular A-76



APPENDIX B

ACRONYMS

ADP	Automatic Data Processing	DOD	Department of Defense
ALOC	Air Line of Communication	DS	Direct Support
AMIM	Army Modernization Information Memorandum	DSS	Direct Support System
ARRAD-COM	US Army Armament Research and Development Command	DSU	Direct Support Unit
ARRCOM	US Army Armament Materiel Readiness Command	DX	Direct Exchange
ASL	Authorized Stockage List	EIR	Equipment Improvement Recommendation
ATLP	Army-Wide Training Literature Program	ERADCOM	US Army Electronics Research and Development Command
AVIM	Aviation Intermediate Maintenance	FORSCOM	US Army Forces Command
AVRAD-COM	US Army Aviation Research and Development Command	GOCO	Government Owned Contractor Operated
AWLL	Army Wholesale Logistics Literature	GS	General Support
BOI	Basis of Issue	GSU	General Support Unit
CCSS	Commodity Command Standard System	HQDA	Headquarters, Department of the Army
CECOM	US Army Communications-Electronics Command	ILS	Integrated Logistics Support
COCO	Contractor Owned Contractor Operated	ILSP	Integrated Logistics Support Plan
COMMZ	Communications Zone	INSCOM	US Army Intelligence and Security Command
CONUS	Continental United States	LCMM	Life-Cycle Management Model
COSCOM	Corps Support Command	LSA	Logistics Support Analysis
DARCOM	US Army Materiel Development and Readiness Command	MAC	Maintenance Allocation Chart
DCSLOG	Deputy Chief of Staff for Logistics	MACOM	Major Army Command
DESCOM	US Army Depot System Command	MERAD-COM	US Army Mobility Equipment Research and Development Command
DMISA	Depot Maintenance Interservice Support Agreement	MFP	Materiel Fielding Plan
DMMC	Division Materiel Management Center	MICOM	US Army Missile Command
DMWR	Depot Maintenance Work Requirement	MMC	Materiel Management Center
		MOA	Memorandum of Agreement
		MOU	Memorandum of Understanding
		MSC	Major Subordinate Command
		MWO	Modification Work Order

FM 750-80

NET	New Equipment Training	SDC	Sample Data Collection
NETT	New Equipment Training Team	SDS	Standard Depot System
NICP	National Inventory Control Point	SLAC	Support List Allowance Card
NMP	National Maintenance Point	TACOM	US Army Tank-Automotive Command
ORF	Operational Readiness Float	TAMMS	The Army Maintenance Management System
OST	Order and Ship Time	TMDE	Test, Measurement, and Diagnostic Equipment
PLL	Prescribed Load Lists	TOE	Tables of Organization and Equipment
POMCUS	Pre-Positioned Materiel Configured to Unit Sets	TRADOC	US Army Training and Doctrine Command
PURE	POMCUS Unit Residual Equipment	TSARCOM	US Army Troop Support and Aviation Materiel Readiness Command
QDR	Quality Deficiency Report		
RAM	Reliability, Availability, and Maintainability		
RCF	Repair Cycle Float		
SAMS	Standard Army Maintenance System		

3000031551



1
2
3
4
5
6
7
8
9
10
11
12
13
14
15
16
17
18
19
20
21
22
23
24
25
26
27
28
29
30
31
32
33
34
35
36
37
38
39
40
41
42
43
44
45
46
47
48
49
50
51
52
53
54
55
56
57
58
59
60
61
62
63
64
65
66
67
68
69
70
71
72
73
74
75
76
77
78
79
80
81
82
83
84
85
86
87
88
89
90
91
92
93
94
95
96
97
98
99
100



PENTAGON LIBRARY

3000031551