

MHI
Copy 3

FM 54-2

DEPARTMENT OF THE ARMY FIELD MANUAL

DIVISION LOGISTICS AND THE SUPPORT COMMAND



HEADQUARTERS, DEPARTMENT OF THE ARMY
DECEMBER 1961

FIELD MANUAL }
 No. 54-2 }

HEADQUARTERS,
 DEPARTMENT OF THE ARMY
 WASHINGTON 25, D.C., 20 December 1961

DIVISION LOGISTICS AND THE SUPPORT COMMAND

	Paragraphs	Page
CHAPTER 1. GENERAL	1-3	3
2. DIVISION LOGISTICS		
Section I. General	4-7	6
II. Division support command	8-11	10
III. Brigade trains	12-15	12
IV. Battalion trains	16-19	15
V. Company trains	20, 21	19
CHAPTER 3. ORGANIZATION OF DIVISION SUPPORT COMMAND		
Section I. Headquarters company and band, division support command.	22-24	20
II. Administration company	25-27	21
III. Medical battalion	28-30	22
IV. Supply and transport battalion	31-33	23
V. Maintenance battalion	34-36	24
VI. Air equipment support company (airborne division only).	37-39	26
CHAPTER 4. EMPLOYMENT OF DIVISION SUPPORT COMMAND		
Section I. General	40, 41	28
II. Staff	42, 43	29
III. Field installations	44-48	30
IV. Organization of the division support command for combat.	49-51	37
V. Communications	52	38
VI. Rear area security	53-56	40
VII. Area damage control	57-59	42
CHAPTER 5. DIVISION LOGISTICAL SUPPORT PROCEDURES		
Section I. Supply	60-67	44
II. Administrative transportation	68-70	55
III. Field maintenance	71-74	58
IV. Medical service	75, 76	63
V. Miscellaneous services	77-79	65

	Paragraphs	Page
CHAPTER 6. LOGISTICAL SUPPORT FOR SPECIAL OPERATIONS		
Section I. Airborne operations.....	80	69
II. Situations short of war.....	81, 82	69
III. Operations against irregular forces.....	83, 84	70
APPENDIX I. References.....		72
II. Rear Area Security SOP.....		76
III. Area Damage Control SOP.....		81

CHAPTER 1

GENERAL

1. Purpose

This manual establishes doctrine and guidance for logistical support within the division and for the employment of the division support command. It is designed for the use of division commanders and their staffs, division support command commanders and their staffs, and other commanders and staff officers concerned with logistical support within army divisions.

2. Scope

a. This manual covers the activities of all division logistical support units and the division support command headquarters to include the control, organizations, capabilities, limitations, procedures, and techniques of employment in support of airborne, armored, infantry, and mechanized division operations. Detailed functions and procedures pertaining to logistical support elements of division combat and combat support units and subordinate units of the division support command for each type division are covered in separate field manuals (app. I).

b. Division level logistical support for which the division support command is responsible includes—

- (1) Supply.
- (2) Transportation for administrative support operations (less transportation for class V in infantry, mechanized, and armored divisions).
- (3) Field maintenance.
- (4) Medical service.
- (5) Miscellaneous services.

c. Division level personnel and administrative service support is provided by the administration company and its elements. Details of this support are covered in FM 12-11, FM 61-100 and FM 101-5.

d. Recommended changes or comments to improve this manual should be forwarded direct to U.S. Army Command and General Staff College on DA Form 1598.

e. This manual defines responsibilities for division rear area security and for area damage control as assigned to the division support command commander in FM 61-100.

f. The basic material applies to logistical support operations under all conditions of conflict and all forms of warfare except where specifically stated.

g. This manual is designed for use with other manuals (app. I). Logistical support of special operations is discussed only in general terms in this manual.

h. Throughout this manual the references made to combat battalions or companies apply equally to armored cavalry squadrons and troops.

3. Basic Considerations

a. The division support command is a major subordinate unit at the same echelon as the brigades and division artillery. It is organized functionally to provide division level logistical support.

b. The support command for each of the divisions is designed to support a specific number and type of combat battalions. The composition of the division support command varies in the supply, transport, and maintenance elements according to the type division it is designed to support. Any significant change in number or type of battalions may require an adjustment in the logistical support capability of the division support command.

c. The division support command can provide logistical support elements for attachment to brigades for independent or semi-independent operations of limited duration. When the support command is fragmented in this manner, corps or army support troops may be required to augment the remainder of the support command.

d. The support command commander is the logistical operator for the division and is responsible to the division commander for accomplishing the division logistical plan. The support command commander has normal command authority over all subordinate units of his command except the administration company. The support command commander has tactical control of the administration company, but is not responsible for its operations. The functions of the administration company are performed under the general staff supervision of the G1.

e. The brigades of the division are tactical echelons and do not normally enter logistical channels. However, the brigade commander commands the attached logistical support units and moni-

tors the brigade logistical support operations to insure adequate support of tactical operations. As necessary, brigade recommends to division adjustments in the logistical support units attached to or in support of brigade. The division attaches logistical means to brigades to support independent or semi-independent brigade operations.

f. The battalions of the division have organic logistical elements and normally receive direct logistical support from the division support command.

CHAPTER 2

DIVISION LOGISTICS

Section I. GENERAL

4. Logistical Responsibilities of All Commanders

a. Each commander is responsible for the logistical support of his organic and attached units. He is familiar with and considers the logistical situation within his command at all times.

b. The commander makes his policies, concepts, and decisions known to his logistical personnel in order to insure a coordinated and adequate logistical effort in support of his operations.

c. The commander plans and conducts his logistical support operations with the same care used in planning and conducting tactical operations.

d. Logistical units and lines of communication are vulnerable and require protection from enemy action.

e. The economical use and conservation of logistical resources is a direct responsibility of each commander. He indoctrinates his subordinates so that supply economy is practiced by all members of his command.

f. All commanders are always responsible for keeping those units supporting them completely informed on matters which will affect their support requirements; these include location and relocation plans, tactical plans which will affect requirements and anticipated changes in strength.

5. Logistics Staff Officers (G4/S4)

a. To assist in the exercise of logistical responsibilities, the commander has a logistics staff officer: the assistant chief of staff, G4, at division level, and the S4 at brigade, division artillery, support command, and battalion level. The logistics staff officer is responsible to his commander for developing logistical policy, planning, staff coordination, and staff supervision of the logistical effort.

b. The logistics staff officer's staff responsibilities are described in FM 101-5.

6. Logistical Operations in Chemical, Biological, and Nuclear Warfare

a. Logistical Planning. Chemical, biological, and nuclear warfare conditions will require increased emphasis on the following:

- (1) Plans for alternate methods of supply, medical evacuation, and service support.
- (2) Achievement of balance between the need for increased movement and dispersion and the ability to perform the mission.
- (3) Continuation of logistical support if such support is curtailed by damage to logistical support elements.
- (4) Possible increases in basic loads.
- (5) Plans to augment the logistical capability by the addition of units, such as chemical decontamination units, engineer units, and aviation units.
- (6) Provisions for rapid augmentation or movement of medical units, timely emergency treatment, and evacuation of large numbers of patients.
- (7) Traffic control to increase the speed of movement and to prevent development of potential targets resulting from traffic congestion.
- (8) Plans for rehabilitation of critical routes as soon as possible after their damage.

b. Logistical Units and Facilities. The basic consideration governing the location of logistical units and their facilities is the requirement to accomplish their missions. Another consideration is the enemy's capability to employ chemical, biological, and nuclear weapons. Related to this enemy capability is the need for dispersion, and frequent relocating of operational areas. The extent of dispersion and the frequency of relocating will vary directly with the ability of the enemy to locate targets and radius of damage expected from the enemy's largest tactical nuclear weapon or his chemical and biological weapon capability, reconciled with the necessity for the unit to accomplish its mission, the degree of risk acceptable to the commander, and the requirement for defense against enemy infiltrators and guerrilla units. A further consideration in the location of logistical facilities is their relationship to other potential nuclear targets. Locating near tactical units increases ground security, but may create an attractive nuclear target.

- (1) *Dispersion.* The dispersion within a logistical unit or facility may be the same under nuclear and nonnuclear conditions. Ideally, logistical units or facilities are dis-

persed throughout an area to minimize possible destruction of more than one facility by a single weapon.

- (2) *Defensibility.* Maximum defensive measures are taken to insure minimum interruption in logistical operations. All service personnel maintain their proficiency in the use of individual and crew-served weapons. Even though service elements within a division support or trains area may be widely dispersed, each is prepared to provide its own protection and still operate under adverse conditions. Passive defensive measures, such as dispersion, movement, concealment, cover, camouflage, and deception, are employed to reduce detection and thereby reduce the effectiveness of strikes by enemy nuclear, chemical, and biological weapons. Frequent displacement is an excellent passive defensive measure, but it reduces the efficiency of logistical support operations. Unit standing operating procedures (SOP) prescribe passive defensive measures for personnel, materiel, and installations.

c. Operational Procedures. To insure continuity of command, unit SOP and orders provide for alternate logistical command facilities for each major logistical support element. Logistical units and facilities remain responsive to change. They are able to move with minimum advance notice. This state of readiness requires maximum on vehicle stowage of equipment not in use and detailed contingency plans.

7. Organization for Combat

a. The composition and employment of the logistical elements of the division are dictated by the mission, tactical situation, administrative support situation, and time-distance factors.

b. Organic, attached or supporting logistical elements are organized into groupments to provide supply, medical services, maintenance, and administrative transportation for units of the division.

c. The major logistical groupments in the division are the support command, the brigade trains, battalion trains, and company trains. For a typical employment of logistical elements see figure 1. The battalion and company trains are divided into combat trains and field trains.

- (1) Combat trains consist of supply, medical, and maintenance vehicles and personnel and equipment necessary for the immediate logistical support of combat operations.

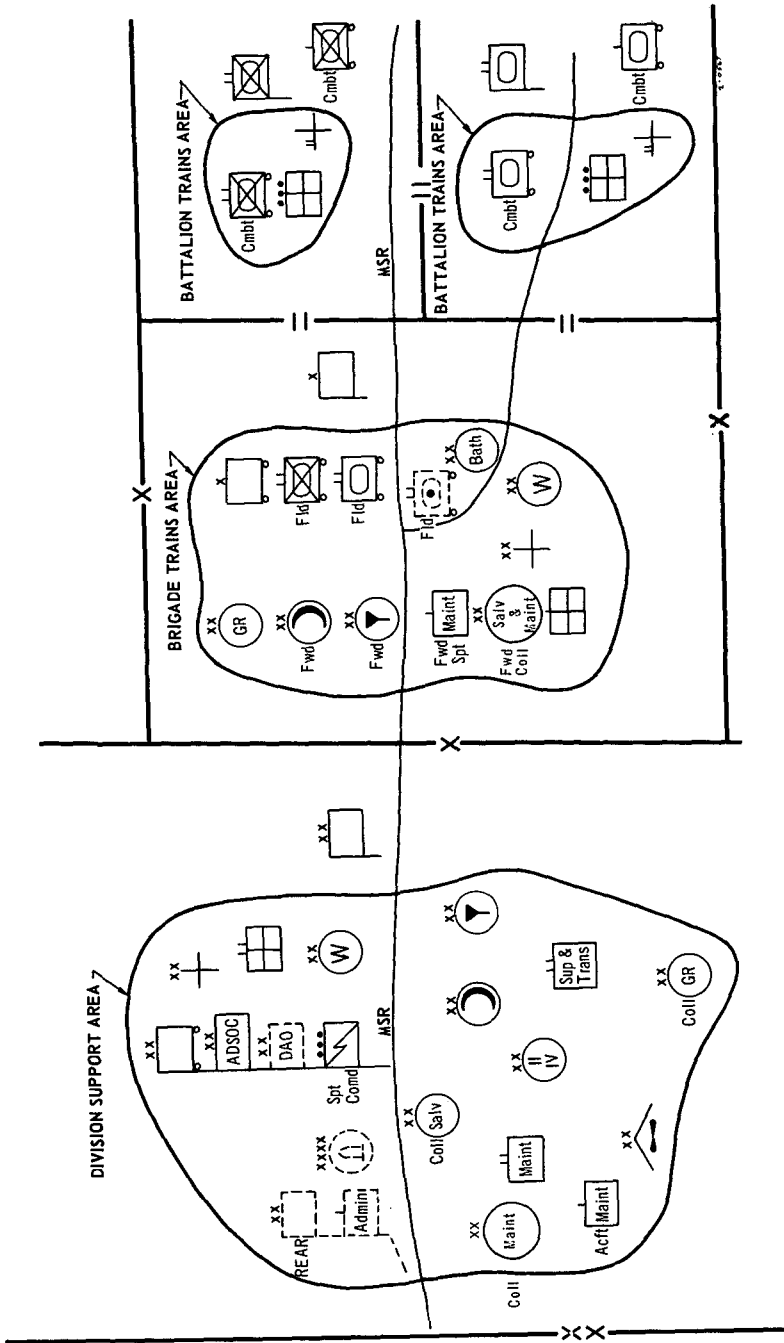


Figure 1. Typical deployment of division logistical units and facilities.

- (2) Field trains consist of administrative, supply, medical, and maintenance vehicles and personnel and equipment not in the combat trains and not required for the immediate support of combat operations.

Section II. DIVISION SUPPORT COMMAND

8. Mission

The division support command provides division level logistical support to all assigned or attached elements of the division.

9. Organization

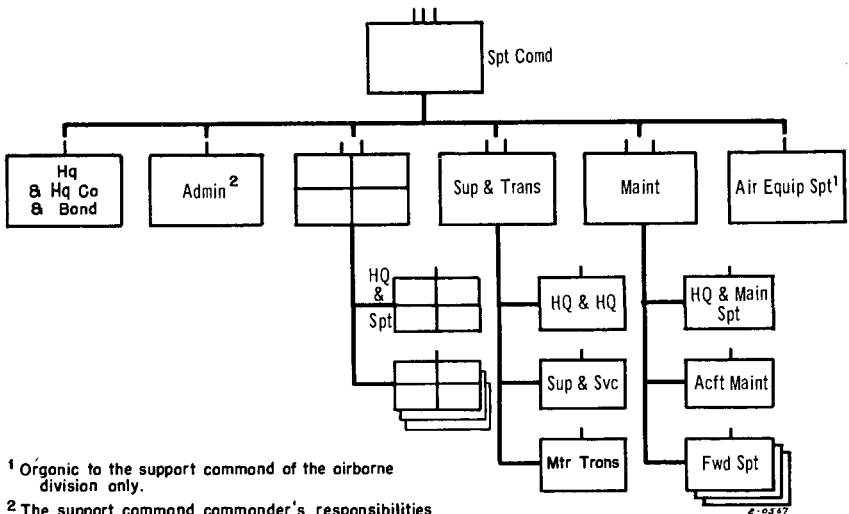
Organization of the division support command is shown in figure 2.

10. Capabilities

The division support command provides :

a. Division level logistical support to include storage and distribution of classes I, II, III, and IV supplies and control of class V supply. In the airborne division the support command provides storage and distribution of limited class V supplies.

b. Third echelon maintenance support, except for medical and cryptographic items.



¹ Organic to the support command of the airborne division only.

² The support command commander's responsibilities are limited to tactical, security and movement aspects.

Figure 2. Division support command.

c. Division level medical service support to include evacuation of patients, treatment (including emergency dental), medical supply, and organizational maintenance.

d. A limited capability to carry division reserve supplies for independent or semi-independent division missions.

e. Bath facilities for the division.

f. Advice to the division commander and the division staff on quartermaster, ordnance, and transportation operations and on all supply and maintenance matters except cryptographic.

g. Graves registration service to the division, when properly augmented.

h. Air equipment supply and maintenance support to the airborne division.

11. Employment

a. The support command provides logistical support on an area basis, a task basis or a unit support basis.

(1) Area support is furnished by an administrative support unit to all the units located within a designated geographical locale.

(2) Task support is furnished by an administrative support unit for only a specified type or quantity of its services to designated units or areas.

(3) Unit support is furnished by an administrative support unit to a designated unit or group of units.

b. Normally the division support command elements employ a combination of unit and area support with unit support as the foundation. The division support command supports each brigade with supply, service, medical, and maintenance elements tailored to meet the brigade need (par. 47).

c. A division support area is established to service units in the division rear area and to provide backup logistical support for support command units operating in the brigade areas (par. 44).

d. The support command may operate an administrative support operation center (ADSOC) to coordinate, regulate, and expedite logistical support in the division (par. 43). The support command command post and its ADSOC when established are normally located in the division support area. In fast-moving situations or widely dispersed actions, elements of the support command and its ADSOC may operate forward of the division support area to insure that continuous logistical support is provided the

combat elements. For details of employment of the division support command see chapter 4.

Section III. BRIGADE TRAINS

12. Mission

The brigade trains provide logistical support to units attached to or in support of brigade. In addition, the division support command units operating as a part of brigade trains normally provide logistical support to other units or elements operating in or near the brigade area.

13. Organization

The brigade trains consist of elements of the brigade S4 section, field trains of attached or supporting units, (basically, battalion field trains) elements of the division support command attached to or in support of the brigade, and, on occasion, other combat, combat support, and logistical support elements operating in the vicinity of the brigade. The composition varies with the tactical disposition of units and their logistical support requirement. The brigade trains area is that geographical area occupied by the brigade trains.

14. Capabilities

The following logistical support services are normally available in the brigade trains area:

- a. Third echelon maintenance.
- b. All classes of supply to include water.
- c. Division medical clearing station.
- d. Recovery and evacuation of damaged and captured material and salvage.
- e. Graves registration service.
- f. Bath facilities.

15. Employment

a. *General.* Units located in the brigade trains area are under the tactical control of brigade. Higher echelon logistical support units not attached to brigade but operating within the brigade trains area perform their primary mission under the control of their parent units. The brigade S4 monitors the operations of the logistical support elements operating in the brigade trains area through the division administrative communications net and

by personal liaison to insure that continuous and adequate logistical support is provided brigade units. The brigade S4 operates in the logistical support system only when necessary or requested to provide this support. The brigade trains normally displace under the control of the brigade S4. The brigade S4 continually studies the tactical situation and makes recommendations for movement of the brigade trains to facilitate support of the tactical operation. Upon receiving movement instructions, the brigade S4 coordinates with the brigade S3, reconnoiters the routes to the new area, assigns areas to the various elements of the trains, and issues the order for movement. The order is usually oral.

b. Control Procedures.

- (1) Supply trucks are dispatched from the brigade trains area by the battalion S4's. Empty trucks of the battalion combat trains return to the battalion field trains in the brigade trains area and report to their respective battalion support platoon leaders. The composition of the battalion trains and supplies they carry are directed by the battalion commander upon the recommendation of the battalion S4.
- (2) In supply point distribution, vehicles dispatched by the brigade S4 either infiltrate or are formed into convoys to draw supplies from division distributing points or army supply facilities. The brigade S4 designates the convoy commander and, if necessary, arranges for convoy protection. When possible, a vehicle with a radio accompanies the convoy to provide continuous communication. At the division distributing or army supply facilities, the vehicles load and return to the battalion field trains in the brigade trains area. From his location, the trucks are either dispatched to their respective battalion combat trains or become part of the battalion field trains, as directed by the battalion S4.
- (3) Classes I and III supplies are normally delivered to the battalion from the division classes I and III forward distributing points located in the brigade trains area by the supply and transport battalion. Delivery is made by division supply and transport battalion vehicles to the forward distributing points. The brigade S4 designates the specific area for these distributing points. He also coordinates the delivery of supplies so that congestion at the distributing points is minimized. Classes II and IV supplies are delivered to the class I forward distributing point or directly to the requesting unit. Class

V is procured from army ammunition supply points with battalion transportation.

- (4) Each battalion support platoon leader keeps the brigade S4 informed of the number of trucks in battalion field trains, the loads on the trucks, and the battalion supply situation in general.
- (5) Battalion logistics reports are normally channeled through the brigade S4 and forwarded to the division support command without consolidation. This procedure provides the brigade with logistical information and expedites the forwarding of reports.

c. Offense. In general, brigade trains are kept as far forward as practicable.

- (1) *Fast-moving situations.* In an exploitation, envelopment, or similar fast-moving situation, the brigade trains closely follow the combat elements. If it becomes necessary to halt, they usually occupy the center of the brigade defensive area. Control is vital in this type of operation.
- (2) *Slow-moving situations.* In a slow-moving situation, such as a strongly opposed penetration, the brigade trains move by bounds. If brigades are moving in column, the tactical elements of the second brigade often have road priority over the trains of the leading brigade. This restricts the movement of the trains of the leading brigade and requires careful coordination by the division staff and the two brigades.

d. Defense. In defensive action, trains are usually held farther to the rear than in offensive operations, and the bulk of the battalion trains are normally in the brigade trains area.

- (1) *Mobile defense.* In the mobile defense, brigade trains are so located in the defensive sector that logistical activities do not interfere with tactical operations. The nature of the terrain, enemy situation, size of the defensive sector, security of the trains, and scheme of maneuver for this type of operation influence the positioning of the brigade trains. For protection the trains may be located near elements of the reserve. Supply convoys or MSR's often require tactical protection. The logistical plan for the mobile defense is designed to change quickly from support of a defensive operation to support of a full scale offensive.
- (2) *Area defense.* In the area defense, the brigade trains are located well to the rear, normally out of range of light

artillery. In this type of defense where the situation is relatively stable, the combat battalions can stock sufficient supplies to permit replenishment during periods of reduced visibility only. Support command logistical elements may furnish support from the division support area by sending contact teams to the brigade rather than locating with brigade trains. Normally only the battalion aid station and elements of the battalion maintenance platoon are retained in the battalion combat trains. The remainder of the battalion trains are in the brigade trains area.

e. Retrograde Operations. A retrograde movement requires detailed tactical and logistical support plans, the execution of which is carefully controlled and supervised by each responsible commander. The size of the trains with the combat units is held to a minimum. The location and movement of logistical units are carefully planned so as not to interfere with the movements of the combat units.

- (1) *Withdrawal.* Whenever possible the brigade trains displace to the rear before the combat elements begin their rearward movement. On occasion it is necessary for elements of the brigade trains to remain forward with the tactical elements to provide immediate support.
- (2) *Delaying action.* Protection and control are particularly important in the delaying action. The brigade trains normally withdraw to the rear of the next delaying position early, preferably during hours of darkness. Stockpiling on positions helps provide adequate supply. The battalions normally retain only the battalion aid station and elements of the battalion maintenance platoon in their combat trains. During this type of operation, the brigade trains are very large, and the brigade S4 insures that sufficient road space is allotted to move the trains. When the brigade trains are not moving, they are dispersed to reduce vulnerability to nuclear attack.
- (3) *Retirement.* The logistical support for a retirement is identical with that normal to a tactical march.

Section IV. BATTALION TRAINS

16. Mission

The battalion trains provide continuous logistical support to the battalion and its attachments.

17. Organization

a. *General.* All battalion or battalion task force trains contain a battalion support platoon, a maintenance platoon, and battalion medical section or platoon. Battalion trains units and shown in figure 3.

b. *Support Platoon.* The support platoon is organized with a platoon headquarters, a transportation section, a battalion supply section, and a battalion mess section.

- (1) *Transportation section.* The transportation section is organized and equipped with the personnel and trucks required to transport supplies from supporting supply or distributing points to the companies of the battalion.
- (2) *Supply section.* The supply section is organized and equipped to receive supply requests, except for repair parts, from the companies and prepare and forward battalion requisitions to the supply and transportation battalion. Upon receipt of supplies, this section stores and distributes the supplies within the battalion.

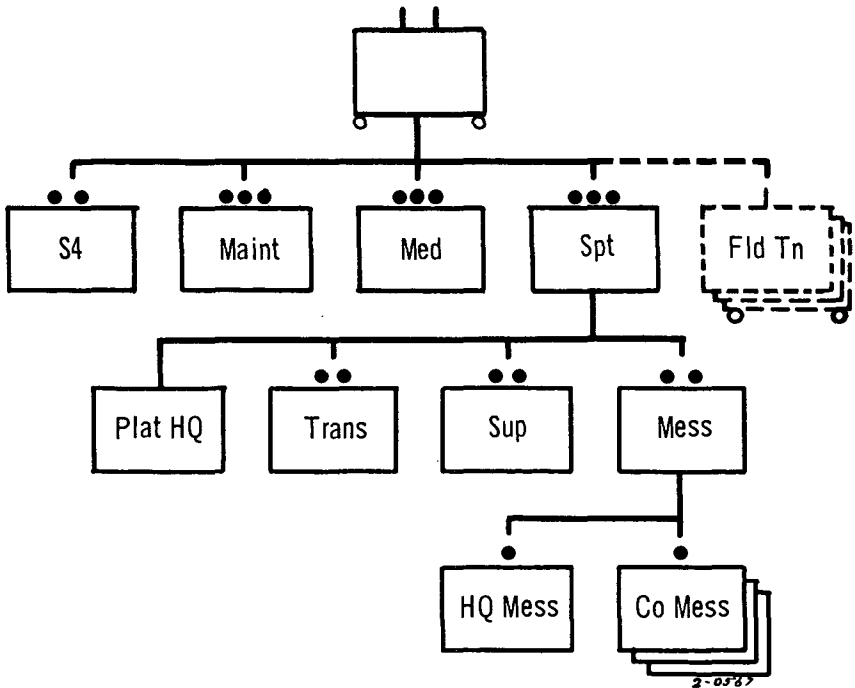
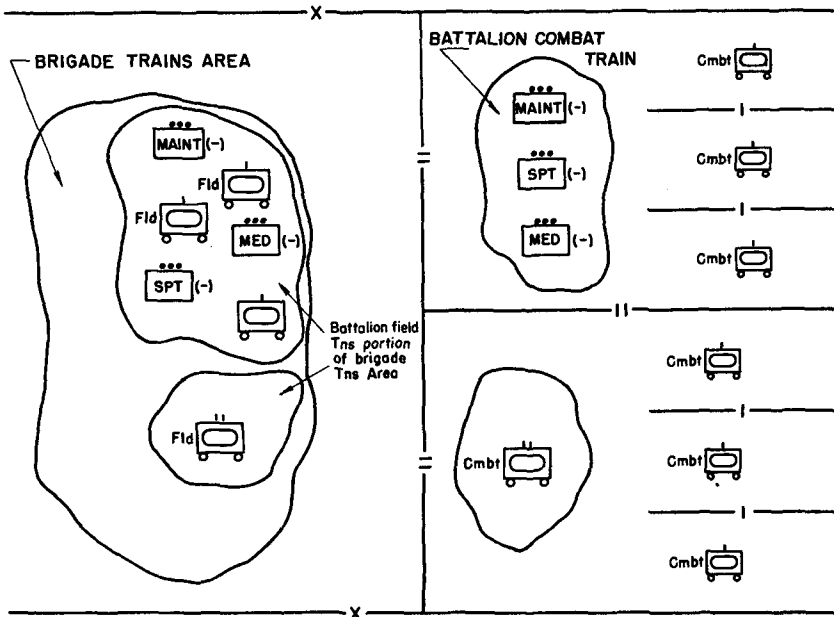


Figure 3. Battalion train units.



Typical deployment of tank battalion trains units

Figure 3—Continued.

(3) *Mess section.* The mess section is organized and equipped to receive class I supplies and to prepare and deliver meals to all units assigned or attached to the battalion.

c. Maintenance Platoon. The maintenance platoon is trained to perform organizational (second echelon) maintenance, to provide repair parts, and to accomplish battlefield recovery and evacuation of battalion equipment. The number and type of personnel and vehicles vary with the composition of the battalion as task organized for combat. The battalion maintenance (or motor) officer is located in the staff section of the battalion headquarters. The battalion maintenance officer plans and supervises the employment of the battalion maintenance elements and advises the commander on all maintenance matters with the exception of medical and signal items. For these items the responsibility rests with the battalion surgeon and battalion communications officer, respectively.

d. Medical Section. A medical section or platoon is an organic part of the headquarters of each battalion of the division, except the signal, maintenance, and supply and transport battalions. Medical sections or platoons are organized with the essential personnel, equipment, transportation, and communications to provide

medical aid personnel to the companies, emergency medical and surgical treatment, and evacuation of patients from the companies to the battalion aid station. The patients are treated at the battalion aid station and either returned to duty or further evacuated.

18. Capabilities

The battalion trains provide logistical support to the battalion to include the following:

- a. Second echelon maintenance.
- b. All classes of supply.
- c. Medical aid station including medical aid-evacuation team to each company. Company medical air-evacuation teams are not included in the aviation battalion.
- d. Transportation for administrative support.
- e. Evacuation for damaged and captured materiel and salvage.
- f. Battalion mess facilities.

19. Employment

a. The battalion (battalion task force) trains normally operate as combat trains and field trains. The composition of battalion (battalion task force) combat trains and field trains varies with the mission, tactical situation, and such other factors as terrain, weather, and time and space considerations. The battalion S4 is responsible to the battalion commander for planning, coordinating, and supervising the logistical activities in the battalion including the control of battalion trains. The battalion commander also has a surgeon, maintenance officer, and a communications officer to assist him in discharging his logistical responsibilities. Other elements of the headquarters and headquarters company may be used to assist the battalion S4 with the activities of the battalion trains.

b. The battalion combat trains are normally located near the battalion command post and are under the direct control of the battalion S4. Normally the battalion combat trains consist of major elements of the battalion maintenance platoon or section, medical platoon or section and the ammunition and fuel and lubricant vehicles of the battalion support platoon required for the immediate support of combat operations.

c. The battalion support platoon leader, as the assistant S4, controls the battalion field trains which are located in the brigade trains area. Battalion field trains consist of those vehicles, personnel, and equipment not required for the immediate support of combat operations, and generally include kitchen, ration, water,

equipment, administrative, fuel and lubricant, and ammunition vehicles not required in the combat trains. The majority of the support platoon elements normally operate from battalion field trains. A small part of the battalion maintenance platoon, such as a repair truck and a vehicle from the battalion medical section, may be left with the battalion field trains.

Section V. COMPANY TRAINS

20. Mission

The company trains provide continuous logistical support to the company.

21. Composition and Employment

a. Company trains consist of the company administrative and supply section, the company maintenance section, the attached medical aid-evacuation team, and supply vehicles. Company trains may be classified as company combat trains and company field trains.

(1) *Company combat trains.* The company combat trains consist of the company maintenance section and the attached medical aid-evacuation team, together with those supply vehicles that are attached to or placed in support of the company from the battalion support platoon. The company combat trains normally remain with the company.

(2) *Company field trains.* The company field trains consist of the administrative and supply section. The company field trains make up part of the battalion field trains and are thus located in the brigade trains area.

b. An important consideration in company, troop, and battery logistics is that each vehicle in the unit carries a prescribed load of rations, repair parts, water cans, fuel and lubricant containers, and part of the unit's basic load of ammunition, as appropriate.

c. A company detached from the parent battalion is accompanied by a company mess team and a proportionate share of the battalion's ammunition and fuel and lubricant supply vehicles in addition to its attached medical aid-evacuation team.

CHAPTER 3

ORGANIZATION OF DIVISION SUPPORT COMMAND

Section I. HEADQUARTERS COMPANY AND BAND, DIVISION SUPPORT COMMAND

22. General

The headquarters company of the division support command contains the command and staff facilities for the operation of the support command as well as the company headquarters and the band.

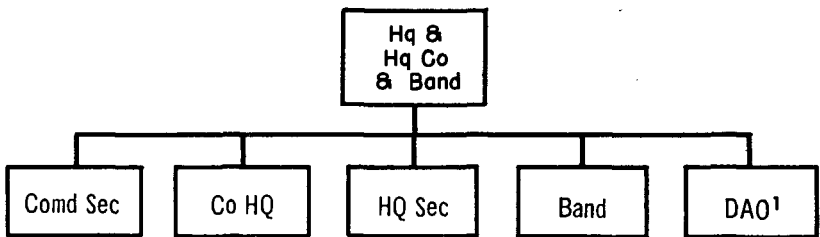
23. Organization

Organization of headquarters and headquarters company and band, division support command, is shown in figure 4.

24. Employment

a. The support command headquarters company operates two principal control elements—

- (1) The support command headquarters which provides the command supervision and staff planning of division logistical support operations. This headquarters may organize an ADSOC (pars. 45 and 46).
- (2) The company headquarters which provides the internal command and administrative support for the support command headquarters company and band.



¹DAO section in HQ & band companies only in infantry, mechanized, and armored divisions. The DAO is located in the supply and transportation battalion in airborne division.

Figure 4. Headquarters and headquarters company and band, division support command.

b. In the mechanized, infantry, and armored divisions the company has a division ammunition officer (DAO) to control the supply of class V within the division. The DAO is in the supply and transportation battalion in the airborne division.

c. Chaplains assigned to the support command headquarters normally are not assigned or attached to subordinate units, but provide religious coverage throughout the support command as required. The support command chaplain insures that adequate religious coverage is provided all division medical clearing stations.

d. The primary mission of the division band is to provide military and recreational music under operational control of the division adjutant general. It may also be employed in appropriate security and combat duties and to provide guards, supply handlers, litter bearers, guides, messengers, and labor details as directed by the support command commander.

Section II. ADMINISTRATION COMPANY

25. General

The division administration company is a carrier unit for certain special staff elements which provide personnel and administrative service support to the division and its attachments. It provides supply and third echelon maintenance for electrical accounting equipment.

26. Organization

Organization of the division administration company is shown in figure 5.

27. Employment

The administration company contains those division special staff sections which normally remain with the division rear echelon

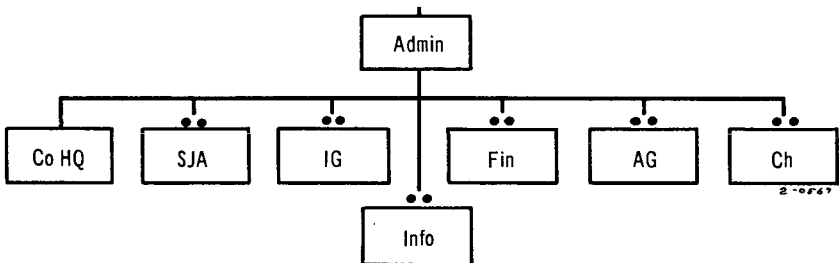


Figure 5. Division administration company.

(see par. 48). The administration company operates under the general staff supervision of the division G1 in providing division level personnel and administrative support to the division. The administration company operates under the support command commander for unit administration, tactical training, and tactical operations. The administration company headquarters section performs the normal functions of a company headquarters including mess and supply. The division special staff officers assigned to the company (adjutant general, finance officer, inspector general, staff judge advocate, chaplain, and information officer) operate in accordance with staff procedures and doctrine in FM 101-5. The adjutant general section also provides replacement postal service and special service support for the division. For details of the employment of the administration company see FM 12-11.

Section III. MEDICAL BATTALION

28. General

The division medical battalion provides division level medical service to the division to include—

- a. Operation of division clearing stations with a limited short-term holding capacity.
- b. Evacuation of patients from unit medical treatment facilities.
- c. Medical supply and organizational maintenance of medical equipment.
- d. Emergency dental treatment.
- e. Limited psychiatric service.

29. Organization

Organization of the division medical battalion is shown in figure 6.

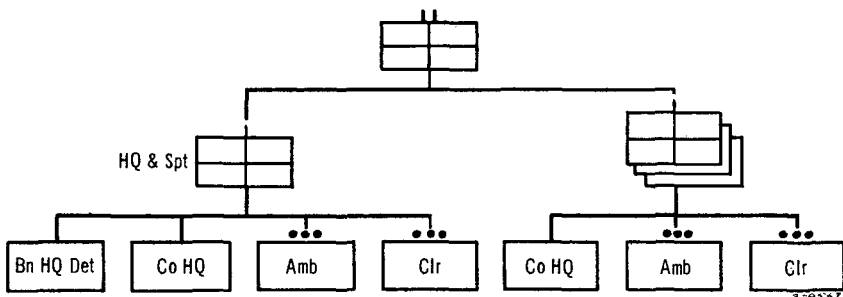


Figure 6. Division medical battalion.

30. Employment

The medical battalion is assigned to the support command. The three medical companies are capable of operating ambulances and clearing stations in support of the brigades. However, it is usually not necessary to operate more than two division clearing stations at any one time in support of the committed brigades. Each medical company can operate two clearing stations for displacement and short duration operations. The headquarters and support company ambulances and clearing station normally operate in the division support area to support division troops and the support command. Medical units normally furnish support on an area basis. For details of the operation of the medical battalion see FM 8-15.

Section IV. SUPPLY AND TRANSPORT BATTALION

31. General

The supply and transport battalion is responsible for supplying the division and its attachments with all items of supply except class V, medical, aircraft parts and supplies cryptographic, and repair parts. The airborne division supply and transport battalion's responsibility also includes the supply and control of class V supplies. In addition to the above the battalion provides—

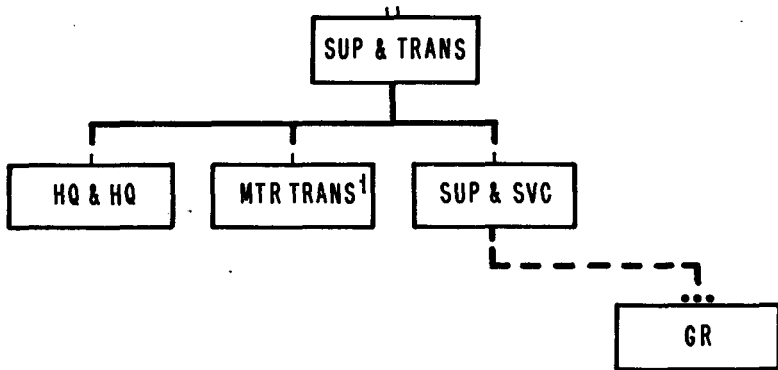
- a.* Reserve stocks of classes I and III, and selected fast moving classes II and IV in all divisions, and also reserves of class V in the airborne division.
- b.* Transportation for administrative support operations.
- c.* Transportation for tactical movement in the infantry and airborne divisions when required.
- d.* Bath facilities and when practicable, clothing exchange service.
- e.* Map supply.
- f.* Graves registration service, when properly augmented.
- g.* Operate a division salvage collection point.

32. Organization

Organization of the division supply and transport battalion is shown in figure 7.

33. Employment

The supply and transport battalion provides and operates distributing points for classes I, II, III, and IV supplies (less repair parts) in the brigade trains areas and in the division support area.



¹ Because the supplies required by the armored, mechanized, infantry, and airborne divisions generally decrease in that order, the personnel strength and trucks of the transportation company decrease slightly in the same order.

LEGEND

----- Augmentation.

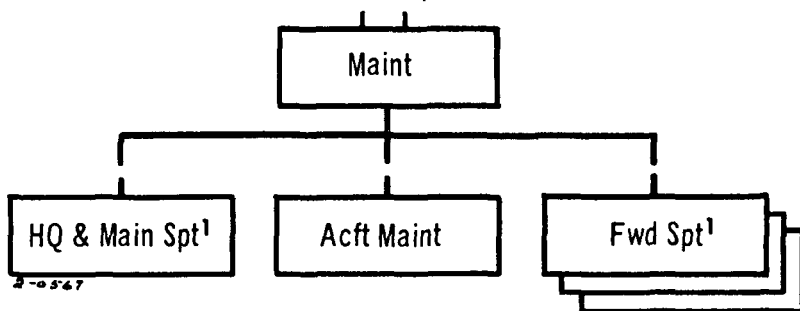
Figure 7. Division supply and transport battalion.

Selected fast moving classes II and IV supplies are stocked in the division support area by the battalion. These supplies are delivered by the support command to the forward class I distributing points on request. In the airborne division the DAO is in the battalion and when necessary provides and operates class V distributing points in an airborne operation. Supply and transportation elements from the battalion may be attached or placed in support of divisional units operating in independent or semi-independent missions. The battalion provides bath unit support on an area basis. The battalion, when so augmented, provides graves registration support in each brigade area to receive, identify, and arrange for evacuation of dead to the division collecting point. It provides a graves registration collecting point in the division support area. Division reserve stocks of classes I, II, III, and IV supplies are maintained in the division support area. In the infantry and airborne divisions, corps or army transportation units normally provide transportation for movement of combat units. For details of the operation of the supply and transport battalion see FM 10-50.

Section V. MAINTENANCE BATTALION

34. General

The maintenance battalion provides division level maintenance support to the division and its attachments to include—



¹ Because the maintenance required by the armored, mechanized, infantry, and airborne divisions generally decreases in that order, the personnel strength of these units decreases in the same order.

Figure 8. Division maintenance battalion.

a. Third echelon maintenance for all materiel except medical, electrical accounting, quartermaster air, and cryptographic equipment.

b. A maintenance float of selected items for direct exchange.

c. Supply of repair parts.

d. Operation of maintenance collecting points and provision of evacuation service.

35. Organization

Organization of the division maintenance battalion is shown in figure 8.

36. Employment

Direct maintenance support, to include a limited materiel recovery and evacuation capability, is provided the brigades by the forward support company in the brigade trains area. The forward support company is reinforced as required by elements of the headquarters and main support company of the maintenance battalion. The headquarters and main support company operates in the division support area, providing direct maintenance support to the division elements not supported by the forward support companies and backup maintenance support to the forward support companies. The main support company operates the main division maintenance collection point and provides evacuation service for the materiel it supports. The aircraft maintenance company provides third echelon maintenance for organic and attached division aircraft at airstrips and helicopter operating sites. For details of the operation of the maintenance battalion see FM 9-30.

Section VI. AIR EQUIPMENT SUPPORT COMPANY (AIRBORNE DIVISION ONLY)

37. General

The airborne division air equipment support company is organic to the support command of the airborne division. This company requisitions, receives, stores, and issues air-delivery equipment. It is capable of receiving and stockpiling sufficient air-delivery equipment for packing, rigging, and loading supplies and equipment prior to an airborne operation, to include the accompanying supplies that are delivered by parachute. In addition to the above, the company—

- a. Inspects and packs parachutes.
- b. Provides organizational maintenance for quartermaster air-delivery equipment.
- c. Supervises and assists in the evacuation of quartermaster air-delivery equipment after a drop.
- d. Fragments to support the division when elements are dispersed.
- e. Provides technical assistance in the packing, rigging, and loading of supplies and equipment for air delivery.

38. Organization

Organization of the airborne division air equipment support company is shown in figure 9.

39. Employment

a. The company operates in support of the division in garrison or in the departure area and accompanies the division on administrative moves. Once the division is committed, the continuing daily air-delivery requirement is provided by an army quartermaster aerial supply company.

b. The air equipment support company provides technical assistance to units of the airborne division preparing for an airborne

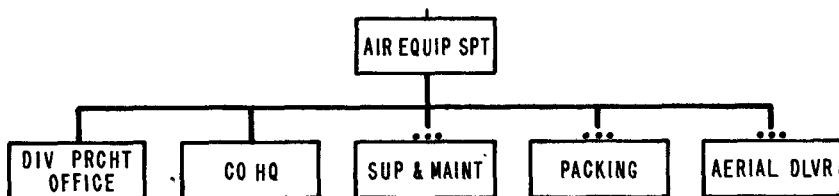


Figure 9. Airborne division air equipment support company.

operation. The supply and maintenance platoon requisitions, stores, and issues quartermaster air delivery equipment, maintains supply records, and inspects and assembles rigging components and related equipment. The platoon also performs organizational maintenance on the air-delivery equipment and, when required, attaches parachute assemblies to cargo and assists in packing of personnel and cargo parachutes. The packing platoon inspects and packs cargo and personnel parachutes. It inspects cargo parachute assemblies and may assist jumpmasters in inspecting the fit of personnel parachutes. Personnel of the packing platoon may accompany the assault echelon to provide technical assistance in the recovery and evacuation of air-delivery equipment. The air delivery platoon performs heavy cargo parachute packing and supervises the platform load rigging and preparation of aerial delivery containers. For details of the operation of the airborne division air equipment support company see FM 10-33.

CHAPTER 4

EMPLOYMENT OF DIVISION SUPPORT COMMAND

Section I. GENERAL

40. Command and Control

Logistical support operations are planned and controlled to insure that essential tasks are performed, that the priorities in which they are performed correspond to the tactical situation, that the logistical support system is immediately responsive to changes in the situations of supported units, and that resources are efficiently used. To facilitate control, an ADSOC may be established through which the support command commander coordinates other than routine logistical support.

41. Support Command Commander

a. General. The division support command commander is a tactical commander and the logistical operator of the division.

b. Duties. The support command commander is responsible for—

- (1) Execution of the logistical support of the division.
- (2) Tactical command of all administrative support units physically located in the division rear area.
- (3) Organization of the movement and disposition of the division support command within the division area in accordance with the tactical plans. This duty requires coordination with G3 and G4 on location of all administrative support units.
- (4) Training of personnel of the division support command with the exception of the administration company and medical battalion. The division support command commander is responsible for the tactical training of the administration company and medical battalion.
- (5) Supervision of the internal administrative support of the division support command.
- (6) Coordination and implementation of assigned rear area security responsibility.
- (7) Coordination and implementation of area damage control for the division rear area.

- (8) Advice to division commander on supply and maintenance matters and quartermaster, ordnance, and transportation operations.

Section II. STAFF

42. Composition

The staff of the division support command consists of an executive officer and S1, S2, S3 and S4 sections. The staff sections perform normal staff functions as described in FM 101-5. The division support command commander may designate commanders of subordinate units to represent him in advising the division commander in technical areas. The following assignments are considered appropriate:

<i>Assignment</i>	<i>Special staff responsibility</i>
Commanding officer supply and transport battalion.	Transportation Supply of chemical, engineer, ordnance, quartermaster, signal and transportation materiel
Commanding officer maintenance battalion.	Maintenance and repair parts supply for chemical, engineer, ordnance, quartermaster, signal and transportation materiel

43. Relationships and Responsibilities

a. The relationship between the division general staff and the support command commander and his staff is the same as that between the division general staff and any other major subordinate commander and staff. Although the mission of the support command is primarily logistical, the support command commander and his staff are subject to general staff supervision by all members of the general staff within their respective fields.

b. With specific reference to logistical support, area damage control, and rear area security, the division general staff is responsible for—

- (1) Policy and plans as a general staff function, excluding operating responsibilities.
- (2) Determination of priorities.
- (3) Preparation of division administrative plans.

c. The support command staff assists the support command commander in the execution of all of his responsibilities to include—

- (1) Exercise of command over support command units.
- (2) Coordination with and assistance to the general staff in preparing the division administrative, area damage control, and rear area security plans.
- (3) Supervision of support command responsibilities in-

cluded in the administrative, area damage control, and rear area security plans and orders.

(4) Organization and operation of the ADSOC as required.

d. To accomplish the functions in c above the division support command staffs and operates the support command Command Post to include an ADSOC if desired. The details of operation of this installation are covered in paragraphs 45 and 46.

Section III. FIELD INSTALLATIONS

44. Division Support Area

a. *Composition.* The division support area is that portion of the division rear area in which the majority of the assigned or attached units of the support command are located. It also may contain army and/or independent corps administrative support units operating in support of the division. The support command command post is located in the division support area.

b. *Functions and General Operating Procedures.* The support units in the division support area provide backup logistical support to the support command units supporting the brigades and provide direct logistical support to units operating in the division rear area (pars. 45 and 46.)

c. *Location and Displacement.* The division support area is normally located in the division rear area adjacent to the main supply route. The precise location is contingent on tactical plans, location of the army logistical installations, terrain in the area of operation, and security considerations. The division support area is moved as frequently as possible consistent with maintaining continuous logistical support to all division units and considering the necessity for movement as a passive defensive measure. The new location and order for movement of the division support area are determined by the support command commander after coordination with the division G3 and G4.

d. *Security.* Local security is provided by the individual units located in the division support area. Coordination of local security is accomplished by the support command commander, normally through the ADSOC when established.

45. Support Command Command Post

a. *Composition.* The support command command post contains the commander, the executive officer, and the S1, S2, S3 and S4 staff sections of the support command headquarters. The command post has advice available from the specialists in units sub-

ordinate to the support command to assist in the technical planning and operations.

b. Functions and General Operating Method. The support command command post is the control center for command and administration of the command and all of its attachments. It coordinates all logistical operations within the division. See paragraph 43c for the functions of the support command staff.

c. Location and Displacement.

- (1) The support command command post is located within the division support area to—
 - (a) Facilitate the command of subordinate units of the support command.
 - (b) Provide sufficient area to accommodate all elements of the command post.
 - (c) Provide adequate signal communications.
 - (d) Provide adequate cover, concealment, and dispersion.
 - (e) Reduce probability of damage and facilitate defense by locating away from probable enemy targets and likely areas of enemy attack.
 - (f) Provide sufficient drainage and hardstand.
 - (g) Require a minimum of road and other construction and maintenance.
- (2) A standard interior arrangement of the command post is desirable. This facilitates the location of staff sections by visitors, the movement of command post vehicles, and the establishment and displacement of the command post. An orderly arrangement requires consideration of the following:
 - (a) Grouping those agencies which frequently work together such as S2 and S3.
 - (b) Locating near entrances those agencies which have considerable traffic, such as the S4.
 - (c) Locating away from entrances those agencies requiring additional security.
 - (d) Locating centrally, common user agencies such as the signal center and motor pool.
 - (e) Locating a directory service at the command post main entrance to direct personnel to the proper agency within the command post or to the location of the desired subordinate logistical support unit. This promotes efficiency of operations and reduces congestion within the command post.
- (3) The arrangement provides for the prompt displacement of the command post on short notice. Displacement is

accomplished by using the off-duty shift at the new location or by moving in increments. Displacement of the support command command post is usually accomplished concurrently with the displacement of division support area.

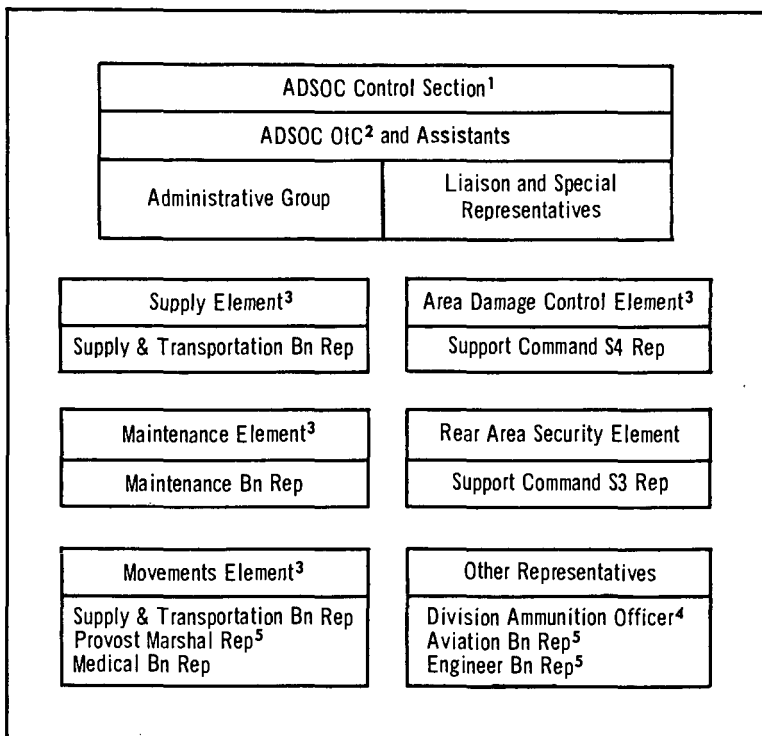
d. *Security.* Local security of the support command command post is provided by the headquarters company and band of the support command.

46. Administrative Support Operations Center

a. *Composition.* The ADSOC is a groupment of elements of those staff sections and operational units concerned with current logistical support operations, area damage control, and the rear area security missions of the support command. The ADSOC is a staff facility of the support command command post designed to rapidly coordinate and act upon other than routine requirements. Its precise composition and organization is determined by the support command commander. The officer in charge of the ADSOC is designated by the support command commander. A type division ADSOC is shown in figure 10. It may consist of—

- (1) ADSOC control section provided by the command section, support command headquarters.
- (2) Area damage control element provided by the support command S4 section.
- (3) Rear area security element provided by the support command S3 section.
- (4) Movements elements provided by the supply and transportation battalion.
- (5) Supply element provided by the supply and transportation battalion.
- (6) Maintenance element provided by the maintenance battalion.
- (7) Liaison officers from division and corps/army units. This normally includes representation from the division tactical operations center (TOC), and, where appropriate, the division tactical support units and civil affairs section. A liaison officer from the administration company may be provided to coordinate requirements and information pertaining to the division rear echelon.

ADSOC representation in the TOC is provided on a minimum essential basis to provide advice and information to the TOC elements concerning the logistical support status and capability for support of current tactical operations. The information available



2-0567

- ¹The nucleus of the ADSOC. Coordinates and supervises ADSOC elements.
- ²Directs operations of ADSOC.
- ³Operating element of the ADSOC; representatives are cognizant of the policies and views of their staff section chief and represent him in taking or recommending action. These elements may be combined by SOP as the situation dictates. For example, the area damage control element and the rear area security element may be combined into an area damage control-security element.
- ⁴Operates in the ADSOC when the location of the ADSOC is on a direct route between the tactical units and the supporting army ammunition supply point.
- ⁵Representatives provided when military police, aviation, or engineer units are in support of or attached to the support command.

Figure 10. Type support command ADSOC.

to the ADSOC liaison officer to the TOC is kept current by an exchange of information with the ADSOC.

b. Function and General Operating Method.

- (1) The ADSOC continually assesses the current logistical support situation, capability, and limitations. Requirements and information emanate from division combat, combat support, logistical, personnel, and civil affairs units as well as staff sections. The requirements may be for logistical support, area damage control, or for rear area security. G1, civil affairs personnel, the adjutant

general and the provost marshal retain direct responsibility for the implementation and operation of personnel and civil affairs portions of the administrative order. The ADSOC receives requirements, and the appropriate ADSOC elements concurrently analyze and coordinate their actions directly. ADSOC elements coordinate their activities, where appropriate, with higher, lower, adjacent, and supporting commands and simultaneously issue instructions to operating units for execution.

- (2) The division commander and the division general staff provide policy guidance on logistical support matters to the support command commander. Based on this guidance, the support command commander provides policy guidance to the officer in charge of the ADSOC and delegates to him to the maximum extent the functions of direction and coordination of other than routine logistical support. Problems which cannot be resolved by coordination between ADSOC elements are referred to the ADSOC control section for resolution. The officer in charge of the ADSOC, dependent upon the specific requirement and the time available, may act for the support command commander even in the absence of specific guidance. When time permits or the magnitude of the problem dictates, unresolved matters are referred to the support command commander for resolution. As necessary or appropriate, critical matters not covered by policy guidance are referred to the general staff or the division commander for resolution.
- (3) Support command staff and unit representatives assigned to the ADSOC are responsible to the officer in charge of the ADSOC for the implementation of ADSOC functions. Their specific responsibilities pertain to ADSOC activities which are the normal responsibility of the support command staff section or unit which they represent.
- (4) The TOC liaison officer to the ADSOC provides information on current tactical operations and their logistical support requirements. The liaison officers of subordinate and supporting elements provide the ADSOC with the current capabilities of their unit.
- (5) Liaison officers in the ADSOC representing other than assigned or attached units of the support command report directly to the units they represent and have no responsibility for or authority over ADSOC operations.

- (6) In fast moving tactical operations, elements of the support command headquarters, normally from the ADSOC, may operate forward of the division support area to insure continuous and rapid logistical support of combat elements. This forward logistical element of the support command could consist of the DAO, a class III distributing point, an army class V supply point or a division class V distributing point, when required, and the necessary communications personnel and equipment.

c. Location and Displacement. The ADSOC, as a staff facility of the support command command post, is dependent on the support command headquarters for administrative and communications support. Therefore, the ADSOC normally locates and moves with the support command command post (par. 45c and b(6) above). The ADSOC also is located to facilitate the tactical control of the administrative units operating in the division rear area.

d. Security. Normally the local security of the ADSOC is integrated with that of the support command command post. Personnel of the ADSOC provide the local security of the ADSOC.

47. Division Support Command Units in Brigade Areas

a. Composition. Typically the following support command elements are found in the brigade trains.

- (1) A forward support company of the maintenance battalion.
- (2) Division forward distributing points for classes I, III, and fast moving II and IV supplies. The airborne division may establish a class V forward distributing point.
- (3) A medical company.
- (4) A graves registration collecting point.
- (5) Bath facilities.
- (6) Forward maintenance and salvage collecting point.

The strength and composition of the support command units operating forward of the brigade rear boundary are changed to meet varying needs of the brigades or the area they support.

b. Function and General Operating Method.

- (1) Units or elements of the division support command are normally employed in support of the committed brigades. A reserve brigade continues to receive its support from its supporting forward support maintenance company. Other division level logistical support is normally furnished from the division support area. The forward divi-

sion support command units can provide logistical support on an area basis, a task basis, or a unit support basis. Normally, a support command unit operating with a committed brigade provides unit support to brigade and its attached units. In addition, a division support command unit supporting a brigade normally provides logistical support on an area basis to units operating in the vicinity of the brigade.

- (2) A forward support company of the maintenance battalion provides to its supported units one stop field maintenance, repair parts, and mobile maintenance teams for the maintenance of equipment of all technical services except for medical and cryptographic. The forward distributing points from the supply and transport battalion in the brigade trains area provide supply point distribution for classes I and III and previously requested II and IV supplies. Each medical company can provide a clearing station (two for a short duration) to provide medical services and limited medical classes II and IV supply to brigades and other units normally on an area basis.
- (3) Support command units in the brigade areas operate under the control of their parent unit but may be attached to the brigades or battalions for independent or semi-independent operations.

c. Security. Each support command unit operating within the brigade area of responsibility provides its own local security. The overall security of the brigade trains area is controlled by the brigade.

48. Division Rear Echelon

The division rear echelon consists of the administration company including those division staff agencies whose function is to provide personnel and administrative services and whose continuous presence is not required in a forward portion of the division area. The officer in charge of division rear echelon, is the division adjutant general. The officer in charge of the division rear echelon is responsible to the support command commander for the tactical control, security, and movement of the division rear echelon. The support command commander integrates the division rear echelon into the area damage control plan and the rear area security plan when the division rear echelon is located in the division support area. The support command commander is responsible for the tactical training and the logistical support

of the division rear echelon including the provision of transportation when necessary to displace the division rear echelon. See FM 12-11. For additional information on composition, location and displacement of the division rear echelon see paragraph 28, FM 61-100.

SECTION IV. ORGANIZATION OF THE DIVISION SUPPORT COMMAND FOR COMBAT

49. Offense

a. The movement and deployment of the support command are based on the tactical plan and groupment of the combat units of the division. If the attack originates from an assembly area, the support command is located centrally within the division with all its elements under unit control. In this location, supply operations and maintenance in preparation for the attack are performed. In the assembly areas the units which will provide support for the brigades are designated by the support command commander and are provided the necessary means to support the tactical operation. Provisions are made to refuel the vehicles of division units.

b. Support command units which will support a deployed brigade in an attack should be organized and provided the necessary means prior to the attack.

c. Prior to and during the attack, the forward support command units perform supply, maintenance, and vehicle as well as medical evacuation tasks. When displaced during an attack, division logistical support units are normally located to favor the division main effort.

d. In the exploitation, frequent displacement of the support command units in support of brigades is usually required. The distance the division support area remains behind division tactical elements depends on such considerations as the requirements of the combat units, the planned establishment of army supply points and facilities, and the availability of suitable locations for forward displacement.

e. The plan of attack must be capable of being logistically supported. If a projected operation cannot be supported logistically with resources available to the division, the support command commander advises the division commander or his staff of this fact and assistance is requested from higher headquarters or a plan which can be supported logistically is adopted.

50. Defense

a. In defensive operations the location of the division support area of the support command is influenced by requirements for security. The division support area is normally located well to the rear to minimize concentration of forces in the defensive area. Support command elements operate in the brigade areas to support the brigades. In an all-round defensive perimeter, as in an airborne operation, adequate space is provided for the division support area within the defensive area.

b. Defensive operations normally require large tonnages of class IV barrier materials and class V supplies including mines and demolitions. This requires that traffic control procedures and the location of forward support elements of the support command be carefully coordinated. The support command elements are located to support counterattack plans. Provisions are made to provide air supply and aeromedical evacuation in the event enemy action interferes with established procedures.

51. Retrograde

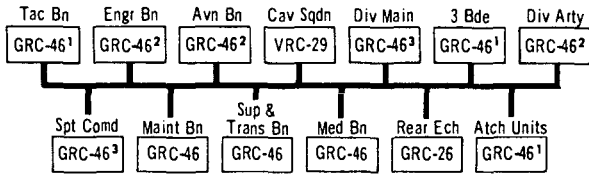
The rearward movement of the support command is coordinated with the tactical plan. The division support area is positioned well to the rear so as not to interfere with the withdrawal of combat elements. Skeletonized support command elements provide essential supply, maintenance and medical support to the brigades in contact. The support command and army supply points may leave small stockpiles of critical supplies such as classes III, IV, and V supplies, along the axis of withdrawal for use by the support command units in support of the brigades in contact. The division ammunition officer retains responsibility for control of the class V supplies until they are issued to tactical units.

Section V. COMMUNICATIONS

52. Support Command Communications

a. General. The support command platoon, command operations company, division signal battalion, provides communications support to the support command. This platoon provides communications from the support command command post, including the ADSOC, to the subordinate units of the support command operating in the division support area. Type communications diagrams for the support command are shown on figure 11. Subordinate units of the support command operating outside the division support area obtain signal support from the nearest area communications center.

DIVISION ADMIN/LOG RATT

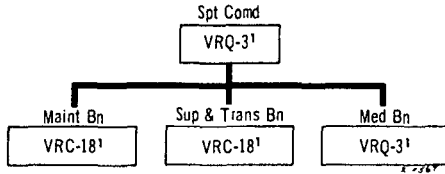


¹Substitute AN/VRC-29 in mechanized and armored divisions.

²Personnel and equipment furnished by div sig bn.

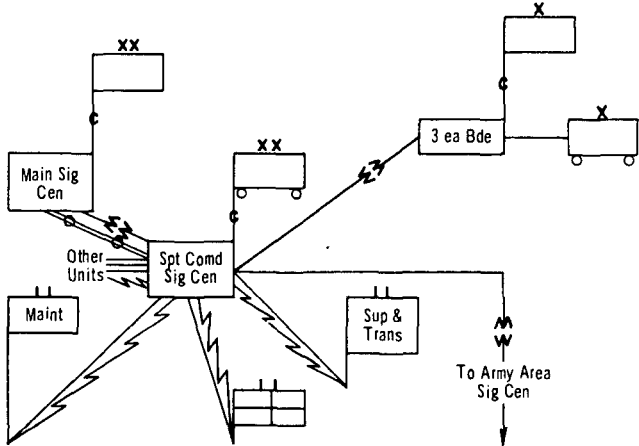
³Enters net as required by switching from another net.

SUPPORT COMMAND COMD NET FM



¹Substitute the following radio sets in armored division for those shown:
AN/VRC-18-VRC-16, AN/VRQ-3-AN/VRQ-1.

SUPPORT COMMAND IN DIVISION AREA COMMUNICATIONS SYSTEM



LEGEND

W 12-channel radio relay.

⊕⊕⊕⊕ Spiral four-cable carrier system.

— Field wire circuits.

⚡ Wire-FM radio integration.

NOTE: Elements of subordinate units of the support command operating in other parts of the division area will tie into the nearest division signal center.

Figure 11. Type support command communications.

b. Support Command Platoon, Command Operations Company, Division Signal Battalion. The platoon leader of the support command platoon of the command operations company, division signal battalion, acts as communications officer for the support command commander. His platoon provides the support command headquarters the following support:

- (1) Installs and operates message center, messenger, cryptographic, teletypewriter, and radio (except staff vehicle radios) communications for the support command headquarters and its ADSOC.
- (2) Installs and operates a signal center in the division area communications system providing trunkline service for the support command headquarters subordinate units of the support command located in the division support area and other attached and supporting units operating in the immediate area.
- (3) Installs and operates local telephone communications for the support command headquarters.
- (4) Provides and operates a radio to function in division administrative net (AM-RATT) for the support command.

Section VI. REAR AREA SECURITY

53. General

The division support command commander is responsible for the security of that portion of the division rear area essential to the efficient functioning of the administrative support units. This includes the security of higher echelon administrative support units operating in the division rear area. The division G3 has primary general staff responsibility for rear area security and, in conjunction with division G2 and G4, plans and assigns the responsibilities for rear area security. The division support command security plans are based on the division operation plan.

54. Forces

Each administrative support unit located in the division rear area provides its own local security and assists in rear area security. When required, the support command commander may be provided a combat force to secure critical areas or counter hostile threats which threaten the accomplishment of the administrative support mission.

55. Scope

Operations against small-scale enemy attacks threatening the security of administrative support activities and the defense of administrative support activities against guerrilla and infiltration action are included in the rear area security responsibility of the division support command commander. Surveillance and security of portions of the division rear area not essential to the accomplishment of the mission of the support command and other administrative support activities are division responsibility. Enemy action in the division rear area of a magnitude beyond control of the local security elements is considered part of the main battle. Necessary combat forces under the supervision and control of division are applied to reduce such threats.

56. Measures

a. Measures employed by the support command to accomplish its rear area security mission include—

- (1) Deploying administrative support units and facilities with due regard to their defensibility and mutual support.
- (2) Coordinating local security plans of adjacent units.
- (3) Coordination with reserve elements located in rear areas.
- (4) Employing an alert system for rapid communication concerning hostile threats.
- (5) Using armed convoys.
- (6) Posting security detachments at critical locations in the road nets.
- (7) Employing route reconnaissance and patrols.
- (8) Enforcing camouflage and light discipline.
- (9) Employing obstacles.
- (10) Executing radiological monitoring and survey when required.

b. The division administrative support units train their own personnel for local security under the supervision of the support command commander. Communications and warning systems are established and standing operating procedures are developed and practiced. Protection is provided personnel, key activities, and lines of communications essential to the division. Operations are dispersed and defensive positions prepared consistent with the effective execution of the administrative support mission. If security requirements are beyond the capability of the administrative support units in the division rear area, minimum essential combat

or combat support units are provided the support commander to conduct reconnaissance over critical areas, patrol routes, and escort convoys.

c. The ADSOC when established is normally used by the division support command commander to facilitate the direction of rear area security operations.

Section VII. AREA DAMAGE CONTROL

57. General

The division G4 has primary general staff responsibility for area damage control. The division support command commander is responsible for the plans and activities necessary to minimize the effects of enemy use of nuclear, chemical, or biological weapons or natural disasters on administrative support within the division rear area. While restoration of administrative support is not included in the scope of area damage control, the support command commander, in planning and supervising area damage control, places priority on actions which preclude or reduce the interruption of division operations. The effect of diverting administrative support elements to area damage control tasks is carefully weighed.

58. Means

The principal means available to the division support command commander for area damage control are the personnel and equipment of administrative support units operating in the division rear area. Locally procured resources and assistance from non-divisional units may be available in some situations. The ADSOC may be used to facilitate the direction of area damage control operations.

59. Measures

Area damage control measures include:

a. Standing operating procedures and implementing instructions for self help within each administrative support unit.

b. Designating, training, and employing of required firefighting, damage clearance, decontamination, rescue, food service, medical, and repair teams in the various administrative support units. Each unit is directed to prepare teams appropriate to its skills and equipment.

c. Assessing the extent and significance of damage and instituting area damage control measures to minimize losses in personnel,

materiel and facilities. Control and assessment teams (CAT) are formed in the division support command headquarters and in other designated support command units for use in the division rear area.

d. Rerouting of traffic, as required, to provide continuous support to tactical elements and to facilitate the reduction of damage and contamination.

e. Dispersion of facilities to avoid or minimize damage and contamination.

CHAPTER 5

DIVISION LOGISTICAL SUPPORT PROCEDURES

Section I. SUPPLY

60. General

a. The preferred method of distribution of supplies from the source to user is unit distribution. This method is beyond the capability of the support command so the division normally employs a combination of supply point and unit distribution. Supplies delivered to the division by direct support units are delivered direct to the using units without transloading whenever possible. In airborne operations the same principal is applied to air delivered supply, where possible, delivery is to the using unit.

b. In moving situations, the division carries with it only the supplies needed for immediate consumption, i.e., a sufficient quantity to sustain operations until additional supplies can be delivered. This may include small reserves as insurance against interruptions in supply delivery. In static situations, sufficient supplies for several days' consumption may be stocked in the division area in order to free transportation for other purposes.

c. The levels of supply carried by the division are prescribed by the field army commander.

61. Class I

(fig. 12)

a. *Requisitioning.* The division adjutant general provides the division supply and transport battalion with the estimated strength figures for the division. Using these figures as a basis, the supply and transport battalion prepares the division daily ration request and dispatches it to the army class I supply facility supporting the division 72 hours prior to the time rations are to be delivered. Units of the division submit daily ration requests to the supply and transport battalion. When a unit desires a specific type ration, it notifies the supply and transport battalion in advance. Distribution of rations is based on the unit request.

b. *Distribution.* The army supply installation supporting the division delivers class I supplies to the division distributing point located in the division support area or to the division forward

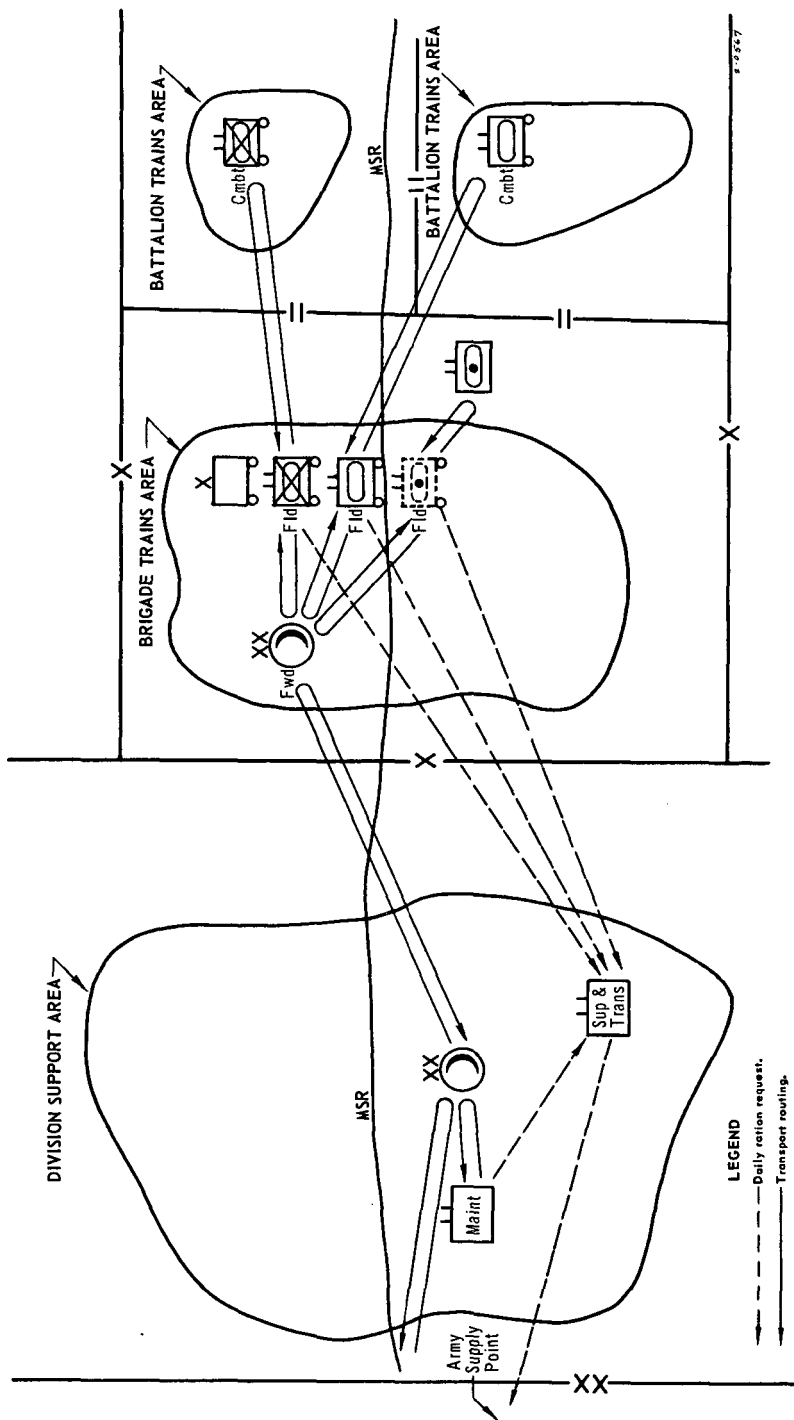


Figure 12. Flow diagram class I supplies.

distributing points located in the brigade trains area. Rations are broken down into unit (battalion) lots and picked up by the requesting units with organic transportation at their prescribed class I distributing point. When the location of units and the tactical situation permit, rations may be delivered direct to the using units in division or corps/army transportation.

c. Reserves. Units of the division normally carry two rations: one is for reserve and the other is for daily use. The division supply and transport battalion can carry one additional reserve ration on organic transportation.

d. Facilities. The division supply and transport battalion is capable of fragmenting to operate class I distributing points in the division support area and in each brigade area on an area basis or brigade support basis. Distributing points are located on well defined routes and near the center of mass of the supported units.

62. Class II

(figs. 13, 14 and 15)

a. General. Class II supplies of the various technical services, with the exception of repair parts, medical, cryptographic and electrical accounting supplies, are provided by the supply and transport battalion. Medical supplies are provided by the medical battalion, cryptographic supplies by the signal battalion, and repair parts are provided by the maintenance battalion. Electric accounting supplies and repair parts are provided by the administration company.

b. Requisitioning.

- (1) Units of the division forward requirements to the supply and transport battalion which in turn forwards the division requirement to the appropriate field army supply unit or facility supporting the division.
- (2) Units requisition medical supplies from their battalion aid stations. The battalion aid stations replenish their supplies by informal requests sent to the clearing station by ambulances evacuating patients. The clearing station in turn forwards unfilled requests and any requests for replenishment of its own supplies to the division medical supply point by field army ambulances evacuating patients. The clearing station does not consolidate supply requests.

c. Distribution.

- (1) Fast moving class II supplies are forwarded directly by the supporting army supply unit or facility to the division

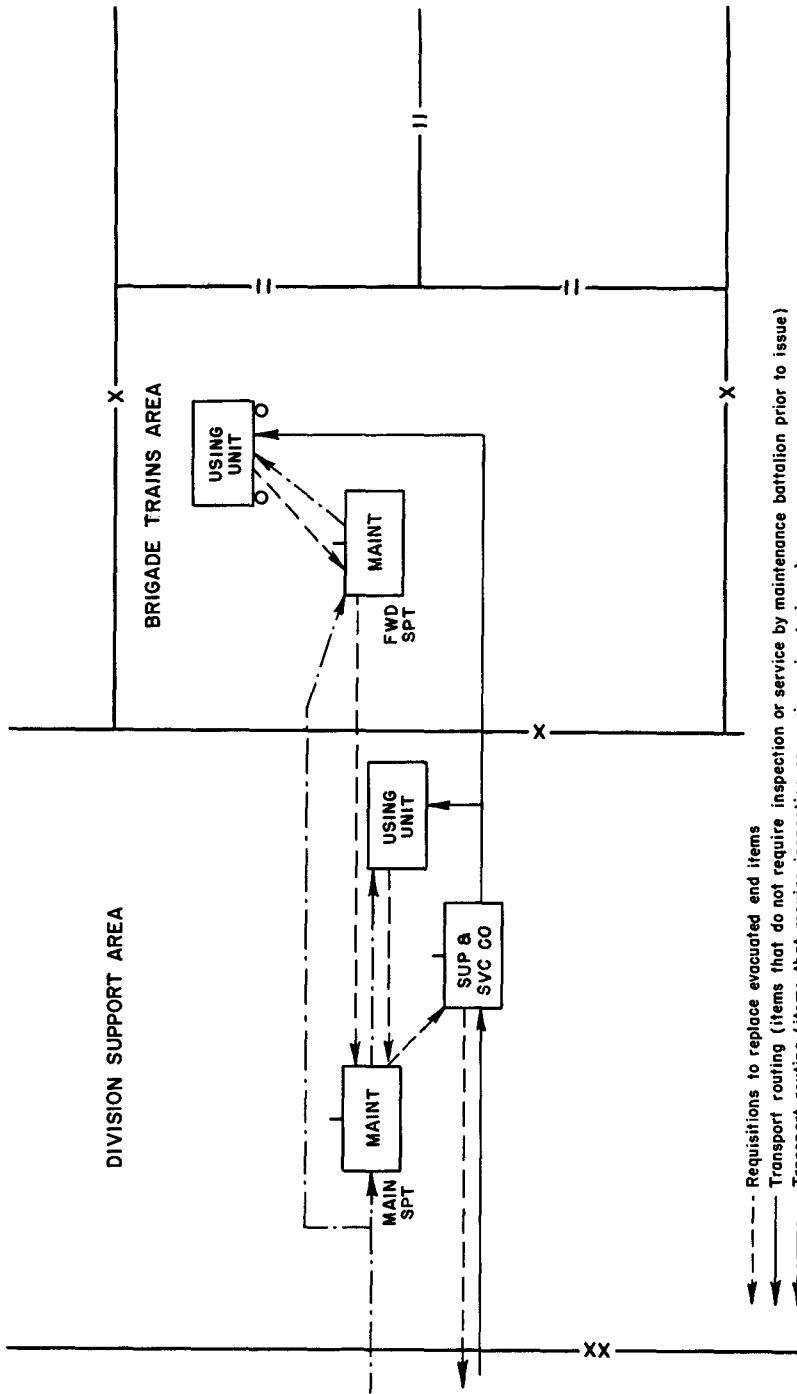


Figure 13. Replacement of evacuated end items.

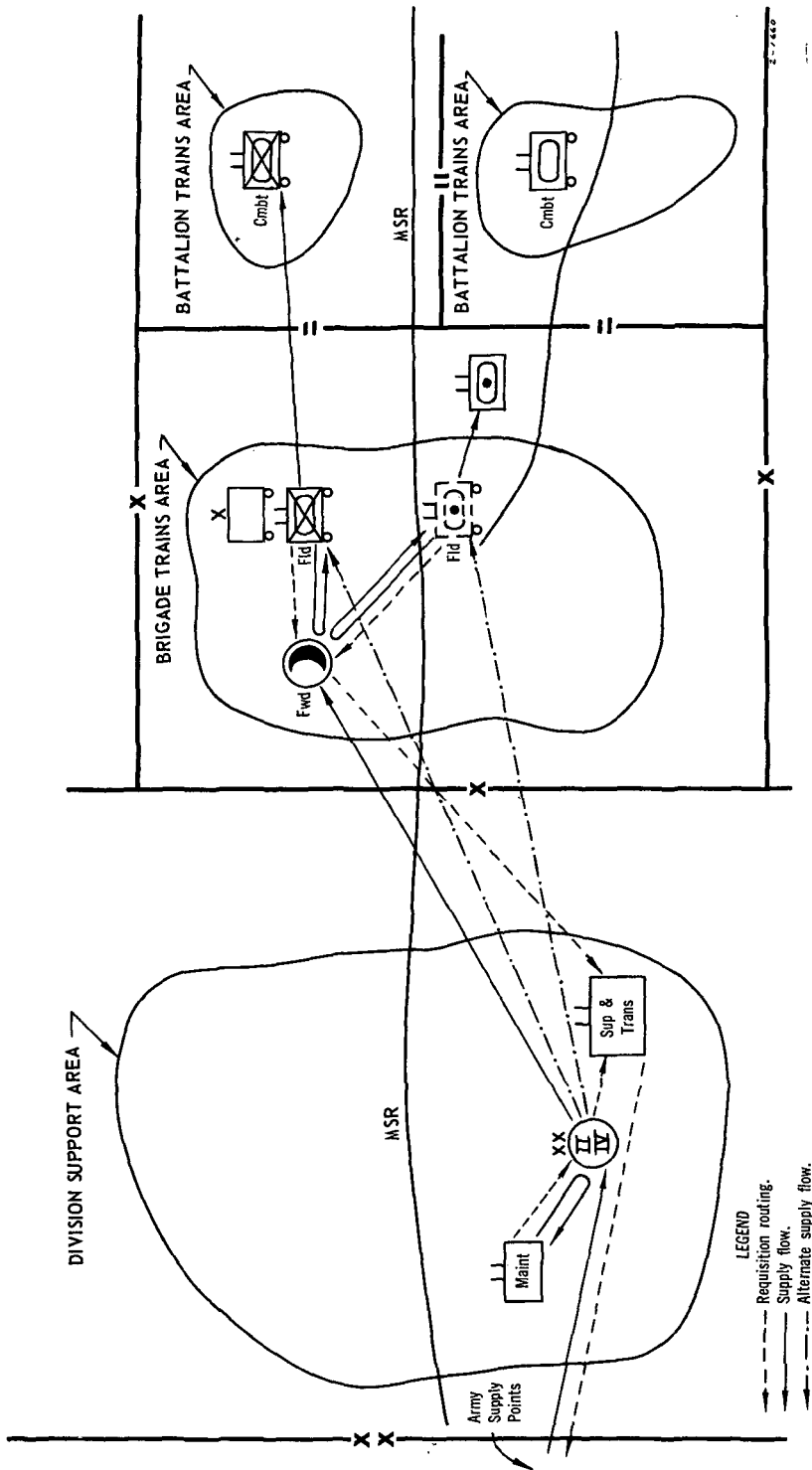


Figure 14. Flow diagram classes II and IV supplies.
(less medical supplies, repair parts and evacuated end items)

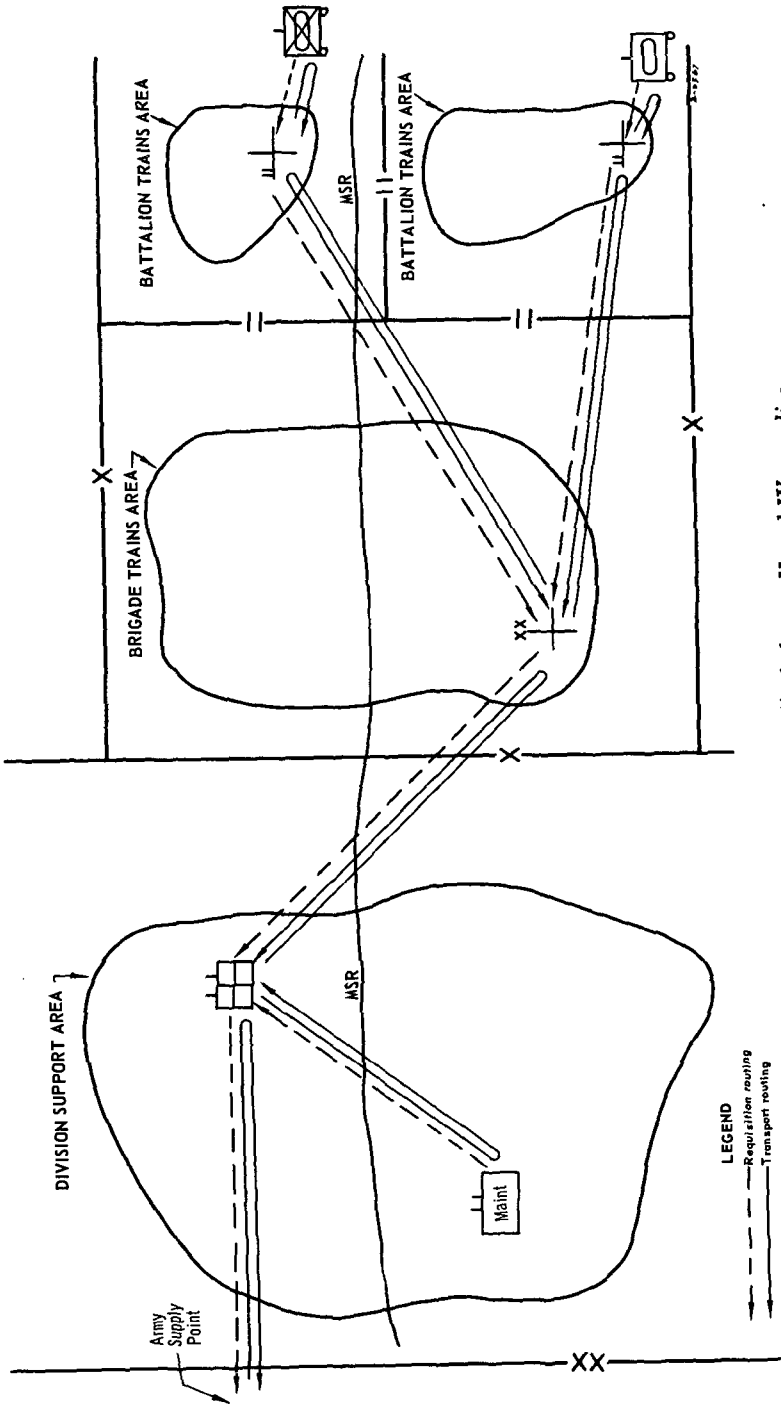


Figure 15. Flow diagram medical classes II and IV supplies.

class II distributing point in the division support area or, where appropriate, directly to the requesting unit. Large end items are delivered to specific destinations within the division as requested by the support command. Within the division, unit distribution of fast moving class II items is normally made directly to the requesting unit or to the forward class I distributing points of the supply and transport battalion operating in the brigade trains where the items are issued to the requesting unit.

- (2) The method of distributing medical supplies in combat is informal. The division medical supply point is normally established by the medical battalion at a site which is convenient and accessible to ambulances providing support to the majority of forward medical facilities. Requests are sent to the rear by vehicles, e.g., trucks, ambulances, and aircraft, or via radio or telephone, and supplies are dispatched forward by trucks, ambulances, or aircraft.

d. Reserves. The division does not ordinarily carry a large reserve of class II supplies. It does carry a small stock of fast moving class II supplies of all services in the division support area.

e. Facilities. Facilities for the supply of class II items consist of small holding areas operated by the supply and transport battalion and the medical battalion in the division support area. Chemical Corps items are normally distributed by a chemical combat support platoon attached to the supply and transport battalion. When the platoon is not attached, these items are distributed through the supply and transport battalion.

63. Class III

(fig. 16)

a. Requisitioning. Each supported unit of the division submits a periodic forecast for bulk and package (grease, oil, and lubricants) products to the division supply and transport battalion indicating any change to the previously experienced supply rates. The supply and transport battalion makes a similar report to the army supply facility supporting the division.

b. Distribution.

- (1) Supply point distribution is normally employed in supplying bulk class III to the division. However, field army may transport bulk POL to the division class III distributing points located in the division support area and in the brigade areas and there transfer the fuel to division tankers. When supply point distribution is used,

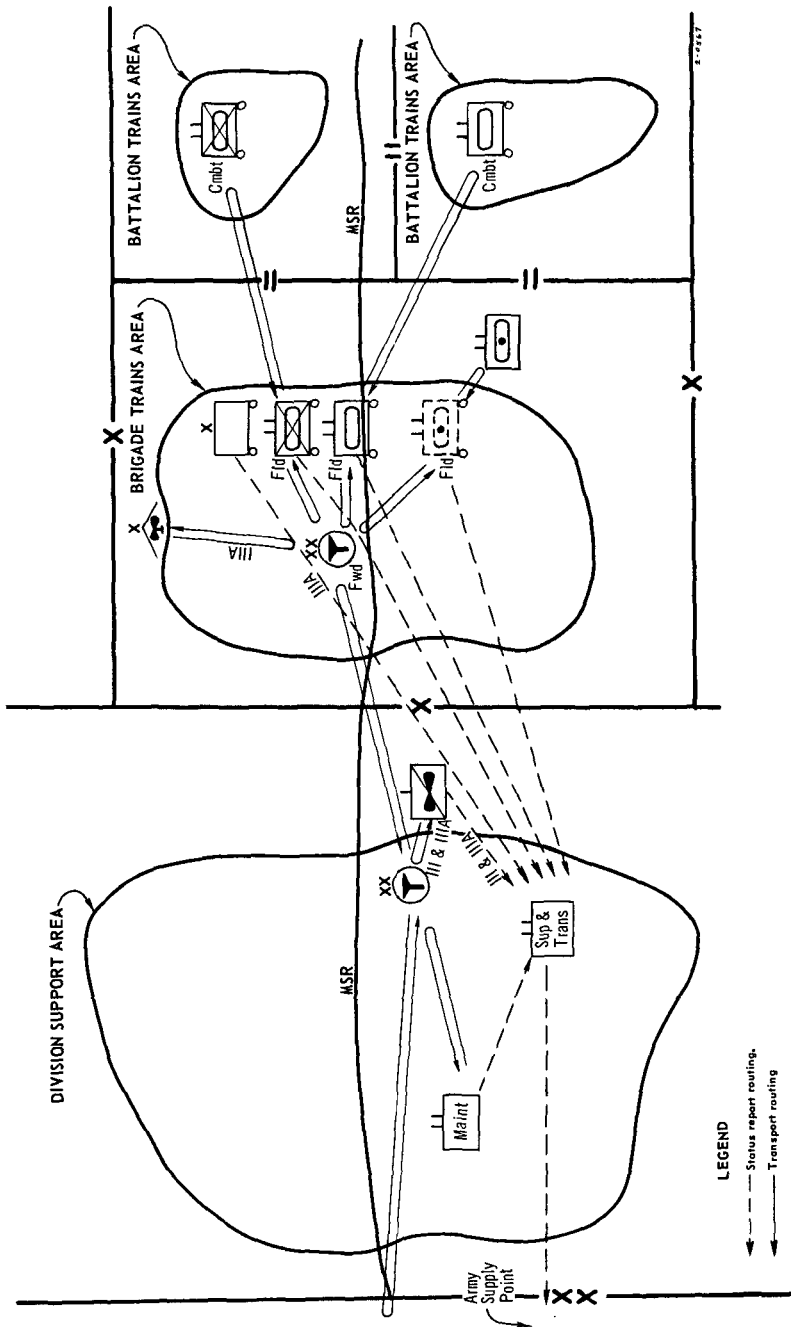


Figure 16. Flow diagram classes III and IIIA supplies.

the division transports its fuel from the army supply installation to the division distributing point using the tankers provided in the supply and transport battalion. When expedient, the battalion may exchange empty for full tankers at the army supply point. Unit distribution using the tankers is the normal method of distribution within the division. A portion of the tankers operate at the class III distributing point in the division support area to support units in the division rear area. A portion of the tankers may also be allocated to the forward class III distributing points in the brigade train areas in which case a combination of unit and supply point distribution is used. When major elements of the division are operating on independent missions, additional tankers are normally attached to them. Individual vehicles replenish their fuel at division mobile filling stations.

- (2) The organic tankers of the brigade headquarters, division artillery headquarters, aviation battalion, and air cavalry troop are used for class IIIA supply of their respective units. The supply and transport battalion provides tankers for the supply of all additional class IIIA requirements by attachment directly to the organizations having aircraft or by allocating tankers to the class III distributing point supporting these organizations.
- (3) The main reliance for class III supply in the airborne division is placed on packaged products delivered by air-drop or air-landing in the objective area. In garrison or in marshaling areas, the class III supplies are delivered to the division units by tank trucks from non-divisional agencies. If the airborne division is committed to a sustained ground role, it is normally augmented for supply of bulk class III.

c. Reserves. The division maintains a reserve of class III and IIIA in the fuel system supply point and by replenishing the loads of its tankers as rapidly as they are exhausted.

d. Facilities. The division supply and transport battalion normally operates class III distributing points in the division support area and in the brigade trains areas.

64. Class IV

(figs. 14 and 15)

Class IV requisitions are submitted through command channels for approval. Once command approval is given, class IV supply

is accomplished generally in the same manner as class II. Engineer fortification materials are normally delivered by the army units supporting the division and are carried as far forward as possible without transshipment. For supply and distribution of maps, see paragraph 67.

65. Class V

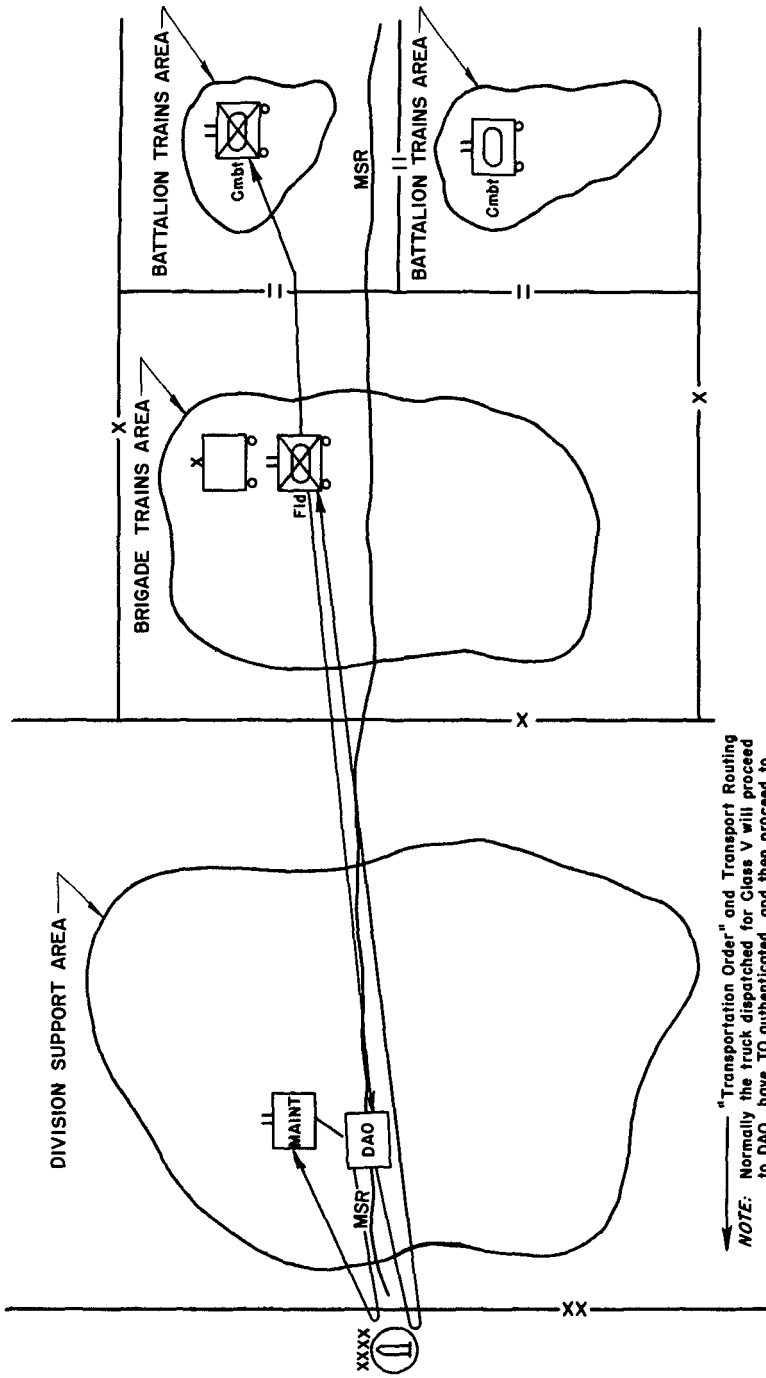
(fig. 17)

a. General. The division ammunition officer (DAO) is normally located at the support command command post or its ADSOC. However, the DAO or his representative is located conveniently to serve unit ammunition personnel. The location should be on or near the main supply route on a direct route between all using units and the supporting ammunition supply point in order to facilitate the authentication of transportation orders. If required by the road net or deployment of units, the location may be as far to the rear as the entrance to the supporting ammunition supply point.

b. Requisitioning. Requisitions (transportation orders) from using units are presented to the DAO or his representative for authentication. The normal basis for approval of the requisition is replacement of expenditure from the basic load. The DAO maintains records of the ammunition requisitioned by each unit and controls the issue of regulated items. All ammunition requisitions are validated by the DAO or his representative before they are presented at any army supply point or a division distributing point. Overall coordination and control of class V is accomplished through the support command command post or its ADSOC.

c. Distribution. Ammunition is normally supplied through supply point distribution. The ammunition vehicles of the using units return to the field army ammunition supply point to replenish the basic load of the unit. The airborne division operate mobile distributing points in the division support area. The composition of these stocks will depend on the nature of tactical operations and the availability of transportation.

d. Reserves. The airborne division carries small stocks of selected ammunition in the support command. The armored, infantry and mechanized divisions do not normally carry a reserve of class V. The only ammunition held in the divisions is in unit basic loads. In certain types of tactical operations divisions may be authorized to place ammunition on position for future use so that a unit can begin a subsequent operation with its basic load intact.



NOTE: "Transportation Order" and Transport Routing
 Normally the truck dispatched for Class V will proceed
 to DAO, have TO authenticated, and then proceed to
 C I V Supply Point.

Figure 17. Flow diagram class V supplies.

e. Supply of Chemical, Biological, and Nuclear Weapons. Supply procedures for these weapons are described in FM 101-31 and in FM 9-5.

66. Water

The division engineer battalion is capable of operating five water points. It is desirable that not more than four water points be operated at any one time to facilitate displacement and maintenance of the equipment. Water points are established in the most convenient locations available preferably in the brigade trains area. Units using unit transportation, draw water from the nearest water point.

67. Maps

The division supply and transport battalion obtains maps for the division from the supporting map depot and distributes them to using units. Quantities are based on army table of map allowances in FM 101-10.

Section II. ADMINISTRATIVE TRANSPORTATION

68. General

(fig. 18)

Employment of vehicles in the division supply and transport battalion is normally controlled centrally. To the extent practicable, every transportation dispatch is made to serve two purposes. For example, trucks which transport supplies forward to the brigade areas or to the units are used to evacuate salvage, prisoners of war, and the dead.

69. Transportation Means

a. Trucks. The vehicles of the supply and transport battalion perform most of the division administrative transportation tasks. In the infantry and airborne divisions, augmentation of transportation is required to move the division by motor in a single lift. This transportation is normally attached directly to tactical units.

b. Aircraft (fig. 19). The aviation battalion is organized to provide aircraft support to the division to include limited logistical airlift support. Its use for logistical support is generally confined to tasks for which it is uniquely suited, and it is employed in accordance with the division commander's priorities and policies.

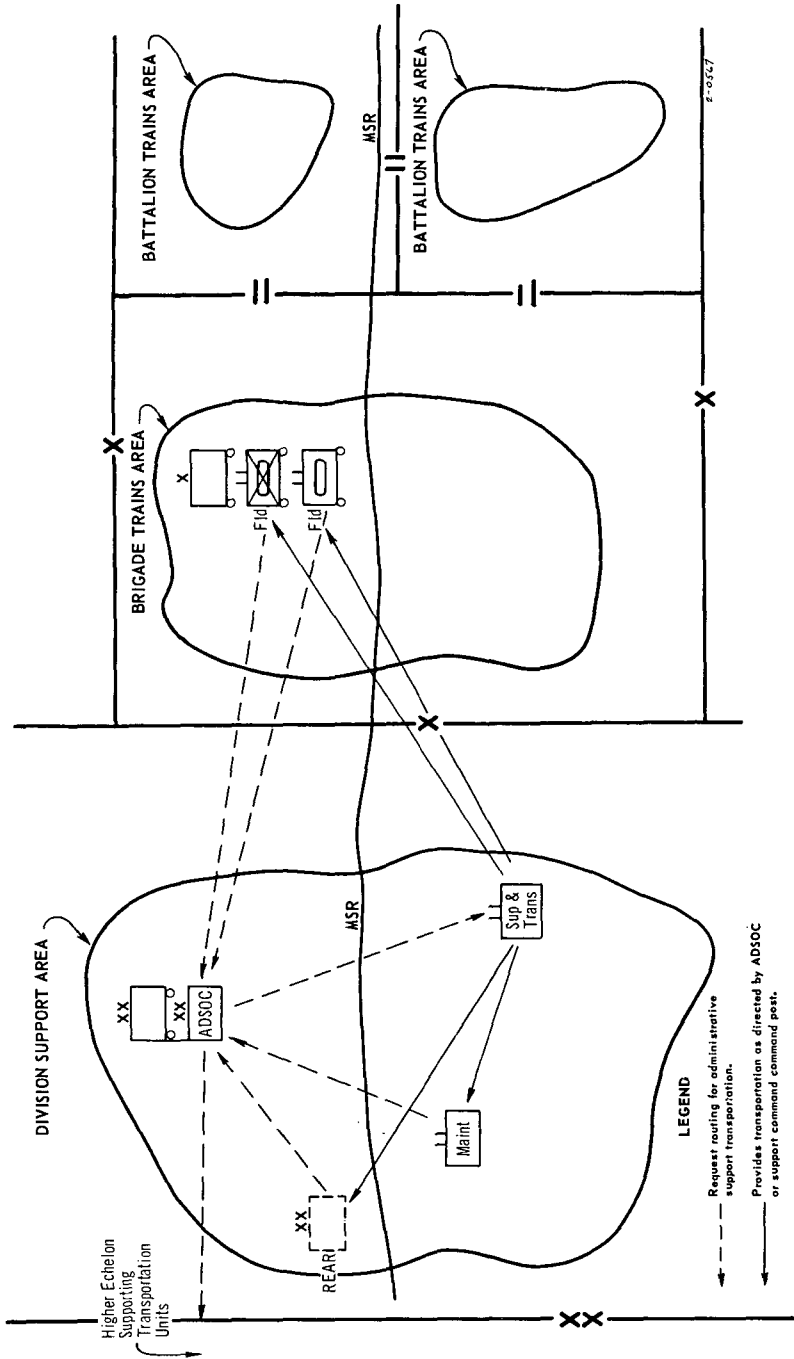


Figure 18. Flow diagram for administrative support transportation request.

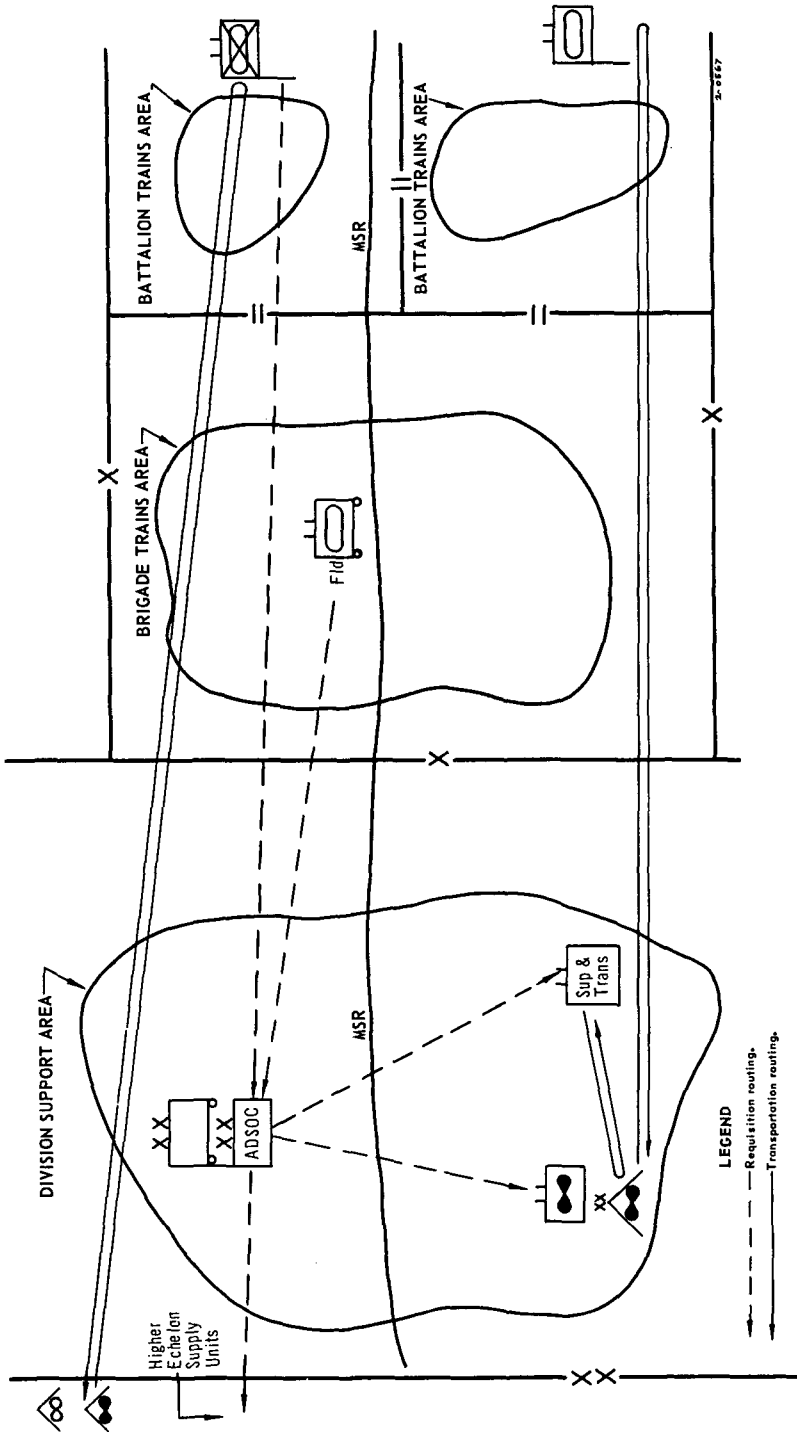


Figure 19. Flow diagram serial supply.

70. Allocation and Control

a. Transportation of the supply and transport battalion is normally retained under control of the support command. In a fast-moving situation, or when a tactical unit is operating on a semi-independent mission, transportation elements may be attached to lower echelons to provide administrative support transportation.

b. The employment of transportation for administrative support is controlled by the support command commander through the ADSOC if established. Transportation may be allocated to the support command units supporting the brigades or to the battalion trains to assist in supply operations.

Section III. FIELD MAINTENANCE

71. Maintenance

(fig. 20)

The maintenance battalion of the support command is a direct support unit which performs for the division the inspection of organizational maintenance, repair parts supply, and third echelon repair of all equipment except cryptographic, electrical accounting, quartermaster air, and medical. Maintenance of cryptographic equipment is performed by the signal battalion, maintenance of electrical accounting equipment is performed by the administration company, and medical equipment is maintained by the medical battalion. The maintenance battalion is organized, equipped, and trained for close support of combat units of the division. Normally, a forward support company is placed in support of each brigade and operates in the brigade trains area. This company can be augmented with elements of the headquarters and main support company to provide balanced support.

72. Repair Parts

(fig. 20)

Except for those items provided by the transportation aircraft maintenance company, the main support company serves as a base of supply for all repair parts, maintenance supplies, and maintenance float items required for accomplishment of the battalion's maintenance and maintenance supply missions. It obtains and distributes the repair parts and maintenance supplies required by its own maintenance activities, obtains and issues maintenance float

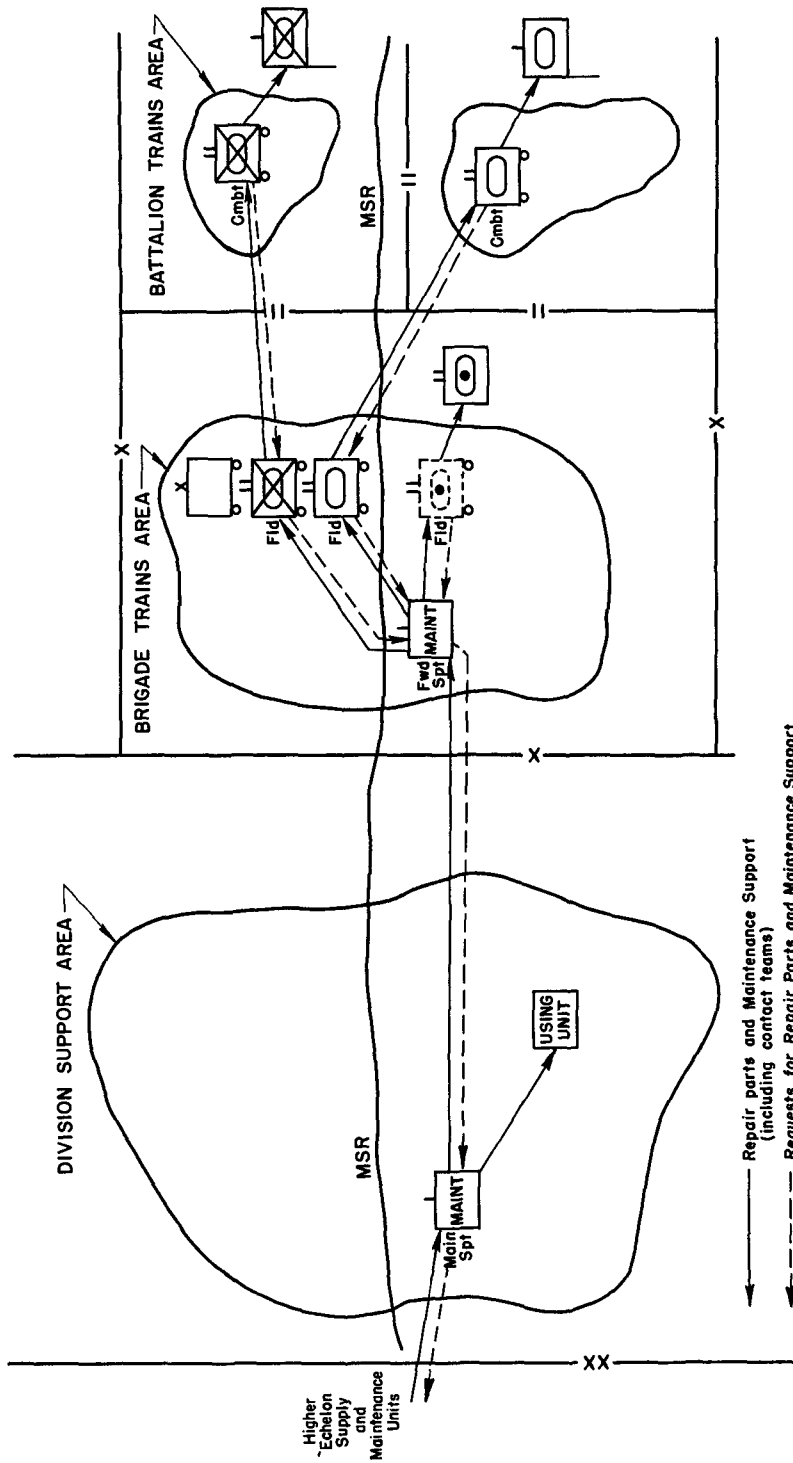


Figure 20. Flow diagram classes II and IV repair parts and maintenance support (less aircraft).

items, provides the repair parts and maintenance supplies required by the forward support companies, and issues repair parts and maintenance supplies to the divisional units it supports. Each forward support company maintains a stock of supplies to support its maintenance activities and carries a stock of fast moving repair parts and maintenance supplies for issue to supported units. Direct exchange is used to the maximum.

73. Evacuation Flow

(fig. 21)

a. Recovery and evacuation to axis of supply and evacuation, or to collecting points, is the responsibility of all division units. Each unit will accomplish the recovery and evacuation within its capability, and request assistance from the maintenance battalion when required. The physical movement of aircraft is the responsibility of the transportation aircraft maintenance company. To receive, segregate, and make proper disposition of recovered equipment, maintenance collecting points are established with the division area. Those in the forward areas are operated by the forward support companies of the maintenance battalion. The main division maintenance collecting point is operated by the main support company. All recovered equipment except aircraft and aircraft items will be evacuated to a maintenance collecting point. Aircraft and aircraft items will be evacuated through aircraft maintenance channels to the main support section of the transportation aircraft maintenance company.

b. Although the maintenance battalion has primary responsibility of operating the maintenance collecting points, the supply and transport battalion is responsible for furnishing personnel necessary to assist in identification and segregation of incoming material.

c. The supply and transport battalion is responsible for establishing salvage collecting points. These will normally be within the maintenance collecting points or in close proximity thereto. The salvage collecting points assume responsibility for items for which the maintenance battalion does not have maintenance responsibility, serviceable items to be returned to supply channels, and scrap material. Physical movement is not a condition essential to the assumption of control. Serviceable and unserviceable items for which the maintenance battalion is not responsible will be evacuated to appropriate division maintenance units for appropriate action (e.g., cryptographic items to the division signal battalion).

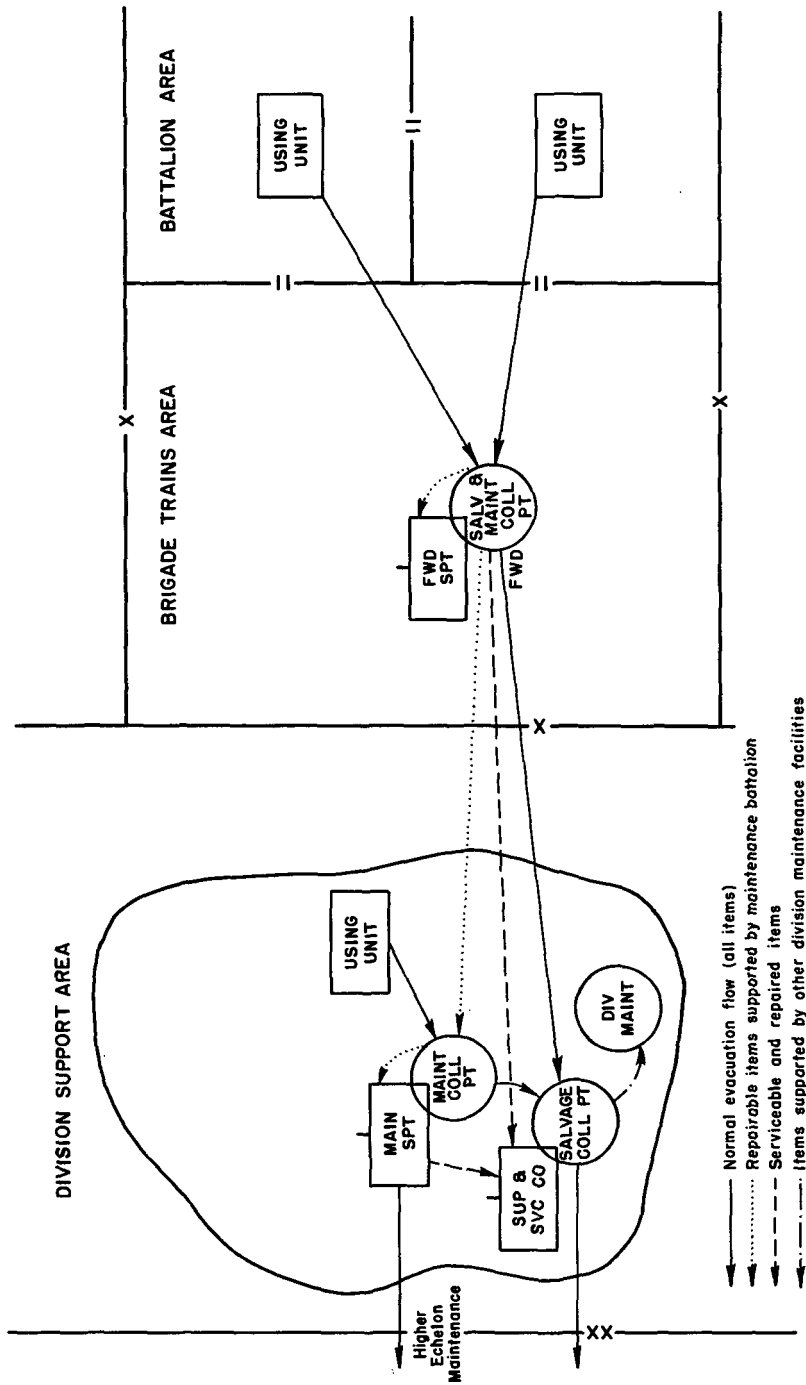


Figure 21. Evacuation flow.

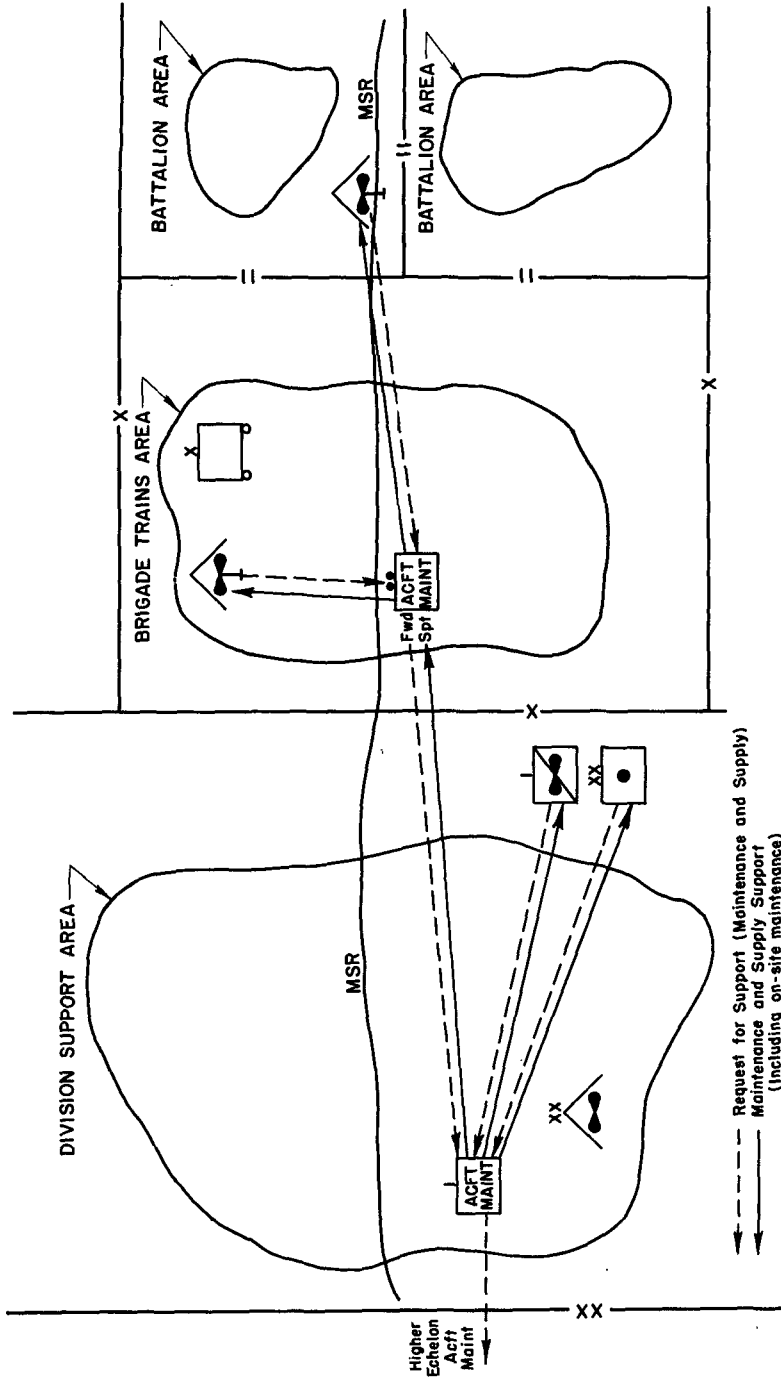


Figure 22. Flow diagram aircraft maintenance and supply support.

74. Aircraft Maintenance and Supply

(fig. 22)

Army aircraft maintenance responsibilities within the division encompass first, second and third-echelon maintenance and aircraft repair parts supply. First-echelon maintenance is performed by the aircraft crews assigned to the aircraft. Second-echelon maintenance is performed by the parent unit, normally at the unit's base airfield, although repair teams may be sent to other airfields or heliports to perform specific maintenance tasks. Third echelon maintenance and supply support by the aircraft maintenance company of the maintenance battalion at division air fields and on site.

Section IV. MEDICAL SERVICE

75. Concept

If the tactical situation permits, some patients with short term medical illnesses may be retained for 2 or 3 days in clearing stations to prevent their loss from the division. The treatment given by division medical service is designed to return the soldier to duty within a short period of time or to prepare him for further evacuation. Patients are normally evacuated from forward areas by higher echelon medical units.

76. Medical Services

(fig. 23)

a. The elements of the medical battalion provide close and continuous medical support for units operating in the division area in accordance with the tactical situation. The headquarters and support company of the medical battalion normally operates in the division support area. The medical battalion normally supports the brigades by placing a medical company in support of, or attached to each committed brigade. Normally no more than two division clearing stations are in operation in brigade areas at any given time. The medical company in support of a brigade is normally located in or near brigade trains. The medical company normally will provide area support in addition to its mission of supporting the brigade. A medical company consists of a company headquarters, a clearing platoon and an ambulance platoon. The headquarters and support company contains a clearing platoon and ambulance platoon identical with those in the medical company.

b. Each clearing platoon can establish a division clearing station and receive patients from the battalion aid stations. Each

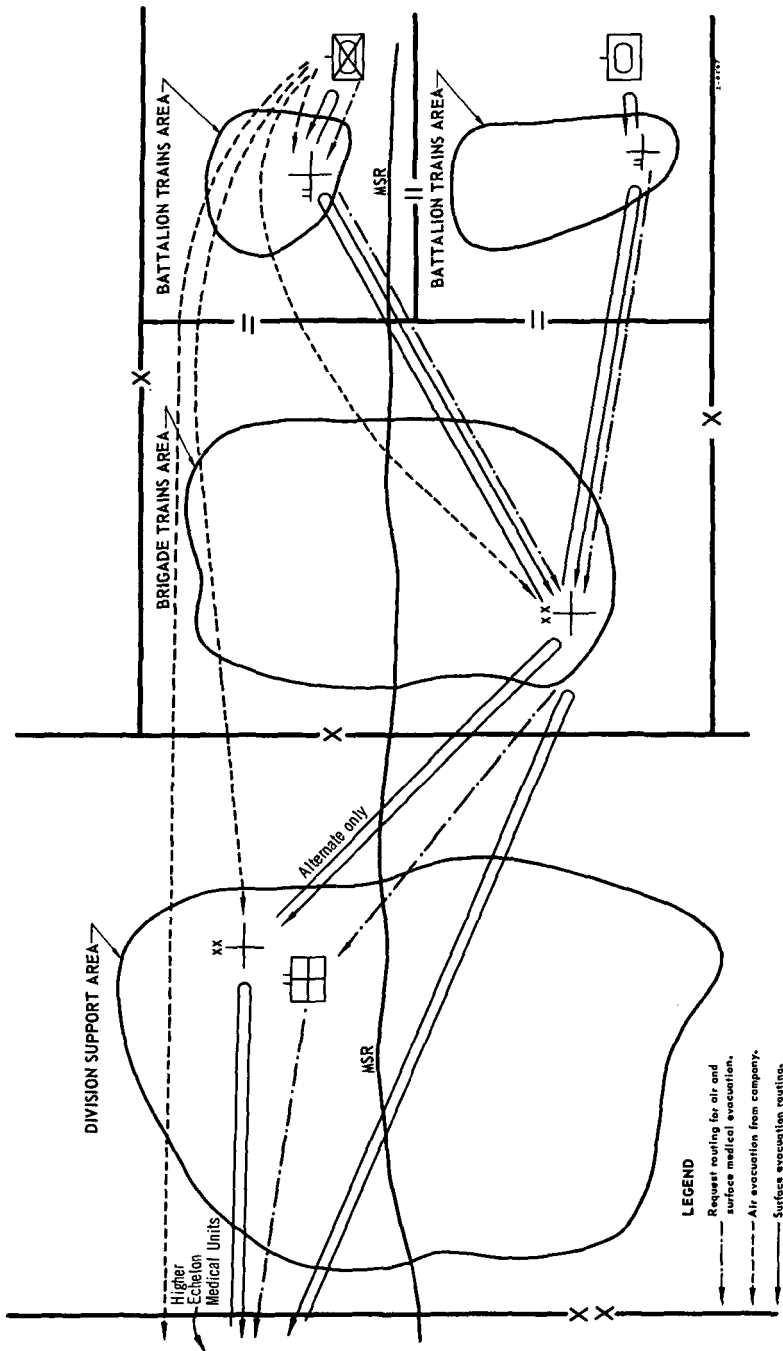


Figure 23. Flow diagram patient evacuation.

clearing platoon can be divided into two identical clearing stations for displacement and short duration operations. The medical company displaces by leapfrogging the clearing stations. The support company clearing platoon may be used to provide a clearing station for area support of the division support area and other units operating in the division rear area, to reinforce or replace another clearing platoon, to provide emergency aid stations for area damage control, or to support a separate task force. When the clearing and ambulance elements of the headquarters and support company are committed in a role other than area support to the rear area troops, reinforcement of the division medical battalion by field army medical support is required.

c. Ambulance platoons operate in close association with the clearing platoons. The ambulance platoons transport patients from unit aid stations to the clearing station or, in an emergency, to the field army treatment facility supporting the division. Ambulance platoon leaders maintain contact with the unit surgeons in the brigade they support.

d. Limited aeromedical evacuation support is available from the aviation battalion.

e. For details of division medical service, see FM 8-15.

Section V. MISCELLANEOUS SERVICES

77. Bath and Clothing Exchange Service

The supply and transport battalion provides bath service to the troops of the division. The bath section of the supply and services company can serve troop units in nine separate locations. When arrangements can be made for additional operating personnel and clothing stocks, the supply and transportation battalion may establish a clothing exchange service at the bath points.

78. Graves Registration

(fig. 24)

a. Concept. The dead are normally evacuated from the division area for interment. Isolated burials in the division area are resorted to only as an emergency measure.

b. Collection and Evacuation.

- (1) When in combat, the division is augmented with a graves registration platoon attached to the supply and services company of the supply and transportation battalion.

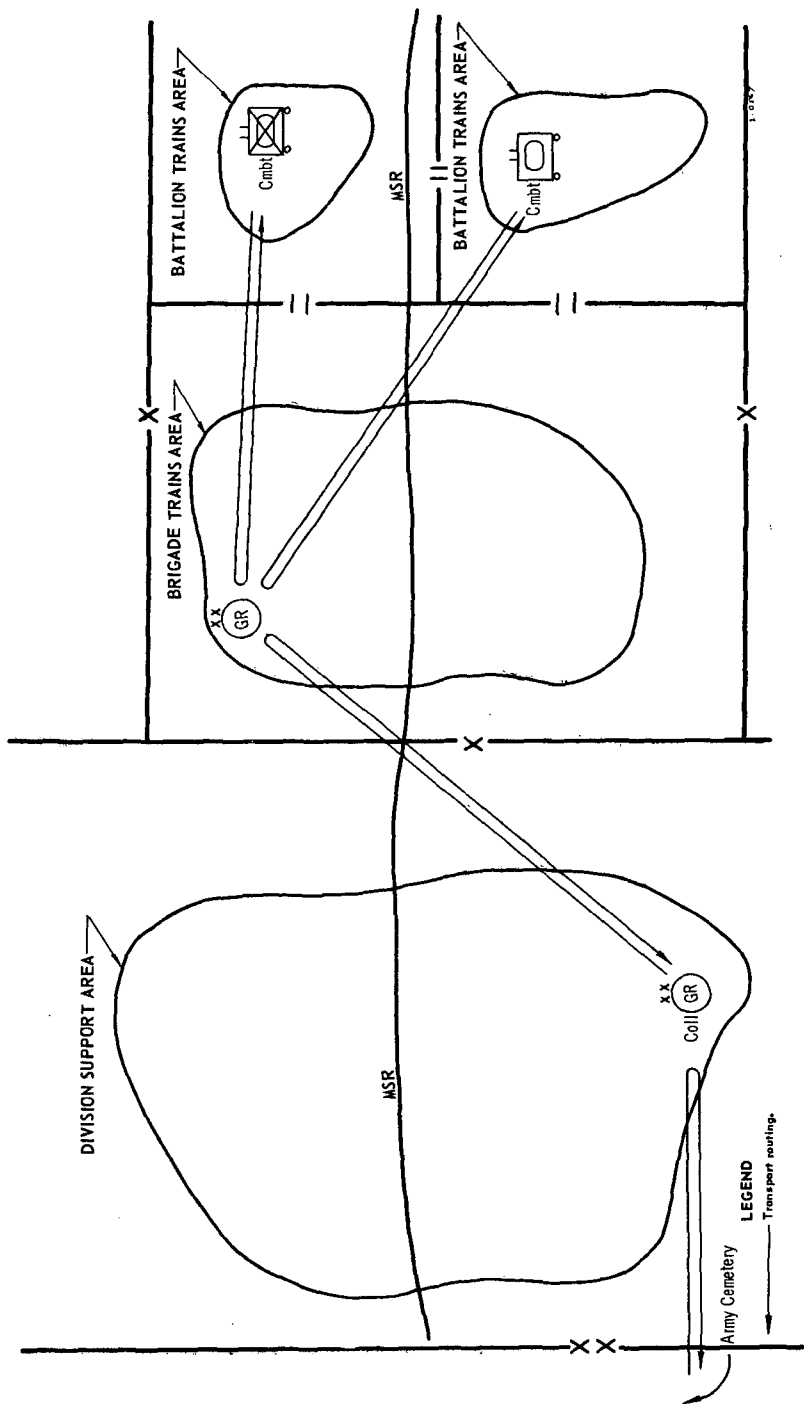


Figure 24. Flow diagram evacuation of the dead.

- (2) The division collecting, identification, and evacuation section of this platoon operates the division graves registration collecting point. The graves registration collecting point is located a short distance from the main supply route near the supply and services company in the division support area. It is isolated from other activities. Evacuation of the dead from division clearing stations to the graves registration collecting points is the responsibility of the graves registration platoon.
- (3) Collecting and evacuation sections of the platoon establish collecting points in the brigade trains area to receive the dead from combat units, identify remains and arrange for the evacuation of the remains to the division graves registration collecting point. Combat units are responsible for recovery and evacuation to the nearest collection point.
- (4) The platoon provides technical advice and, when possible, assists the combat units in evacuation of the dead.
- (5) The dead are identified as early and as fully as possible. They are normally evacuated with their effects from forward areas in transportation returning from other tasks. Evacuation of the dead from aid stations to the graves registration collecting points is the responsibility of the unit to which the aid station is assigned. In a nuclear situation, special graves registration task groups may be formed and provided with sufficient transportation means to evacuate the dead promptly.

c. Isolated Burials. Isolated burials are fully documented and reported promptly through graves registration channels. Details of graves registration service are covered in FM 10-63, FM 100-10, FM 101-5, and AR 638-30.

79. Evacuation of Captured Materiel

a. Captured materiel is evacuated to the nearest maintenance collecting point. The collecting point will report receipt of the materiel to the division G2 and request disposition instructions.

b. Materiel such as ammunition and other items suspected of being dangerous will not be moved. They will be guarded, if practical, and reported expeditiously to the division ammunition officer.

c. Usable captured material may be distributed through normal supply channels upon approval of the division commander. Equipment, fuels, lubricants, and ammunition should be examined and approved prior to being used.

d. Captured medical supplies are handled in accordance with the rules of land warfare. They are turned in to medical supply installations for inspection prior to reissue or use. Such supplies are of particular value for use by prisoners of war in treating their sick and wounded and in fulfilling civil affairs requirements.

CHAPTER 6

LOGISTICAL SUPPORT FOR SPECIAL OPERATIONS

Section I. AIRBORNE OPERATIONS

80. General

Principles of logistical planning in support of airborne operations are similar to those for other combat operations. However, additional considerations which affect development of detailed plans included facilities available for marshalling; quantities of supplies to be delivered to departure airfields and the time of delivery; number, size, type, and loading characteristics of aircraft available; materials handling equipment available; distance between departure airfields and drop/landing zones in the objective area; and the characteristics of the proposed airheads, including road net, storage airlanding and other facilities. Additionally, the duration of automatic followup supply; estimate of supplies, equipment, manpower, and materials available from local sources in the objective area and the amount necessary to meet minimum civilian requirements; climate and weather; amount and type of transport available within the objective area; and the capabilities and limitations of combat support elements in departure and objective areas are important considerations. Details are contained in FM 57-10.

Section II. SITUATIONS SHORT OF WAR

81. General

The strategic deployment of the division overseas may be restricted by transportation limitations and the time involved. These restrictions may be minimized by the forward stockage of supplies and equipment in critical areas, thus reducing the tonnages which would otherwise have to be transported with the unit. When employed independently, the division is normally reinforced to insure sustained logistical support.

82. Logistical Support

a. Certain aspects of logistical support for operations in situations short of war require special consideration. If the division

is relatively concentrated, the logistical support problem is minimized; however, when its elements are widely deployed, the distances involved present conflicting requirements for transportation and security. The desirability of concentrating to facilitate security of administrative units and supplies is balanced against the need to fragment distributing points and maintenance units to make support readily available to the user and to reduce transportation and distribution requirements. In addition, in a situation short of war on foreign soil, specific limitations may be placed on the use of roads, buildings, railroads, airspace, installations, and terrain. Limitations on the availability of security troops and transportation may be the controlling factors.

b. Logistical support planning for combat operations in event of war must visualize and provide for area damage control and for rear area security requirements. Intelligence efforts of the division should be directed toward revealing the enemy's potential for infiltration operations and nuclear warfare, both of which offer major threats to division rear area operations.

c. Administrative units and supplies are located to support known and contingent operational requirements and to minimize the need for major relocation to support the various operation plans.

d. Logistical support units are capable of providing humane relief services such as the issue of food and clothing and medical treatment of the population. Assistance of this type, when units and supplies are available, may facilitate accomplishment of the division mission.

Section III. OPERATIONS AGAINST IRREGULAR FORCES

83. General

a. Logistical support installations are located to support dispersed operations. When operations are conducted against guerrilla redoubts and safe areas, the frequently difficult terrain hinders supply and evacuation of division elements. Maximum use is made of air transport. When supply by other means is infeasible, the division resorts to hand carry. This system is slow and costly in manpower. Consequently, maximum use is made of local labor.

b. A constant concern of the division in antiguerrilla operations is the vulnerability of the division administrative elements and portions of the division's rear. Since guerrilla forces generally live off the land, special precautions are taken to prevent the

enemy from overcoming friendly logistical facilities and confiscating supplies and ammunition.

84. Logistical Considerations

a. Each unit of the division provides for its own local security against guerrilla action to the extent of its capabilities. Special consideration may have to be given to providing means for the protection of nuclear munitions.

b. Support units are located to meet the requirements peculiar to their special functions in support of combat elements and, when feasible, to contribute to mutual defense. Support elements not required in the vicinity of tactical elements are normally located in the division support area for security and defense.

c. In situations when guerrillas are especially active against division lines of communications and employment of air transport is not feasible combat unit escort may be provided supply convoys.

APPENDIX I

REFERENCES

FM 1-5	Army Aviation Organization and Employment
FM 1-15	Aviation Battalion, Infantry, Airborne, Mechanized, and Armored Divisions.
FM 1-60	Army Aviation Air Traffic Operations Tactical
FM 1-100	Army Aviation
FM 3-5	Tactics and Techniques of Chemical, Biological, and Radiological (CBR) Warfare.
FM 5-135	Engineer Battalion, Infantry, Mechanized, and Armored Divisions.
FM 5-136	Engineer Battalion, Airborne Division
FM 6-20-1	Field Artillery Tactics
FM 6-20-2	Field Artillery Techniques
FM 7-11	Rifle Company, Infantry, Airborne Infantry, and Mechanized Infantry.
FM 7-19	Combat Support Company, Infantry Division Battle Group.
FM 7-21	Headquarters and Headquarters Company, Infantry Division Battle Group.
FM 7-40	Infantry and Airborne Division Battle Groups
FM 8-15	Division Medical Service, Infantry, Airborne, Mechanized and Armored Divisions.
FM 8-35	Transportation of the Sick and Wounded
FM 8-55	Army Medical Service Planning Guide
FM 9-1	Ordnance Service in the Field
FM 9-5	Ordnance Ammunition Service
FM 9-30	Maintenance Battalion, Infantry, Airborne, Mechanized, and Armored Divisions.
FM 10-33	Air Equipment Support Company
FM 10-50	Supply and Transport Battalion, Infantry, Airborne, Mechanized, and Armored Divisions.
FM 10-63	Handling of Deceased Personnel in Theaters of Operations.
FM 11-50	Signal Battalion, Infantry, Mechanized, and Armored Divisions.
FM 11-57	Signal Battalion, Airborne Division
FM 12-11	Administration Company, Infantry, Airborne, Mechanized and Armored Divisions.

FM 17-1	Armor Operations
FM 17-15	Tank Units, Platoon, Company, and Battalions
FM 17-30	Armored Division Brigade
FM 17-36	Armored Cavalry Units, Platoon, Troop, and Squadron.
FM 19-10	Military Police Operations
FM 19-15	Civil Disturbances and Disasters
FM 19-20	Military Police Investigations
FM 19-25	Military Police Traffic Control
FM 19-40	Handling Prisoners of War
FM 19-90	The Provost Marshal
FM 21-5	Military Training
FM 21-6	Techniques of Military Instruction
FM 21-18	Foot Marches
FM 21-26	Map Reading
FM 21-30	Military Symbols
FM 21-40	Small Unit Procedures for Nuclear, Biological, and Chemical Warfare.
FM 21-41	Soldier Handbook for Nuclear, Biological, and Chemical Warfare.
FM 21-48	Training Exercises and Integrated Training in Chemical, Biological, and Nuclear Warfare.
FM 22-100	Military Leadership
FM 24-1	Tactical Signal Doctrine
FM 24-17	Tactical Communications Center Operations
FM 24-18	Field Radio Techniques
FM 25-10	Motor Transportation Operations
FM 26-5	Interior Guard
FM 27-10	The Law of Land Warfare
FM 30-5	Combat Intelligence
FM 30-7	Combat Intelligence, Battle Group, Combat Command, and Smaller Units.
FM 30-9	Military Intelligence Battalion Field Army
FM 30-10	Terrain Intelligence
FM 30-15	Intelligence Interrogation (U)
FM 30-16	Technical Intelligence
FM 30-19	Order of Battle Intelligence
FM 30-20	Aerial Surveillance—Reconnaissance, Field Army.
FM 30-101	Aggressor, The Maneuver Enemy
FM 30-102	Handbook on Aggressor Military Forces
FM 30-103	Aggressor Order of Battle
FM 31-10	Barriers and Denial Operations
FM 31-12	Army Forces in Amphibious Operations
FM 31-15	Operations Against Irregular Forces

FM 31-21	Guerrilla Warfare and Special Forces Operations.
FM 31-21A	Guerrilla Warfare and Special Weapons Operations (U).
FM 31-25	Desert Operations
FM 31-30	Jungle Operations
FM 31-40	Tactical Cover and Deception (U)
FM 31-50	Combat in Fortified Areas and Towns
FM 31-60	River Crossing Operations
FM 31-70	Basic Cold Weather Manual
FM 31-71	Northern Operations
FM 31-72	Mountain Operations
FM 32-5	Communications Security (U)
FM 33-5	Psychological Warfare Operations
FM 41-5	Joint Manual of Civil Affairs Military Government.
FM 41-10	Civil Affairs Military Government Operations
FM 41-15	Civil Affairs Military Government Units
FM 44-1	Air Defense Artillery Employment
FM 44-1A	Air Defense Artillery Employment (U)
FM 44-97A	Air Defense Artillery Missile Battalion (Hawk) (U).
FM 52-10	Corps and Army Support of Divisions
FM 55-6	Transportation Services in Theaters of Operations.
FM 57-10	Joint Airborne Operations
FM 57-35	Airmobile Operations
FM 61-100	The Division
FM 100-1	Doctrinal Guidance (U)
FM 100-5	Field Service Regulations—Operations
FM 100-10	Field Service Regulations—Administration
FM 101-5	Staff Officers Field Manual—Staff Organization and Procedures.
FM 101-10	Staff Officers Field Manual—Organization, Technical, and Logistical Data.
FM 101-31	Staff Officers Field Manual—Nuclear Weapons Employment (U).
TC 3-7	Capabilities and Employment of Biological Agents (U).
TC 3-10	Defense Against V-Agents
TC 5-2	Employment of Mobile Assault Bridging
TC 17-7	Aerial Surveillance Platoon, Division and Armored Cavalry Regiment (U).
TC 100-1	Employment of Nuclear Weapons (U)

TC 101-1	Prediction of Fallout and Radiological Monitoring and Survey.
TC 101-2	Tactical Operations Centers
TM 3-200	Capabilities and Employment of Toxic Chemicals.
TM 57-210	Air Movement of Troops and Equipment
AR 220-10	Preparation for Oversea Movement of Units (POM).
AR 320-5	Military Terms, Abbreviations, and Symbols, Dictionary of United States Army Terms.
AR 320-50	Authorized Abbreviations and Brevity Codes
AR 638-30	Graves Registration Organization and Functions in Support of Major Military Operations.
DA Pam 108-1	Index of Army Motion Pictures, Filmstrips, Slides, and Phono-Recordings.
DA Pam 310-series	Military Publications Indexes
JCS Pub 1	Dictionary of United States Military Terms for Joint Usage.
JCS Pub 2	Unified Action Armed Forces (UNAAF)

APPENDIX II
REAR AREA SECURITY SOP

(Classification)

52d Mech Div Spt Comd
Fort Leavenworth, Kansas
15 September 19____

Annex _____ (Rear Area Security) to SOP No. _____

1. PURPOSE

- a. To estb procedure for rear area scety planning and op wi div spt area.
- b. Subor unit SOP will conform.

2. GENERAL

a. Each instl and unit CO in the div spt area, to include div rear ech, is resp for local scety of its own area. Subor units will prepare alternate plans for org into provisional rifle cos, plats, and sqds. This org will be used in the event of a priority 3 alert. All pers will receive weapons, infantry sqd and platoon tactical training, and alert drills on a continuing basis. Plans for local scety will be coord with the area damage control and scety element (ADCSE), ADSOC.

b. Alert conditions :

- (1) Priority 1: First contact made against en force attacking div spt area. Priority 1 mbl scety det alerted and employed. Admin spt instl and units continue to function. Priority 2 mbl scety det are alerted.
- (2) Priority 2: Priority 2 mbl scety det are committed. Admin spt instl and units continue to function wi cpbl.
- (3) Priority 3: Admin spt instl and units cease functioning, full mobilization into provisional org and committed against en threat.

3. INTELLIGENCE

a. Info of any en atk (irregular forces, nuclear, gnd atk, air atk, or any other) will be rept to ADCSE, ADSOC immed.

(Classification)

(Classification)

b. Counterintelligence is of supreme importance in preventing en from gaining surprise. All pers in div spt area will be checked for positive identity at the entrance of each instl. Atch MP det will assist in checking identity of pers on the MSR.

4. OPERATIONS

a. General. Co, div spt comd, is resp for scety of div spt area. Co, spt comd, through the ADCSE will issue the div spt area overlay type rear area defense OPORD showing local scety guard posts, outguards, roadblocks to be installed, key terrain to be defended, mbl scety force assy areas, and other coordinating measures. Resp and tasks to individuals and subor elms are as shown in *b* through *h* below.

b. CO, mbl scety force:

- (1) XO, spt comd, is designated as the CO, spt comd mbl scety force.
- (2) CO, mbl scety force, is resp for empl of priority 1 and 2 mbl scety dets as provided for in spt comd rear area defense order (plan).
- (3) When div rear ech is sep from remainder of div spt area, CO of admin co mbl scety dets will be designated by OIC, rear ech.

c. HQ co and band:

- (1) Provide local scety for spt comd CP and ADSOC.
- (2) Provide, on a 30 min alert status, one priority 1 mbl scety det consisting of fol pers and equip:
 - (a) One off or WO.
 - (b) Three rifle sqds, one NCO, seven EM each.
 - (c) One wpn sqd, four EM each.
 - (d) One MG 7.62-mm, GP.
 - (e) One trk, 1 $\frac{1}{4}$ -ton, with radio AN/VRC-8¹.
 - (f) One trk, 2 $\frac{1}{2}$ -ton.

d. Admin co:

- (1) OIC, div rear ech, resp for local scety.
- (2) Provide on a 30 min alert status one priority 1 mbl scety det consisting of fol pers and equip:
 - (a) One off or WO.

¹ Provided by HQ sec.

(Classification)

(Classification)

- (b) Three rifle sqd, one NCO, nine EM each.
 - (c) Two wpns sqd, four EM each.
 - (d) One 3.5 in RL sqd, three EM each.
 - (e) Two MG 7.62-mm, GP.
 - (f) One RL 3.5 in.
 - (g) One trk, 1/4-ton with radio AN/VRC-10.
 - (h) One trk, 3/4-ton.
 - (i) One trk, 2 1/2-ton.
- (3) Provide on 60 min alert status one priority 2 mbl scety det with same org and equip as priority 1, mbl scety det.
- e. Med Bn:
- (1) Resp for local scety of div spt area clr station.
 - (2) Provide one each med evac team org as fol, to accompany each priority 1 mbl scety det:
 - (a) One sr med aidman.
 - (b) Two litter bearers.
 - (c) One trk, amb, 3/4-ton.
- f. Sup and trans bn:
- (1) Provide local scety for own instl.
 - (2) Provide on a 30 min alert status one priority 1 mbl scety det consisting of fol pers and equip:
 - (a) One off or WO.
 - (b) Three rifle sqd, one NCO, nine EM each.
 - (c) Two wpn sqd, four EM.
 - (d) One 3.5 in RL sqd, three EM.
 - (e) Two 7.62-mm MG, GP.
 - (f) One trk, 1/4-ton with radio AN/VRC-10.
 - (g) One trk, 3/4-ton.
 - (h) One trk, 2 1/2-ton.
 - (3) Provide on 60 min alert status one priority 2 mbl scety det with same org and equip as priority 1, mbl scety det. Trk, 1/4-ton with radio AN/VRC-8, may be substituted for trk, 1/4-ton, with radio AN/VRC-10.
- g. Maint bn:
- (1) Provide local scety for own instl.
 - (2) Provide on a 30 min alert status one priority 1 mbl scety det consisting of fol pers and equip:

(Classification)

(Classification)

- (a) One off or WO.
- (b) Three rifle sqd, one NCO, nine EM each.
- (c) One wpn sqd, four EM.
- (d) One 3.5 in RL sqd, three EM.
- (e) One 7.62-mm MG, GP.
- (f) One trk, 1/4-ton, with radio AN/VRC-47.
- (g) One trk, 3/4-ton.
- (h) One trk, 2 1/2-ton.

h. Secty. Wi the div spt area specific areas of op for each elm of spt comd will be designated by CO, spt comd. Specific loc of admin spt instl wi ea subor units area of op is designated by CO concerned. Primary consideration must be given to the defensive nature of the terrain and the instl or unit's ability to accomplish its msn. A min of 2,000 meter interval will be maintained between instl listed below :

- (1) ADSOC.
- (2) Spt comd CP.
- (3) Div rear ech (when a part of div spt area).
- (4) Div spt area clr sta.
- (5) Sup and trans bn CP (div sup office).
- (6) C1 III distr pt.
- (7) C1 V mbl distr pt (when estb).
- (8) Veh pack (trans and mtr trans co).
- (9) Each functional maint instl (mech, elec, armament).
- (10) Div instrumented afd.

5. ADMINSTRATION

- a.* Sup. Level of emerg sup indicated in current div ADMINO.
- b.* Evac and hospitalization. When med requirements are beyond cpbl of provisional med evac teams, requests for additional means direct to ADCSE.
- c.* Trans.
 - (1) Requests for additional transportation to spt rear area secty requirements will be made to movements elm, ADSOC.
 - (2) Changes in spt area movement and tfc control plans will be coord with movements elm, ADSOC.

(Classification)

(Classification)

d. CA. Max use will be made of civ pers including police and med pers, housing, trans, and other facilities.

e. Reestablishment of admin spt. Reestablishment of admin spt after an incident is resp of CO, spt comd. See Annex Area Damage Control.

6. COMMAND AND SIGNAL

a. En gnd or air atk will be rept immed through spt comd comd net (FM) to ADCSE. Atk by en air or nuclear wpn will be rept immed through dir warning net (AM). Div admin/log net (RATT) may be used in emergency.

b. Comd net for mbl scety force as designated in current SOI.

c. CP, primary, and altn assy areas for mbl scety force as shown in current div spt comd rear area defense OPORD.

GREEN
Col

Distribution:

Each unit spt comd;
gen staff (1); sig
bn, engr bn; OIC
div rear ech (2)

Official:

/s/White
WHITE
S3

(Classification)

APPENDIX III
AREA DAMAGE CONTROL SOP

(Classification)

52d Mech Div Spt Comd
Fort Leavenworth, Kansas
15 September 19 _____

Annex_____ (Area Damage Control) to SOP No._____

1. APPLICATION

a. The provisions of this anx will apply to all units and instls wi the div spt area unless otherwise specified by the div area damage control plan. This anx prescribes normal procedures for def against and actions fol en nuclear, chemical or biological attack or natural disaster.

b. See annex. (Actions To Minimize Effects of Enemy Nuclear, Chemical, and Biological Attack), 52d Mech Div SOP No, dtd 1 Sep 19_____.

c. Subor unit SOP will conform and will be coord with S4. Passive def measures will be habitually empl. Mutual assistance between units wi the div spt area in the conduct of area damage control will be limited only by the necessity to continue the admin spt msn. The area damage control and scty elm (ADCSE), ADSOC, will supv and coord the execution of area damage control plans.

2. GENERAL

a. Spt comd S4 is resp for supv and coord of the preparation of unit damage control plans. S4 will estb an ADCSE to be loc at the ADSOC. The msn of this elm is to direct control and assessment teams (CAT), lt or hv rescue teams, labor sqds, decon sqds, med teams, log spt, supplies, and med assistance to the disaster area.

3. RESPONSIBILITIES

a. Control and assessment team (CAT) : The spt comd will org and equip one ea CAT as follows:

(1) Org:

(a) Senior off—S1, spt comd.

(Classification)

(Classification)

- (b) Med rep—XO, med bn.
- (c) Sup rep—S1, sup and trans bn.
- (d) Engr rep—div engr sup off.
- (e) RADLMON team—HQ co and band.
- (f) Comm det—one driver, one radio op, HQ section, spt comd.
- (g) Scty det—one mbl scty det, HQ co and band.
- (h) Trans det—Gnd: 3 drivers, sup and trans bn; one driver, med bn.
Air: two pilots, helicopter, div avn bn.

(2) Equip:

- (a) One radio AN/VRQ-1.
- (b) Two 2½-ton trk, sup and trans bn.
- (c) One ¼-ton trk, HQ section, spt comd.
- (d) Radiation detection instrument, HQ co and band.
- (e) One ¼-ton trk, med bn.
- (f) One ¼-ton trk, sup and trans bn.
- (g) Two helicopter, utility, div avn bn.

- (3) Msn: On order move to damaged area; detect and rept no. and type of cas, effectiveness of damaged unit, loss of commander (or ldr), loc of CAT CP, all radiation areas over rad/hr and cml contamination discovered in course of op. If nec, assume con of damaged unit and restore comm to next higher HQ. Take action to resume units msn ASAP.

b. Lt rescue sqd: Each unit except the maint bn will org and equip one ea lt rescue sqd per co as fol:

(1) Org:

- (a) One NCO.
- (b) Six EM.

(2) Equip:

- (a) Two trk ¼-ton; or one trk, ¾-ton.
- (b) One pick.
- (c) Two shovels.
- (d) Two axes.
- (e) Two cutters, wire.

- (3) Msn: Lt rescue sqds will remove cas to assy areas and render first aid.

(Classification)

(Classification)

c. Hv rescue sqd: The maint bn and engr bn will each org and equip four hv rescue sqd as fol:

(1) Org:

- (a) One Off.
- (b) Two NCO.
- (c) Ten EM.

(2) Equip:

- (a) One trk, 2½-ton; one tlr, 1½-ton.
- (b) Two bars, pry.
- (c) One differential chain hoist, 1½-ton or 3-ton.
- (d) Two snatch blocks for 1 manila rope.
- (e) Two hacksaws.
- (f) Two cold chisels.
- (g) Manila rope, 1 in, 300 ft.
- (h) Two hydraulic jacks.
- (i) One acetylene welding and cutting equipment.
- (j) Two hooks, grappling.
- (k) Four road flares.
- (l) Four crowbars.
- (m) One cross-cut saw.
- (n) Two picks.
- (o) Five shovels.
- (p) Two sledges.
- (q) Two hatchets.
- (r) Portable generator with lights.
- (s) Four flashlights.
- (t) Four pr rubber gloves.
- (u) Two buckets.
- (v) Two cutters, wire.
- (w) One trk wrecker mdm, 5-ton, 6x6, won.
- (x) One bulldozer (enr bn, only).

(3) Msn: The hv rescue sqd will assist in the recovery and removal of cas and the salv of damaged material.

d. Labor sqd: The HQ co and band and the admin co will each org and equip one labor sqd as fol:

(1) Org:

- (a) One Off.
- (b) Two NCO.
- (c) Eighteen EM.

(Classification)

(Classification)

(2) Equip:

- (a) Two trk, 2½-ton.
- (b) Five picks.
- (c) Ten shovels.
- (d) Three axes.
- (e) Five litters, folding.

(3) Msn: The labor sqds will clear the debris and remove all usable sup; assist in search and rescue of cas, and tfc control.

e. Decon sqd: Each unit will org and equip one decon sqd each per co sized unit as fol:

(1) Org:

- (a) One NCO.
- (b) Nine EM.

(2) Equip:

- (a) Eight shovels.
- (b) Cml agent detection kit.
- (c) Brushes, scrubbing.
- (d) Two pr rubber gloves.
- (e) Two cans, corrugated, 16-32-gal.
- (f) Four ea DANC solution unit, 3-gal, M4.
- (g) Bandage scissors.
- (h) Ten each fld mask, with comp protection kit, M5A1.
- (i) Radiation detection instrument.
- (j) One rake.
- (k) Four brooms.
- (l) Rags, 20 lb.
- (m) Two buckets, 14 qt.
- (n) One axe.
- (o) One heater immersion type.
- (p) Four ea decon agent, STB, 50-lb can.
- (q) Soap, issue 5 lb.
- (r) Leather dressing, vesicant gas, resistant, M2, 10 cans.

(3) Msn: The decon sqds will assist in pers and equip RADLMON and decon op; prepare and post markers of dangerously contaminated areas or for those areas as directed by senior off, CAT.

f. Med team: The med bn will org and have aval two each med teams equipped as fol:

(Classification)

(Classification)

(1) Org:

- (a) One MC off.
- (b) Two med aid men.
- (c) Four litter bearers.
- (d) Two amb orderlies.
- (e) Two drivers, amb.

(2) Equip:

- (a) One 1/4-ton trk with AN/VRC-8.
- (b) Two amb, fld, 3/4-ton.
- (c) First aid equip.
- (d) Med equip and sup.

(3) Msn: The med team will establish a med "collecting station" on the fringe of the disaster area and render immed med assistance to pers.

g. Miscellaneous instructions: On order of ADCSE to move to a disaster area, off or NCO's in charge of lt rescue sqds, hv rescue sqds, labor sqd, decon sqds, or med teams will—

- (1) Rept to senior off, CAT, for instructions.
- (2) Request through senior off, CAT, additional assistance required.
- (3) Make all op repts and findings to senior off, CAT.

4. MEDICAL EVACUATION AND HOSPITAL

a. Mass evac of cas from disaster area to div clr station on auth this HQ only.

b. Affected units accomplish max self aid.

c. Requests for MAE direct to ADCSE.

d. Med bn resp for evac from disaster area to div clr station in div spt area.

5. SUPPLY

CAT sup rep rept status of sup of damaged unit to ADCSE.

6. TRANSPORTATION

a. Traffic control and reg.

(1) Only veh engaged in area damage con activities or tac op wi area will be permitted to enter and op in the damage area.

(2) Tfc will be controlled wi damage area by atch MP units or labor sqds as directed by senior off, CAT.

(Classification)

(Classification)

b. Trans requirements. Req for trans to spt dam con op will be submitted to mov elm, ADSOC through senior off, CAT.

7. PERSONNEL

a. The effect of diverting admin spt pers to damage control tasks, such as assigning them or members of the CAT or special assistance sqds, must be carefully weighted as the primary msn of the spt comd is to continue the admin spt msm.

b. All pers wi the div spt area will be provided protection and oriented on procedures to be fol in the event of nuclear or CB atk.

8. CIVIL AFFAIRS

a. Max use will be made of civ pers, sup, and fac to spt the area damage control op. Mil spt of civil def op will be prov only upon order this HQ.

b. CA units loc wi div spt area will prov ln between all mil HQ and civil authorities and will coord the empl of civ spt for the area damage control op. In absence of CA pers, the spt comd S3 will assume these functions.

9. RECORDS AND REPORTS

a. Periodic repts re aval of area damage control CAT's and other special damage control sqds will be made to this HQ attn ADCSE as fol:

(1) Nonactive cmbt—last day of month prior to 1800 hr.

(2) Active combt—Friday of each wk as of 2400 hr.

b. All units of instl moving toward div spt area rept ETA, actual time of arrival, and departure to mov elm, ADSOC.

c. All pers or special damage control sqds rept to senior off, CAT, upon arrival at disaster area.

10. SIGNAL COMMUNICATION

Current SOI and SSI in effect.

GREEN

Col

Distr: Div A (less corps and army)

Official:

/s/Grey

GREY

S4

(Classification)

INDEX

	Paragraph	Page
Administration company:		
Employment.....	27, 48	21, 36
General.....	2c, 3e,	3, 4,
	25	21
Organization.....	26	21
Administrative:		
Plans and orders.....	43b, c, 46b (1)	29, 33
Support operations center.....	11d, 24a (1),	11, 20,
	40, 43c (4),	28, 30,
	46, 52,	32, 38,
	65a	53
Aerial supply.....	69b	55
Aeromedical evacuation.....	76d	65
Air equipment support company:		
Employment.....	39	26
General.....	37	26
Organization.....	38	26
Airborne operations.....	80	69
Aircraft maintenance.....	74	63
Ammunition (See also Classes of supply):		
Officer, division.....	65a	53
Supply.....	65	53
Antiguerrilla operations.....	6c, 83,	8, 70,
	84	71
Area damage control:		
General.....	2d, 57	3, 42
Means.....	58	42
Measures.....	59	42
Area defense.....	15d (2), 50	14, 38
Armored cavalry squadron trains.....	2g	4
Artillery:		
Maintenance.....	71	58
Trains.....	19a	18
Atomic (See Nuclear.)		
Band (See Headquarters company and band, division support command.)		
Basic load.....	21b, 60c,	19, 44,
	65d	53
Bath facilities.....	10e, 77	11, 65
Battalion:		
Logistical elements.....	17	16
Logistical personnel.....	17	16
Logistical support operations.....	19	18
Trains:		
Capabilities.....	3f, 18	5, 18
Employment.....	19	18

	Paragraph	Page
Battalion—Continued		
Trains—Continued		
Mission.....	16	15
Organization.....	17	16
Battlefield recovery.....	14 <i>d</i> , 18 <i>e</i> , 34 <i>d</i> , 73	12, 18, 25, 60
Brigade trains:		
Capabilities.....	14	12
Employment.....	15	12
Mission.....	12	12
Organization.....	13	12
Captured materiel.....	79	67
Chemical:		
Maintenance (<i>See</i> maintenance.)		
Supply (<i>See</i> Supply.)		
Warfare.....	6	7
Classes of supply:		
Class I.....	61	44
II.....	62	46
III.....	63	50
IV.....	64	52
V.....	65	53
Maps.....	67	55
Water.....	66	55
Clearing stations.....	14 <i>c</i> , 28, 30, 75, 76	12, 22, 23, 63
Clothing exchange.....	77	65
Combat trains.....	7 <i>c</i> (1), 19, 21 <i>a</i> (1)	8, 18, 19
Communication:		
ADSOC.....	52	38
Officer, battalion.....	19 <i>a</i>	18
Support command.....	52	38
Company trains:		
Composition and employment.....	21	19
Mission.....	20	19
Contact teams.....	74	63
Defensive operations.....	50	38
Delaying action.....	15 <i>e</i> (2), 51	15, 38
Dental service.....	28	22
Division:		
Ammunition officer.....	65 <i>a</i>	53
Support area.....	44	30
Support command:		
Capabilities.....	10	10
Command post.....	45	30
Employment.....	11	11
Mission.....	8	10
Organization.....	9	10
Units in brigade areas.....	47	35

	Paragraph	Page
Engineer:		
ADSOC representation-----	46a	32
Maintenance (<i>See</i> maintenance)		
Supply (<i>See</i> supply.)		
Water supply-----	66	55
Evacuation:		
Medical (<i>See</i> Medical.)		
Vehicles (<i>See</i> maintenance.)		
Field:		
Maintenance-----	2b (3), 34a, 71-74	3, 25, 58
Trains:		
Battalion-----	19	18
Company-----	21	19
General-----	7c (2)	10
Forward support company-----	36, 71	25, 58
Fuel and lubricants (<i>See</i> Classes of supply.)		
G4 (<i>See</i> Logistics staff officer.)		
General staff coordination-----	43, 46	29, 32
Graves registration-----	31, 78	23, 65
Headquarters company and band, division support command:		
Employment-----	24	20
General-----	22	20
Organization-----	23	20
Headquarters and main support company-----	36, 71	25, 58
Headquarters, division rear echelon-----	48	36
Hospitalization (<i>See</i> Medical.)		
Inspections, maintenance-----	71	58
Logistics:		
Battalion elements-----	17	16
Company elements-----	21	19
Operations in chemical, biological and nuclear warfare	6	7
Planning-----	5, 66, 43	6, 55, 29
Responsibilities of commander-----	4	6
Reports-----	15b (5)	14
Staff officer-----	5, 42, 43	6, 29
Maintenance:		
Aircraft, Army-----	36, 74	25, 63
Battalion:		
Employment-----	36	25
General-----	34	24
Organization-----	35	25
Evacuation-----	73	60
Inspections-----	71	58
Medical-----	28	22
Organizational-----	17b, 17c, 18a, 28c, 71, 74	16, 17, 18, 22, 58, 63
Recovery-----	73	60

	PARAGRAPH	PAGE
Maintenance—Continued		
Repair parts supply	72	58
Responsibility	19a, 41b	18, 28
Medical:		
Battalion:		
Employment	30	23
General	28	22
Organization	29	22
Maintenance	28c	22
Service	75, 76	63
Supply	62	46
Mobile defense	15d (1), 50	14, 38
Nuclear:		
Minimize effects of	66	55
Munitions	65e	55
Operations	2e, 6	4, 7
Supply	65e	55
Offensive operations	49	37
Operations against irregular forces	83, 84	70, 71
Orders, administrative	43b, 46b (1)	29, 33
Ordnance:		
Maintenance (<i>See</i> Maintenance.)		
Supply (<i>See</i> Supply.)		
Organization for combat	7	8
Organizational maintenance	17c, 18a, 28c, 71, 74	17, 18, 22, 58, 63
Perimeter defense	50a	38
Quartermaster:		
Maintenance (<i>See</i> Maintenance.)		
Supply (<i>See</i> supply.)		
Rear area security:		
General	53	40
Forces	54	40
Measures	56	41
Scope	55	41
Rear echelon, division	48	36
References	app. I	72
Repair parts supply	72	58
Reports, logistical	15b (5)	14
Responsibilities:		
Aerial supply	69b	55
Battalion logistical personnel	17	16
Commander, general	4	6
Division logistical personnel	5	6
Division support command commander	41	28
Logistics staff officer (G4/S4)	5, 42, 43	6, 29
Maintenance	19a, 41b	18, 28
Retrograde operations	15e, 51	15, 38

	Paragraph	Page
S4 (<i>See</i> logistics staff officer.)		
Salvage-----	14d, 73	12, 60
Security:		
Administration support operation center-----	46d	35
Division support command units-----	44d, 45d,	30, 32,
	47c	36
Rear area-----	48	36
Service, medical-----	75, 76	63
Signal:		
Maintenance (<i>See</i> Maintenance.)		
Service-----	52	48
Supply (<i>See</i> Supply.)		
Situation short of war-----	81, 82	69
Staff:		
Advice-----	5, 42	6, 29
Responsibilities, support command-----	10f, 43	11, 29
Standing operating procedures (SOP):		
Area damage control-----	app. II	76
Rear area security-----	app. III	81
Supply:		
Administrative support operations center-----	46b	33
Distribution:		
Class I-----	61	44
II-----	62	46
III-----	63	50
IV-----	64	52
V-----	65	53
Map-----	57	55
Water-----	66	55
Economy-----	4d	6
General-----	60	44
Medical-----	62	46
Repair parts-----	72	58
Salvage-----	73	60
Supply and transport battalion:		
Employment-----	33	23
General-----	31	23
Organization-----	32	23
Support command (<i>See</i> Division support command.)		
Support command commander-----	3d, 41	4, 28
Support command operations platoon-----	52	38
Support platoon leader-----	17b	16
Surgeon, battalion-----	17d	17
Technical service:		
Intelligence teams-----	79	67
Staff advice-----	10f, 42	11, 29
Trains logistical:		
Armored cavalry squadron-----	2c	3
Battalion-----	16-19	15
Brigade-----	12-15	12
Company-----	20-21	19
General-----	7c	8

	Paragraph	Page
Transportation:		
Allocation and control-----	70	58
Company-----	31-33	23
General-----	68	55
Means-----	69	55
Supply (<i>See supply.</i>)		
Water supply-----	66	55
Withdrawal-----	15e, 51	15, 38

BY ORDER OF THE SECRETARY OF THE ARMY:

G. H. DECKER,
General, United States Army,
Chief of Staff.

Official:

J. C. LAMBERT,
Major General, United States Army,
The Adjutant General.

Distribution:

Active Army:

SA (1)	PMS Mil Sch Div Units (1)
CofS (1)	Corps (15)
DCSPER (5)	Div Bde (3)
DCSLOG (10)	Div Bn & Sqdn (2)
DCSOPS (20)	Div Co, Trp & Btry (2)
ACSI (5)	ADA Btry (1)
ACSRC (5)	USAWC (5)
CARROTC (5)	USACGSC (6500)
USASA (2)	TAGSUSA (300)
DASA (2)	USARADSCH (50)
CoA (2)	USAAVNS (11)
Tech Stf, DA (5)	USAARMS (900)
CofF (2)	USAAMS (900)
CINFO (2)	USACMLCSCH (25)
CNGB (2)	USAES (60)
CLL (2)	USAIS (1065)
CRD (2)	USAINTS (220)
CMH (2)	AMSS (700)
CA (2)	USA Ord Sch (1125)
TIG (2)	PMGS (130)
TJAG (2)	USAQMS (10)
TPMG (2)	USASCS (265)
TAG (2)	USATSCH (265)
CofCh (2)	USASA Sch (50)
USABELCTBD (2)	USACAS (500)
USAATBD (2)	USAWS (25)
ARADCOM (2)	Jt Sch (5)
ARADCOM Rgn (2)	Div Spt Comd (10)
MDW (3)	LOGCOMD (2)
Seventh US Army (10)	Div Arty (3)
EUSA (10)	MAAG (5)
USMA (5)	Mil Msn (5)
PMS SR Div Units (1)	CDEC (5)

NG: State AG (3); Corps Arty (2); Div Arty (2); TOE 17-62 (2).

USAR: Same as Active Army except allowance is 2 copies to each unit.

For explanation of abbreviations used, see AR 320-50.